

2.2

Calculating Limits Using the Limit Laws

HISTORICAL ESSAY*

Limits



In Section 2.1 we used graphs and calculators to guess the values of limits. This section presents theorems for calculating limits. The first three let us build on the results of Example 8 in the preceding section to find limits of polynomials, rational functions, and powers. The fourth and fifth prepare for calculations later in the text.

The Limit Laws

The next theorem tells how to calculate limits of functions that are arithmetic combinations of functions whose limits we already know.

THEOREM 1 Limit Laws

If L , M , c and k are real numbers and

$$\lim_{x \rightarrow c} f(x) = L \quad \text{and} \quad \lim_{x \rightarrow c} g(x) = M, \quad \text{then}$$

1. *Sum Rule:* $\lim_{x \rightarrow c} (f(x) + g(x)) = L + M$

The limit of the sum of two functions is the sum of their limits.

2. *Difference Rule:* $\lim_{x \rightarrow c} (f(x) - g(x)) = L - M$

The limit of the difference of two functions is the difference of their limits.

3. *Product Rule:* $\lim_{x \rightarrow c} (f(x) \cdot g(x)) = L \cdot M$

The limit of a product of two functions is the product of their limits.

To learn more about the historical figures and the development of the major elements and topics of calculus, visit www.aw-bc.com/thomas.

4. *Constant Multiple Rule:* $\lim_{x \rightarrow c} (k \cdot f(x)) = k \cdot L$

The limit of a constant times a function is the constant times the limit of the function.

5. *Quotient Rule:* $\lim_{x \rightarrow c} \frac{f(x)}{g(x)} = \frac{L}{M}, \quad M \neq 0$

The limit of a quotient of two functions is the quotient of their limits, provided the limit of the denominator is not zero.

6. *Power Rule:* If r and s are integers with no common factor and $s \neq 0$, then

$$\lim_{x \rightarrow c} (f(x))^{r/s} = L^{r/s}$$

provided that $L^{r/s}$ is a real number. (If s is even, we assume that $L > 0$.)

The limit of a rational power of a function is that power of the limit of the function, provided the latter is a real number.

It is easy to convince ourselves that the properties in Theorem 1 are true (although these intuitive arguments do not constitute proofs). If x is sufficiently close to c , then $f(x)$ is close to L and $g(x)$ is close to M , from our informal definition of a limit. It is then reasonable that $f(x) + g(x)$ is close to $L + M$; $f(x) - g(x)$ is close to $L - M$; $f(x)g(x)$ is close to LM ; $kf(x)$ is close to kL ; and that $f(x)/g(x)$ is close to L/M if M is not zero. We prove the Sum Rule in Section 2.3, based on a precise definition of limit. Rules 2–5 are proved in Appendix 2. Rule 6 is proved in more advanced texts.

Here are some examples of how Theorem 1 can be used to find limits of polynomial and rational functions.



EXAMPLE 1 Using the Limit Laws

Use the observations $\lim_{x \rightarrow c} k = k$ and $\lim_{x \rightarrow c} x = c$ (Example 8 in Section 2.1) and the properties of limits to find the following limits.

(a) $\lim_{x \rightarrow c} (x^3 + 4x^2 - 3)$ (b) $\lim_{x \rightarrow c} \frac{x^4 + x^2 - 1}{x^2 + 5}$ (c) $\lim_{x \rightarrow -2} \sqrt{4x^2 - 3}$

Solution

(a) $\lim_{x \rightarrow c} (x^3 + 4x^2 - 3) = \lim_{x \rightarrow c} x^3 + \lim_{x \rightarrow c} 4x^2 - \lim_{x \rightarrow c} 3$ Sum and Difference Rules
 $= c^3 + 4c^2 - 3$ Product and Multiple Rules

(b) $\lim_{x \rightarrow c} \frac{x^4 + x^2 - 1}{x^2 + 5} = \frac{\lim_{x \rightarrow c} (x^4 + x^2 - 1)}{\lim_{x \rightarrow c} (x^2 + 5)}$ Quotient Rule
 $= \frac{\lim_{x \rightarrow c} x^4 + \lim_{x \rightarrow c} x^2 - \lim_{x \rightarrow c} 1}{\lim_{x \rightarrow c} x^2 + \lim_{x \rightarrow c} 5}$ Sum and Difference Rules
 $= \frac{c^4 + c^2 - 1}{c^2 + 5}$ Power or Product Rule

$$\begin{aligned}
 \text{(c)} \quad \lim_{x \rightarrow -2} \sqrt{4x^2 - 3} &= \sqrt{\lim_{x \rightarrow -2} (4x^2 - 3)} && \text{Power Rule with } r/s = 1/2 \\
 &= \sqrt{\lim_{x \rightarrow -2} 4x^2 - \lim_{x \rightarrow -2} 3} && \text{Difference Rule} \\
 &= \sqrt{4(-2)^2 - 3} && \text{Product and Multiple Rules} \\
 &= \sqrt{16 - 3} \\
 &= \sqrt{13}
 \end{aligned}$$

Two consequences of Theorem 1 further simplify the task of calculating limits of polynomials and rational functions. To evaluate the limit of a polynomial function as x approaches c , merely substitute c for x in the formula for the function. To evaluate the limit of a rational function as x approaches a point c at which the denominator is not zero, substitute c for x in the formula for the function. (See Examples 1a and 1b.)

THEOREM 2 Limits of Polynomials Can Be Found by Substitution

If $P(x) = a_n x^n + a_{n-1} x^{n-1} + \cdots + a_0$, then

$$\lim_{x \rightarrow c} P(x) = P(c) = a_n c^n + a_{n-1} c^{n-1} + \cdots + a_0.$$

THEOREM 3 Limits of Rational Functions Can Be Found by Substitution If the Limit of the Denominator Is Not Zero

If $P(x)$ and $Q(x)$ are polynomials and $Q(c) \neq 0$, then

$$\lim_{x \rightarrow c} \frac{P(x)}{Q(x)} = \frac{P(c)}{Q(c)}.$$



EXAMPLE 2 Limit of a Rational Function

$$\lim_{x \rightarrow -1} \frac{x^3 + 4x^2 - 3}{x^2 + 5} = \frac{(-1)^3 + 4(-1)^2 - 3}{(-1)^2 + 5} = \frac{0}{6} = 0$$

This result is similar to the second limit in Example 1 with $c = -1$, now done in one step. ■

Identifying Common Factors

It can be shown that if $Q(x)$ is a polynomial and $Q(c) = 0$, then $(x - c)$ is a factor of $Q(x)$. Thus, if the numerator and denominator of a rational function of x are both zero at $x = c$, they have $(x - c)$ as a common factor.



Eliminating Zero Denominators Algebraically

Theorem 3 applies only if the denominator of the rational function is not zero at the limit point c . If the denominator is zero, canceling common factors in the numerator and denominator may reduce the fraction to one whose denominator is no longer zero at c . If this happens, we can find the limit by substitution in the simplified fraction.

EXAMPLE 3 Canceling a Common Factor

Evaluate

$$\lim_{x \rightarrow 1} \frac{x^2 + x - 2}{x^2 - x}.$$



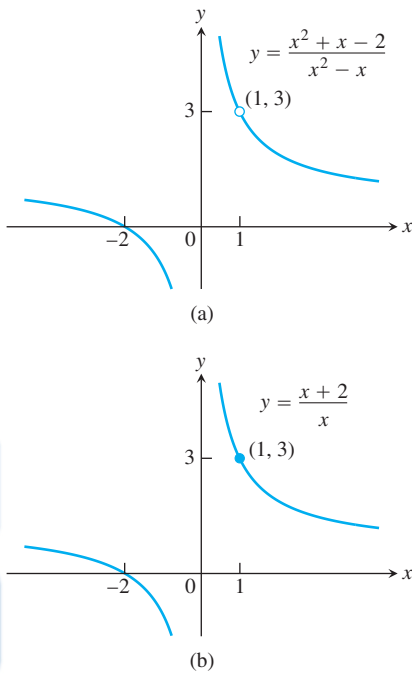


FIGURE 2.8 The graph of $f(x) = (x^2 + x - 2)/(x^2 - x)$ in part (a) is the same as the graph of $g(x) = (x + 2)/x$ in part (b) except at $x = 1$, where f is undefined. The functions have the same limit as $x \rightarrow 1$ (Example 3).

Solution We cannot substitute $x = 1$ because it makes the denominator zero. We test the numerator to see if it, too, is zero at $x = 1$. It is, so it has a factor of $(x - 1)$ in common with the denominator. Canceling the $(x - 1)$'s gives a simpler fraction with the same values as the original for $x \neq 1$:

$$\frac{x^2 + x - 2}{x^2 - x} = \frac{(x - 1)(x + 2)}{x(x - 1)} = \frac{x + 2}{x}, \quad \text{if } x \neq 1.$$

Using the simpler fraction, we find the limit of these values as $x \rightarrow 1$ by substitution:

$$\lim_{x \rightarrow 1} \frac{x^2 + x - 2}{x^2 - x} = \lim_{x \rightarrow 1} \frac{x + 2}{x} = \frac{1 + 2}{1} = 3.$$

See Figure 2.8.

EXAMPLE 4 Creating and Canceling a Common Factor

Evaluate

$$\lim_{x \rightarrow 0} \frac{\sqrt{x^2 + 100} - 10}{x^2}.$$

Solution This is the limit we considered in Example 10 of the preceding section. We cannot substitute $x = 0$, and the numerator and denominator have no obvious common factors. We can create a common factor by multiplying both numerator and denominator by the expression $\sqrt{x^2 + 100} + 10$ (obtained by changing the sign after the square root). The preliminary algebra rationalizes the numerator:

$$\begin{aligned} \frac{\sqrt{x^2 + 100} - 10}{x^2} &= \frac{\sqrt{x^2 + 100} - 10}{x^2} \cdot \frac{\sqrt{x^2 + 100} + 10}{\sqrt{x^2 + 100} + 10} \\ &= \frac{x^2 + 100 - 100}{x^2(\sqrt{x^2 + 100} + 10)} \\ &= \frac{x^2}{x^2(\sqrt{x^2 + 100} + 10)} && \text{Common factor } x^2 \\ &= \frac{1}{\sqrt{x^2 + 100} + 10}. && \text{Cancel } x^2 \text{ for } x \neq 0 \end{aligned}$$

Therefore,

$$\begin{aligned} \lim_{x \rightarrow 0} \frac{\sqrt{x^2 + 100} - 10}{x^2} &= \lim_{x \rightarrow 0} \frac{1}{\sqrt{x^2 + 100} + 10} \\ &= \frac{1}{\sqrt{0^2 + 100} + 10} && \text{Denominator not 0 at } x = 0; \text{ substitute} \\ &= \frac{1}{20} = 0.05. \end{aligned}$$

This calculation provides the correct answer to the ambiguous computer results in Example 10 of the preceding section.

The Sandwich Theorem

The following theorem will enable us to calculate a variety of limits in subsequent chapters. It is called the Sandwich Theorem because it refers to a function f whose values are



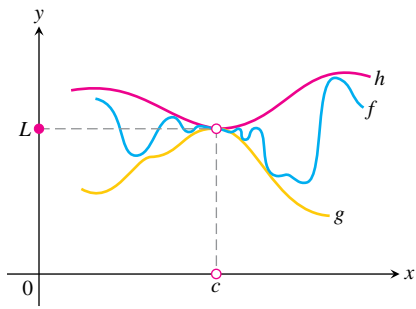


FIGURE 2.9 The graph of f is sandwiched between the graphs of g and h .

sandwiched between the values of two other functions g and h that have the same limit L at a point c . Being trapped between the values of two functions that approach L , the values of f must also approach L (Figure 2.9). You will find a proof in Appendix 2.

THEOREM 4 The Sandwich Theorem

Suppose that $g(x) \leq f(x) \leq h(x)$ for all x in some open interval containing c , except possibly at $x = c$ itself. Suppose also that

$$\lim_{x \rightarrow c} g(x) = \lim_{x \rightarrow c} h(x) = L.$$

Then $\lim_{x \rightarrow c} f(x) = L$.

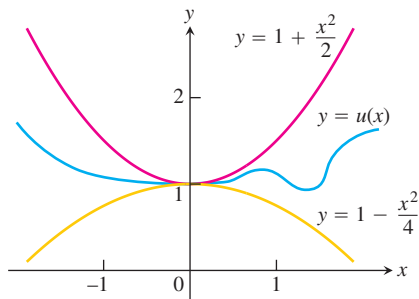


FIGURE 2.10 Any function $u(x)$ whose graph lies in the region between $y = 1 + (x^2/2)$ and $y = 1 - (x^2/4)$ has limit 1 as $x \rightarrow 0$ (Example 5).

The Sandwich Theorem is sometimes called the Squeeze Theorem or the Pinching Theorem.

EXAMPLE 5 Applying the Sandwich Theorem

Given that

$$1 - \frac{x^2}{4} \leq u(x) \leq 1 + \frac{x^2}{2} \quad \text{for all } x \neq 0,$$

find $\lim_{x \rightarrow 0} u(x)$, no matter how complicated u is.

Solution Since

$$\lim_{x \rightarrow 0} (1 - (x^2/4)) = 1 \quad \text{and} \quad \lim_{x \rightarrow 0} (1 + (x^2/2)) = 1,$$

the Sandwich Theorem implies that $\lim_{x \rightarrow 0} u(x) = 1$ (Figure 2.10). ■



EXAMPLE 6 More Applications of the Sandwich Theorem

(a) (Figure 2.11a). It follows from the definition of $\sin \theta$ that $-|\theta| \leq \sin \theta \leq |\theta|$ for all θ , and since $\lim_{\theta \rightarrow 0} (-|\theta|) = \lim_{\theta \rightarrow 0} |\theta| = 0$, we have

$$\lim_{\theta \rightarrow 0} \sin \theta = 0.$$

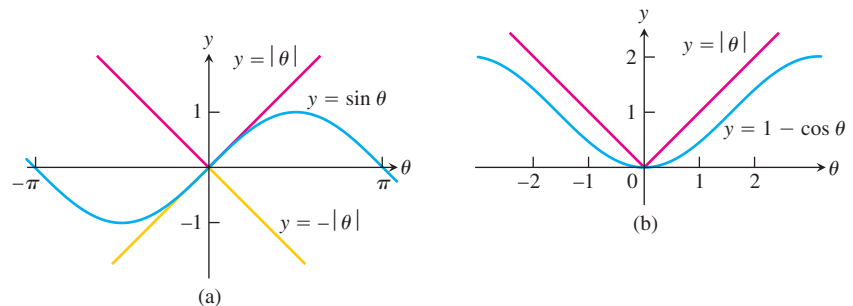


FIGURE 2.11 The Sandwich Theorem confirms that (a) $\lim_{\theta \rightarrow 0} \sin \theta = 0$ and (b) $\lim_{\theta \rightarrow 0} (1 - \cos \theta) = 0$ (Example 6).

- (b) (Figure 2.11b). From the definition of $\cos \theta$, $0 \leq 1 - \cos \theta \leq |\theta|$ for all θ , and we have $\lim_{\theta \rightarrow 0} (1 - \cos \theta) = 0$ or

$$\lim_{\theta \rightarrow 0} \cos \theta = 1.$$

- (c) For any function $f(x)$, if $\lim_{x \rightarrow c} |f(x)| = 0$, then $\lim_{x \rightarrow c} f(x) = 0$. The argument: $-|f(x)| \leq f(x) \leq |f(x)|$ and $-|f(x)|$ and $|f(x)|$ have limit 0 as $x \rightarrow c$. ■

Another important property of limits is given by the next theorem. A proof is given in the next section.

THEOREM 5 If $f(x) \leq g(x)$ for all x in some open interval containing c , except possibly at $x = c$ itself, and the limits of f and g both exist as x approaches c , then

$$\lim_{x \rightarrow c} f(x) \leq \lim_{x \rightarrow c} g(x).$$

The assertion resulting from replacing the less than or equal to \leq inequality by the strict $<$ inequality in Theorem 5 is false. Figure 2.11a shows that for $\theta \neq 0$, $-|\theta| < \sin \theta < |\theta|$, but in the limit as $\theta \rightarrow 0$, equality holds.

EXERCISES 2.2

Limit Calculations

Find the limits in Exercises 1–18.

1. $\lim_{x \rightarrow -7} (2x + 5)$
2. $\lim_{x \rightarrow 12} (10 - 3x)$
3. $\lim_{x \rightarrow 2} (-x^2 + 5x - 2)$
4. $\lim_{x \rightarrow -2} (x^3 - 2x^2 + 4x + 8)$
5. $\lim_{t \rightarrow 6} 8(t - 5)(t - 7)$
6. $\lim_{s \rightarrow 2/3} 3s(2s - 1)$
7. $\lim_{x \rightarrow 2} \frac{x + 3}{x + 6}$
8. $\lim_{x \rightarrow 5} \frac{4}{x - 7}$
9. $\lim_{y \rightarrow -5} \frac{y^2}{5 - y}$
10. $\lim_{y \rightarrow 2} \frac{y + 2}{y^2 + 5y + 6}$
11. $\lim_{x \rightarrow -1} 3(2x - 1)^2$
12. $\lim_{x \rightarrow -4} (x + 3)^{1984}$
13. $\lim_{y \rightarrow -3} (5 - y)^{4/3}$
14. $\lim_{z \rightarrow 0} (2z - 8)^{1/3}$
15. $\lim_{h \rightarrow 0} \frac{3}{\sqrt{3h + 1} + 1}$
16. $\lim_{h \rightarrow 0} \frac{5}{\sqrt{5h + 4} + 2}$
17. $\lim_{h \rightarrow 0} \frac{\sqrt{3h + 1} - 1}{h}$
18. $\lim_{h \rightarrow 0} \frac{\sqrt{5h + 4} - 2}{h}$

Just Odd

Find the limits in Exercises 19–36.

19. $\lim_{x \rightarrow 5} \frac{x - 5}{x^2 - 25}$
20. $\lim_{x \rightarrow -3} \frac{x + 3}{x^2 + 4x + 3}$
21. $\lim_{x \rightarrow -5} \frac{x^2 + 3x - 10}{x + 5}$
22. $\lim_{x \rightarrow 2} \frac{x^2 - 7x + 10}{x - 2}$
23. $\lim_{t \rightarrow 1} \frac{t^2 + t - 2}{t^2 - 1}$
24. $\lim_{t \rightarrow -1} \frac{t^2 + 3t + 2}{t^2 - t - 2}$
25. $\lim_{x \rightarrow -2} \frac{-2x - 4}{x^3 + 2x^2}$
26. $\lim_{y \rightarrow 0} \frac{5y^3 + 8y^2}{3y^4 - 16y^2}$
27. $\lim_{u \rightarrow 1} \frac{u^4 - 1}{u^3 - 1}$
28. $\lim_{v \rightarrow 2} \frac{v^3 - 8}{v^4 - 16}$
29. $\lim_{x \rightarrow 9} \frac{\sqrt{x} - 3}{x - 9}$
30. $\lim_{x \rightarrow 4} \frac{4x - x^2}{2 - \sqrt{x}}$
31. $\lim_{x \rightarrow 1} \frac{x - 1}{\sqrt{x + 3} - 2}$
32. $\lim_{x \rightarrow -1} \frac{\sqrt{x^2 + 8} - 3}{x + 1}$
33. $\lim_{x \rightarrow 2} \frac{\sqrt{x^2 + 12} - 4}{x - 2}$
34. $\lim_{x \rightarrow -2} \frac{x + 2}{\sqrt{x^2 + 5} - 3}$





35. $\lim_{x \rightarrow -3} \frac{2 - \sqrt{x^2 - 5}}{x + 3}$ 36. $\lim_{x \rightarrow 4} \frac{4 - x}{5 - \sqrt{x^2 + 9}}$

Using Limit Rules



37. Suppose $\lim_{x \rightarrow 0} f(x) = 1$ and $\lim_{x \rightarrow 0} g(x) = -5$. Name the rules in Theorem 1 that are used to accomplish steps (a), (b), and (c) of the following calculation.

$$\begin{aligned} \lim_{x \rightarrow 0} \frac{2f(x) - g(x)}{(f(x) + 7)^{2/3}} &= \frac{\lim_{x \rightarrow 0} (2f(x) - g(x))}{\lim_{x \rightarrow 0} (f(x) + 7)^{2/3}} & (a) \\ &= \frac{\lim_{x \rightarrow 0} 2f(x) - \lim_{x \rightarrow 0} g(x)}{\left(\lim_{x \rightarrow 0} (f(x) + 7)\right)^{2/3}} & (b) \\ &= \frac{2 \lim_{x \rightarrow 0} f(x) - \lim_{x \rightarrow 0} g(x)}{\left(\lim_{x \rightarrow 0} f(x) + \lim_{x \rightarrow 0} 7\right)^{2/3}} & (c) \\ &= \frac{(2)(1) - (-5)}{(1 + 7)^{2/3}} = \frac{7}{4} \end{aligned}$$

38. Let $\lim_{x \rightarrow 1} h(x) = 5$, $\lim_{x \rightarrow 1} p(x) = 1$, and $\lim_{x \rightarrow 1} r(x) = 2$. Name the rules in Theorem 1 that are used to accomplish steps (a), (b), and (c) of the following calculation.

$$\begin{aligned} \lim_{x \rightarrow 1} \frac{\sqrt{5h(x)}}{p(x)(4 - r(x))} &= \frac{\lim_{x \rightarrow 1} \sqrt{5h(x)}}{\lim_{x \rightarrow 1} (p(x)(4 - r(x)))} & (a) \\ &= \frac{\sqrt{\lim_{x \rightarrow 1} 5h(x)}}{\left(\lim_{x \rightarrow 1} p(x)\right)\left(\lim_{x \rightarrow 1} (4 - r(x))\right)} & (b) \\ &= \frac{\sqrt{5 \lim_{x \rightarrow 1} h(x)}}{\left(\lim_{x \rightarrow 1} p(x)\right)\left(\lim_{x \rightarrow 1} 4 - \lim_{x \rightarrow 1} r(x)\right)} & (c) \\ &= \frac{\sqrt{(5)(5)}}{(1)(4 - 2)} = \frac{5}{2} \end{aligned}$$

39. Suppose $\lim_{x \rightarrow c} f(x) = 5$ and $\lim_{x \rightarrow c} g(x) = -2$. Find

a. $\lim_{x \rightarrow c} f(x)g(x)$ b. $\lim_{x \rightarrow c} 2f(x)g(x)$
 c. $\lim_{x \rightarrow c} (f(x) + 3g(x))$ d. $\lim_{x \rightarrow c} \frac{f(x)}{f(x) - g(x)}$

40. Suppose $\lim_{x \rightarrow 4} f(x) = 0$ and $\lim_{x \rightarrow 4} g(x) = -3$. Find

a. $\lim_{x \rightarrow 4} (g(x) + 3)$ b. $\lim_{x \rightarrow 4} xf(x)$
 c. $\lim_{x \rightarrow 4} (g(x))^2$ d. $\lim_{x \rightarrow 4} \frac{g(x)}{f(x) - 1}$

41. Suppose $\lim_{x \rightarrow b} f(x) = 7$ and $\lim_{x \rightarrow b} g(x) = -3$. Find

a. $\lim_{x \rightarrow b} (f(x) + g(x))$ b. $\lim_{x \rightarrow b} f(x) \cdot g(x)$
 c. $\lim_{x \rightarrow b} 4g(x)$ d. $\lim_{x \rightarrow b} f(x)/g(x)$

42. Suppose that $\lim_{x \rightarrow -2} p(x) = 4$, $\lim_{x \rightarrow -2} r(x) = 0$, and $\lim_{x \rightarrow -2} s(x) = -3$. Find

a. $\lim_{x \rightarrow -2} (p(x) + r(x) + s(x))$
 b. $\lim_{x \rightarrow -2} p(x) \cdot r(x) \cdot s(x)$
 c. $\lim_{x \rightarrow -2} (-4p(x) + 5r(x))/s(x)$

Limits of Average Rates of Change

Because of their connection with secant lines, tangents, and instantaneous rates, limits of the form

$$\lim_{h \rightarrow 0} \frac{f(x+h) - f(x)}{h}$$

occur frequently in calculus. In Exercises 43–48, evaluate this limit for the given value of x and function f .

43. $f(x) = x^2$, $x = 1$ 44. $f(x) = x^2$, $x = -2$
 45. $f(x) = 3x - 4$, $x = 2$ 46. $f(x) = 1/x$, $x = -2$
 47. $f(x) = \sqrt{x}$, $x = 7$ 48. $f(x) = \sqrt{3x + 1}$, $x = 0$



Using the Sandwich Theorem

49. If $\sqrt{5 - 2x^2} \leq f(x) \leq \sqrt{5 - x^2}$ for $-1 \leq x \leq 1$, find $\lim_{x \rightarrow 0} f(x)$.

50. If $2 - x^2 \leq g(x) \leq 2 \cos x$ for all x , find $\lim_{x \rightarrow 0} g(x)$.

51. a. It can be shown that the inequalities

$$1 - \frac{x^2}{6} < \frac{x \sin x}{2 - 2 \cos x} < 1$$

hold for all values of x close to zero. What, if anything, does this tell you about

$$\lim_{x \rightarrow 0} \frac{x \sin x}{2 - 2 \cos x}?$$

Give reasons for your answer.

T b. Graph

$y = 1 - (x^2/6)$, $y = (x \sin x)/(2 - 2 \cos x)$, and $y = 1$ together for $-2 \leq x \leq 2$. Comment on the behavior of the graphs as $x \rightarrow 0$.

52. a. Suppose that the inequalities

$$\frac{1}{2} - \frac{x^2}{24} < \frac{1 - \cos x}{x^2} < \frac{1}{2}$$

hold for values of x close to zero. (They do, as you will see in Section 11.9.) What, if anything, does this tell you about

$$\lim_{x \rightarrow 0} \frac{1 - \cos x}{x^2}?$$

Give reasons for your answer.

b. Graph the equations $y = (1/2) - (x^2/24)$, $y = (1 - \cos x)/x^2$, and $y = 1/2$ together for $-2 \leq x \leq 2$. Comment on the behavior of the graphs as $x \rightarrow 0$.