

A young girl with braided hair, wearing a dark jacket, is smiling and looking towards a young boy with blonde hair, who is also smiling and looking back at her. They are standing on a city sidewalk. In the background, there is a tree with yellow leaves, a building, and a parked car. The scene is set in an urban environment during autumn.

# Types of Social Interaction



Cooperation refers to collaborative efforts between people to achieve a common goal.



**Conflict - significant in social life. It involves direct struggle between individuals or groups over commonly valued resources or goals.**



Competition it is a form of conflict in which there is agreement on the means that can be used to pursue an end.



Negotiation at times, people may negotiate the term under which they agree to social exchange, social cooperation, or competition.



## Coercion

- coercion appears to be one sided, one imposing an action or behavior on another.



# Elements of Social Interaction



## 1. Statuses

- the term "status" means "prestige".
- refers particularly to a position in social structure; any position that determines where a





According to Macionis(2004)  
status is the most important  
comoponent of social interaction.



## 1. Ascribed Status

- the social position that is received at birth or involuntarily assumed later in the life course.



## 2. Achieved Status

-refers to a social position that is assumed voluntarily and that reflects a significant measure of personal ability and efforts



### 3. Roles

-refers to patterns of expected behavior attached to a particular status.



-refers to the collection of cultural defined rights, obligations, and expectations that accompany a status in the social system.



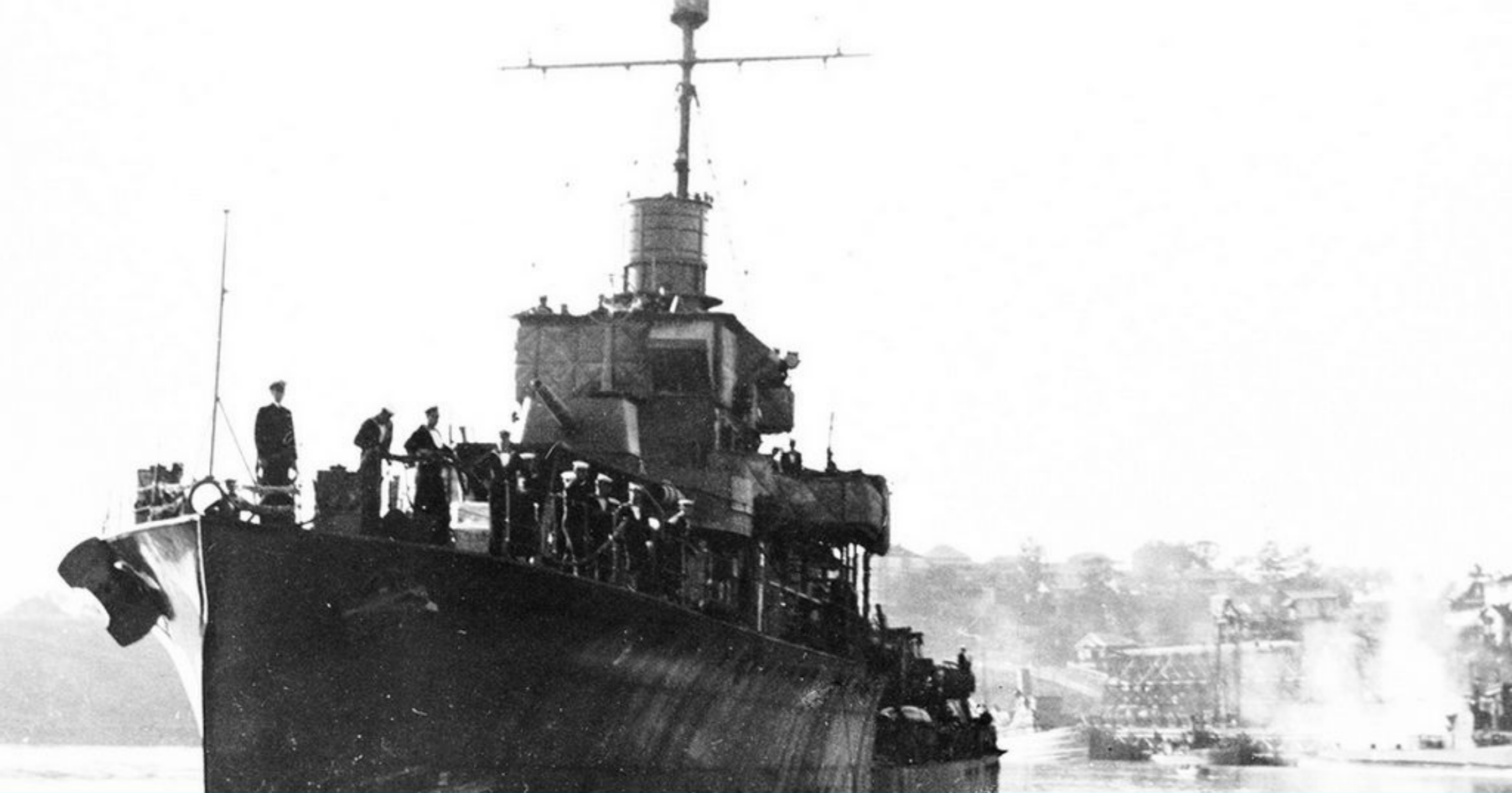
## Socialization

- people learn how to play their roles by observing and interacting with other people who are more experienced than themselves



## Role expectations

-it is the cultural norms that suggest how a person with a particular status ought act.



## Role strain

-refers to incompatibility among the roles corresponding to a single status.





## Role conflict

-occurs when the carrying out of one role automatically results in the violation of another.



UNPLUGGED

## Role exit

-the process by which people disengage from social roles that been central to their lives.



## Role ambiguity

-unclear expectations associated with particular social positions

THANK YOU



**Inspired?**

Create your own Haiku Deck presentation on SlideShare!

**GET STARTED**

