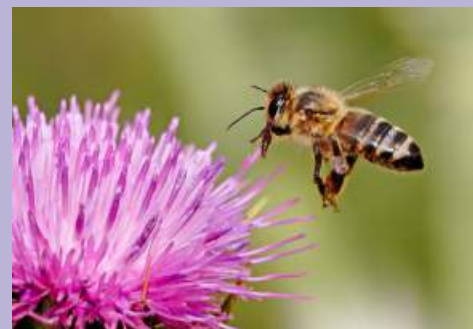




# *Orient Bee Supplies*

What Beekeepers need

# 2013



[www.orientbee.com](http://www.orientbee.com)



Orient Bee Supplies is only and one joint venture factory in China which can manufacture most of beekeeping equipment.

Orient Bee Supplies was established in 2002, In our factory which is located in Guangzhou, China. We tried our best all the time to learn all details about bee equipment in order to manufacture high quality products to the market.

We have wide-range items and a large scale productive capability combined with wooden ware , stainless steel series and protective clothes, with accumulating a lot of experience, we have ability to meet all customers' requirements, and our comprehensive sales service guarantees a promising backup for our products sold in the market.

The ultimate goal of us is to strengthen the business of our customers, who are the keys to make us stronger.

You are welcome to visit our factory in China,  
all contact information as below:

**Company Name: Orient Bee Supplies**

**Tel-Fax: +-86 (0)20 32031945**

**Mobile: 86-13825053836**

**Email: info@orientbee.com**

CEO  
Mr. Nedal AlRifae



*Orient Bee Supplies*

**1**

# Hives

## Accessories.



**WH-040**



**WH-041**



**WH-047**



**WH-046**

- **Cat. No: WH-040** 8ways Bee Escape (*Plastic*).
- **Cat. No: WH-041** Porter Bee Escape (*Plastic*).
- **Cat. No: WH-046** Bee hive Nuc entrance gate.
- **Cat. No: WH-047** Mouse-Guard for hive (*plastic*).
- **Cat. No: WH-030** Handle for hives ( *galvanized*).



**WH-030**



- **Cat. No: WH-050** Skep straw hive.  
Many sizes for skep straw hive.

**WH-050**

## Accessories



AS-035

- **Cat. No: AS-035** Swarm catcher.

- **Cat. No: AS-037** Frame Holder.  
Suitable for all sizes of frame and hives.



AS-037



AS-036

- **Cat. No: AS-036** Frame side bar.  
End bars made of plastic ( langstroth).



AS-042

- **Cat. No: AS-042** Tie strap.

Tightly woven, strong and durable straps with minimal stretch and very secure locking mechanism.  
Very well suited for migratory Hives or just to keep your hive parts together.

# Hives

## Accessories



**EX-122**

- **Cat. No:** EX-122 *solar wax.*

*Stainless steel with stand.*



**EX-010**

- **Cat. No:** EX-010 *Plastic excluder (all sizes).*

*Langstroth - dadant 10f - dadant 12f - Bn hives.*



**WH-032**

- **Cat. No:** WH-032 *hive connector1.*

*To connect he with super (galvanized).*



**WH-033**

- **Cat. No:** WH-033 *hive connector2.*

*(Stainless steel).*

## Feeders



**WF-030**

- **Cat. No: WF-030** *Plastic feeder for Langstroth.*

It can be hung inside the hive body like a frame.  
Bees can remove feed even in cold weather.

Leak-proof, one-piece molded plastic. Roughened interior surface provides foothold for bees.

- **Cat. No: WF-031** *Top plastic feeder.*

Leak-proof, one-piece molded plastic.  
surface provides foothold for bees.  
Suitable for langtroth & dadant size.



**WF-031**



**BT-110**

- **Cat. No: BT-110** *Pollen trap.*

External pollen trap placed in front of hive,  
With plastic mesh.

The pollen brushed off and fall into a tray.

# Hives

## Combs



**FD-008**



**FD-015**



**FD-080**



**FD-082**

- **Cat. No: FD-008** *Beeswax foundation sheets.*

Thick beeswax foundation, all sizes available.

- **Cat. No: FD-015** *Plastic foundation.*

High quality plastic foundation unwaxed for Langstroth frames.

Length: 425 mm.

Height: 213 mm.

- **Cat. No: FD-080** *Foundation machine smooth.*

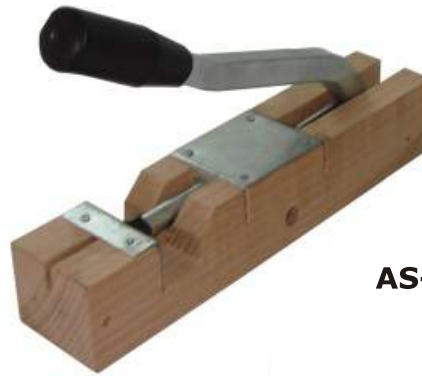
Aluminum alloy  
diameter 85mm  
width: 310mm

- **Cat. No: FD-082** *Foundation machine with cell.*

Aluminum alloy and cells  
diameter 85mm  
width: 310mm.

## Embedders & Wires

- **Cat. No: AS-088** Hole punch.



**AS-088**

- **Cat. No: AS-089** Awl.



**AS-089**



**BT-064**

- **Cat. No: BT-064** Wire crimper.  
A tool for tightening of wires.

-Cat. No. BT-065 Wire crimper metal



**BT-065**

-**Cat. No: AS-060** Copper eyelets.

Small copper eyelets are inserting into the wiring holes.



**AS-060**



# Hives

## Embedders & Wires

**-Cat. No: AS-054** *Electric wax embedder transformer.*

Transformer to heat the wire of the frame,



**-Cat. No: AS-052** *Spur embedder.*

This manual embedder wheel have brass head, can have 2 position.



**-Cat. No: AS-053** *Electric embedder.*

Same as spur embedder but electric heated.



## Embedders & Wires



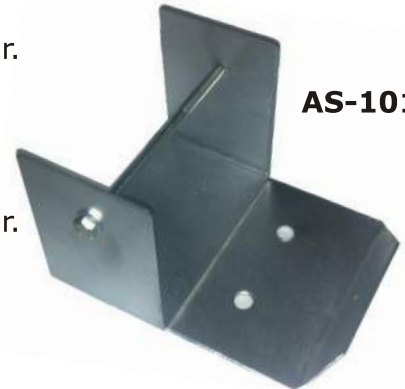
**AS-100**

- **Cat. No: AS-100** wire spool holder.

Suitable for 250g or 1/2lb.

- **Cat. No: AS-101** wire spool holder.

Suitable for 500g & 1kg.



**AS-101**

-**Cat. No: AS-096** *Stainless steel wire spool 250g.*

250g stainless steel wire with high quality plastic spool.

-**Cat. No: AS-097** *Stainless steel wire spool 500g.*

500g stainless steel wire with high quality plastic spool.

-**Cat. No: AS-098** *Stainless steel wire spool 1000g.*

1000g stainless steel wire with high quality plastic spool.

- **Cat. No: AS-099** *Stainless steel wire spool 4kg.*

4kg stainless steel wire with high quality plastic spool.

-**Cat. No: AS-091** *Galvanize wire spool 250g.*

250g galvanized wire with high quality plastic spool.

- **Cat. No: AS-093** *Galvanize wire spool 500g.*

500g galvanized wire with high quality plastic spool.

- **Cat. No: AS-094** *Galvanize wire spool 1000g.*

1000g galvanized wire with high quality plastic spool.

- **Cat. No: AS-095** *Galvanize wire spool 4kg.*

4kg galvanized wire with high quality plastic spool.



**AS-091**      **AS-096**

**AS-093**      **AS-097**

**AS-094**      **AS-098**

**AS-095**      **AS-099**

# Tools

## Hive tools



**BT-102**



**BT-103**



**BT-104**

- **Cat. No: BT-102** *Bee tool painted.*  
Hard steel painted.
- **Cat. No: BT-103** *Bee tool standard.*  
Long model, sharp, spring steel, can't be bent.
- **Cat. No: BT-104** *Bee tool "J" type.*  
J type tool -The professional's choice, Can't be bent.
- **Cat. No: BT-105** *Bee tool italian.*
- **Cat. No: BT-106** *Bee tool 7".*



**BT-107**



**BT-108**



**BT-105**



**BT-106**

-Cat. No: BT-109 Bee Tool with wood handle.

-Cat. No: BT-110 Bee Tool with plastic handle.

- **Cat. No: BT-107** *Bee tool big1.*

- **Cat. No: BT-108** *Bee tool big2..*



**BT-109**



**BT-110**

- **Cat. No: BT-070** *Brush standard nylon hair.*

Wood hand good quality with nylon smooth bristle, standard size.

- **Cat. No: BT-071** *Brush standard horse hair.*

Wood hand good quality with horse smooth bristle, standard size.

- **Cat. No: BT-073** *Brush big size horse hair.*

Wood hand good quality with horse smooth bristle, bigger size.



**BT-070**



**BT-071**



**BT-073**

## Smokers



**SM-005**



**SM-004**

- **Cat. No: SM-004** Smoker 4X7 w/o shield. American style - stainless steel grate in the bottom.

- **Cat. No: SM-005** Smoker 4X7 w shield. American style - stainless steel grate in the bottom.

- **Cat. No: SM-006** Smoker 4X10 w/o shield. American style - stainless steel grate in the bottom.

- **Cat. No: SM-007** Smoker 4X10 w shield. American style - stainless steel grate in the bottom.



**SM-007**



**SM-006**

- **Cat. No: SM-014** Bellow all plastic.

- **Cat. No: SM-015** Bellow plastic sheet.



**SM-010**  
**SM-011**



**SM-008**  
**SM-009**



**SM-014**  
**SM-015**  
**SM-016**  
**SM-017**

- **Cat. No: SM-016** Bellow pvc.

- **Cat. No: SM-017** Bellow real leather.

- **Cat. No: SM-012** Smoker Rauchboy big. 10 cm- stainless steel- barrel grate.

- **Cat. No: SM-013** Smoker Rauchboy small. 8 cm- stainless steel- barrel grate.

- **Cat. No: SM-008** Smoker 4X7 w/o shield. European style with barrel grate inside.

- **Cat. No: SM-009** Smoker 4X7 w shield. European style with barrel grate inside.

- **Cat. No: SM-010** Smoker 4X10 w/o shield. European style with barrel grate inside.

- **Cat. No: SM-011** Smoker 4X10 w shield. European style with barrel grate inside.



**SM-013**



**SM-012**

# Tools

## Hive tools



**BT-062**



**BT-060**

- **Cat. No: BT-060** *Frame grip.*  
The frame grip is a tool to hold frames from the hives. Round hand, more convenient for beekeepers, and wide enough to hold any kind of frame.



**BT-063**



**BT-065**

- **Cat. No: BT-062** *Frame grip2. Stainless steel painted with tool.*

-Cat. No: BT-063 *Frame grip 3, standard gripe with too.*



**BT-068**

- **Cat. No: BT-065** *Excluder cleaner..*



**BT-069**

- **Cat. No: BT-068** *Frame cleaner 1.*

- **Cat. No: BT-069** *Frame cleaner 2..*

## Hive tools



- **Cat. No: BT-045** *Wasp Trap.*

**BT-045**



**BT-040**

- **Cat. No: BT-040** *Manual Refractometer.*

Honey Refractometer to measure the Moisture content of honey.

Built-in visual scale covers

A range of moisture content.

Only a drop of honey is necessary to

Quickly measure the moisture content.



**BT-042**

- **Cat. No: BT-042** *Digital Refractometer.*

Pocket digital honey Refractometer,  
Good quality.



**BT-121**

- **Cat. No: BT-121** *Observations hive two frames.*

For two frame with feeder and glass to offer view for bees.



**BT-120**

- **Cat. No: BT-120** *Observations hive one frame.*

For one frame with feeder and glass to offer view for bees.

# Productive clothing

## Veils



- **Cat. No: PV-055** Veil Folding open from up, iron mesh with rope. Cool and convenient. Open top with elastic, fit any hat or helmet. Strong seamed wire netting face. available with rope or elastic



- **Cat. No: PV-059** Veil folding with cloth hat attached, iron mesh with rope. Cool and convenient. strong seamed wire netting face, available with rope or elastic



- **Cat. No: PV-063** Veil round open from up, iron mesh with rope. Round veil open from up iron mesh. wire veil of one-piece round. Allows clear view in all directions. Available with rope or elastic.



- **Cat. No: PV-057** Veil folding with cloth hat attached, iron mesh with rope. Cloth material from down.. strong seamed wire netting face, available with rope or elastic

# Productive clothing

## Veils



- **Cat. No: PV-067** Veil round with cloth hat and poly mesh, attached with rope or elastic. A poly mesh veil of one-piece round with cloth hat. Allows clear view. Open mesh netting, top and bottom. Bottom drawstring or elastic. Cool.



- **Cat. No: PV-069** Veil round open from up and poly mesh attached with rope or elastic. poly mesh veil of one-piece round. Allows clear view in all directions. Elastic top. Bottom rope or elastic.



- **Cat. No: PV-073** Simple veil. Without rings inside easy to use with the straw hat or cloth hat.



- **Cat. No: PV-071** Sheriff veil with elastic. Sherriff style veil, clothing line. Elastic bottom, high quality.



**PV-071**





# Productive clothing

## Shirts (Bee Jackets)

- **Cat. No: PS-074** *Bee shirt (economy).*

Shirt with polymesh one piece economy.  
Sizes available S. M. L. XL .XXL & XXXL.



- **Cat. No: PS-075** *Bee shirt (Jacket).*

Shirt with high collar used for veil  
with rope, high quality.  
Sizes available S. M. L. XL .XXL & XXXL.

- **Cat. No: PS-076** *Bee shirt (Jacket).*

Shirt with zipper to attach veil  
with zipper, high quality.  
Sizes available S. M. L. XL .XXL & XXXL.

- **Cat. No: PS-078** *Bee shirt (Jacket).*

Shirt with high collar to use with veil  
with ropes or elastic can be opened  
in front with zipper high quality  
and convenient for beekeeper.  
Sizes available S. M. L. XL .XXL & XXXL.

- **Cat. No: PS-077** *Bee shirt (Jacket).*

Shirt with zipper to attach veil with zipper,  
can be opened in front with zipper  
high quality and convenient for beekeeper.  
Sizes available S. M. L. XL .XXL & XXXL.



# Productive clothing

## Shirts (Bee Jackets)



**PS-076 & PV-055**



**PS-077 & PV-071**



**PS-076 & PV-065**



**PS-076 & PV-063**

Application  
for veils  
and shirts.



**PS-076 & PV-069**



**PS-076 & PV-067**



# Productive clothing

## Coveralls (Bee Suits)



**PS-080**



**PS-080**

- **Cat. No: PS-080 Coverall.**  
Coverall with high collar to attach veil with rope, high quality.  
S.M.L.XL.XXL & XXXL are available.



**PS-081**



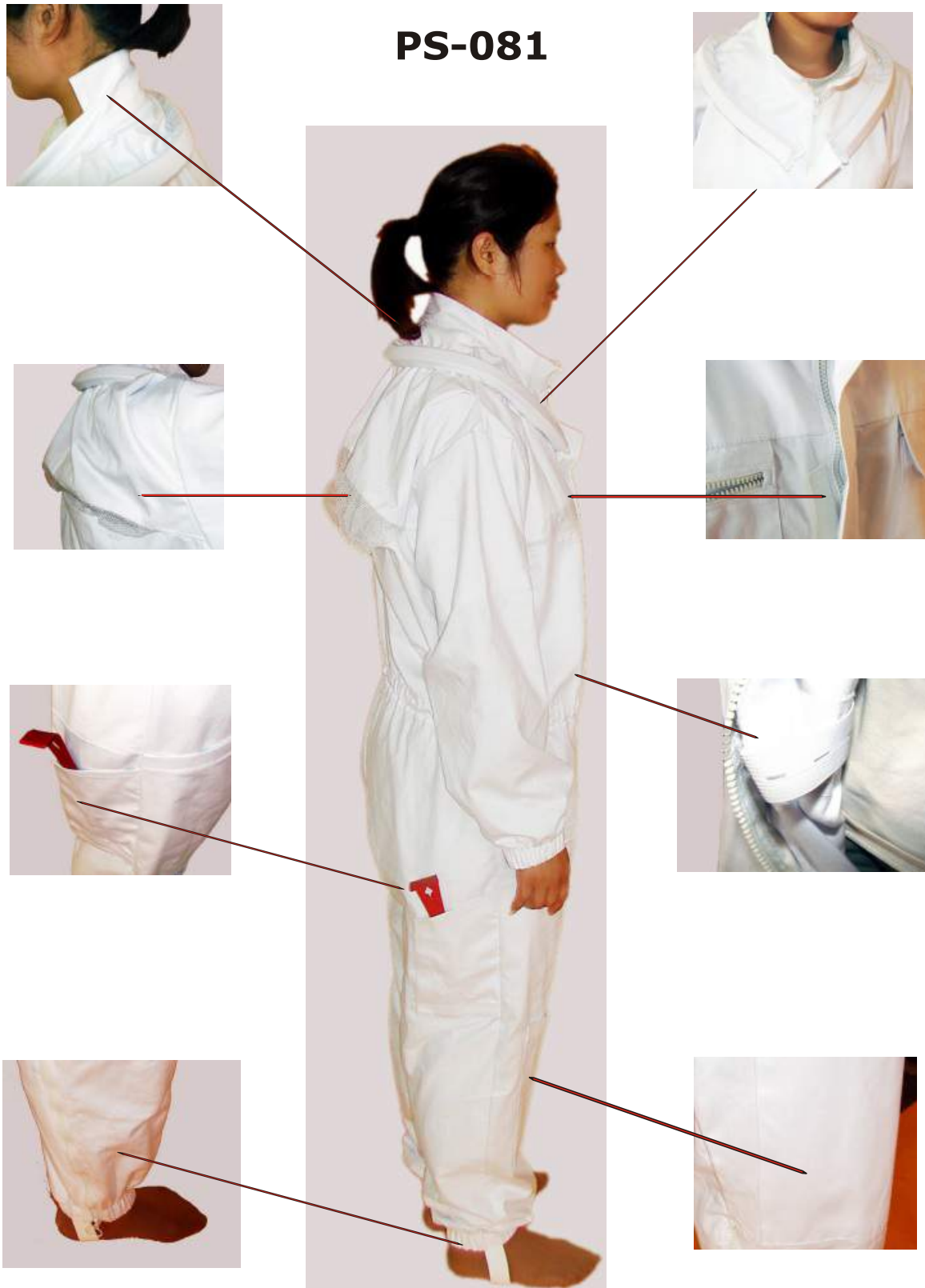
**PS-081**

- **Cat. No: PS-081 Coverall extra.**  
Coverall with zipper to attach veil with zipper, high quality.  
S.M.L.XL.XXL & XXXL are available.



# Productive clothing

## Coveralls (Bee Suits)



# Productive clothing

## Hats

-Cat. No: **PH-085** Cloth hat diameter 38cm.

With spring wire inside anti rusty, easy to clean.

-Cat. No: **PH-086** Cloth hat diameter 32cm.

With spring wire inside anti rusty, easy to clean.



- Cat. No: **PH-087** Straw hat.

One of the most comfortable and easiest-to-wear protection hats available.



- Cat. No: **PH-088** plastic hat.

Good ventilation, light weight.



# Productive clothing

## Gloves



- **Cat. No: PG-082** *Leather cowhide with sleeve and elastic.*

The hand is made of cowhide leather with good quality, Elbow length canvas sleeves with elastic closure at the top.

- **Cat. No: PG-083** *Leather cowhide with protection high quality.*

The hand is made of top cowhide leather. Elbow length cotton sleeves with elastic closure.



- **Cat. No: PG-084** *leather cow hide with protection high quality and vented.*

The hand is made of top cowhide leather. Elbow length cotton sleeves with elastic closure. The cuff with 100% nylon, full circular ventilation, firmly stitched between glove and sleeve for extra coolness on hot days.



# Honey Harvest

## Economy Extractors



-Cat. No: **ET-090** 2 frames deep / 4 frames shallow dia.400 without legs (economy).

- Cat. No: **ET-091** 2 frames deep / 4 frames shallow, with legs, dia.400 (economy).

-Cat. No: **ET-092** 3 frames deep, dia.400 without legs (economy).

-Cat. No: **ET-093** 3 frames deep, with legs dia.400 (economy).

- Cat. No: **ET-094** 2 frames deep / 4 frames shallow, with honey tank dia.400 (economy).

-Cat. No: **ET-095** 3 frames deep, with honey tank dia.400 (economy).



- **Stainless steel extractor economy.**
- **Tank diameter (cm) : dia.400.**
- **strong steel teeth wheel.**
- **Nylon honey gate dia. 40.**
- **Tank height (cm): 60.**



# Honey Harvest

## Hobby Extractors



**ET-100 & ET-104**



**ET-102 & ET-106**



**ET-107**



**ET-107**



**ET-108  
ET-109**

- Stainless steel tank well polished,
- Stainless steel basket.
- Free wheel transmission hand drive or gear motor multi speed.
- Nylon honey gate dia. 40.
- Transparent lids .
- Tank height (cm): 62.
- Total height (cm) : 115cm.
- Tank diameter (cm) : dia.400.
- Height floor to gate (cm): 45cm.

**-Cat. No: ET-100** Stainless steel 2 frames deep / 4 frames shallow dia.400 without legs (manual).

**- Cat. No: ET-102** Stainless steel 2 frames deep / 4 frames shallow , with legs dia.400 (manual).

**-Cat. No: ET-103** stainless steel 3 frames deep, with legs dia. 400 motorized.

**-Cat. No: ET-104** Stainless steel 3 frames deep, dia.400 without legs (manual).

**-Cat. No: ET-106** Stainless steel 3 frames deep, with legs dia.400 (manual).

**-Cat. No: ET-107** stainless steel 3 frames deep, with legs dia. 400 (motorized).



**-Cat. No: ET-108** Stainless steel 2 frames deep / 4 frames shallow with honey tank dia.400 (manual).

**-Cat. No: ET-109** Stainless steel 2 frames deep / 4 frames shallow , with honey tank dia.400 (motorized).

**-Cat. No: ET-110** stainless steel 3 frames deep, with honey tank dia. 400 (manual).

**-Cat. No: ET-111** Stainless steel 3 frames deep, with honey tank dia.400 (motorized).





# Honey Harvest

## Hobby Extractors



**ET-121**  
**ET-113**  
**ET-115**



**ET-115**  
**ET-119**

- Stainless steel tank well polished,
- Stainless steel basket.
- Free wheel transmission hand drive or gear motor multi speed..
- Nylon honey gate dia. 40.
- Transparent lids with hinges.
- Tank height (cm): 62.
- Total height (cm) : 115cm.
- Tank diameter (cm) : dia.53.
- Height floor to gate (cm): 45cm.

- Cat. No: ET-112** Stainless steel 3 frames.. deep/6 frames shallow (Tangential) dia.530(manual).
- Cat. No: ET-113** Stainless steel 3 frames. deep/6 frames shallow (Tangential) dia.530(motorized).
- Cat. No: ET-114** Stainless steel 3 frames. deep(Tangential)/9 frames shallow (radial) Nylon cage, dia.530(Manual).
- Cat. No: ET-115** Stainless steel 3 frames. deep (Tangential)/9 frames shallow (radial), Nylon cage, dia.530(Motorized).
- Cat. No: ET-116** Stainless steel 3 frames.. deep/6 frames shallow (Tangential) with honey tank dia.530(manual).
- Cat. No: ET-117** Stainless steel 3 frames.. deep/6 frames shallow (Tangential) with honey tank dia.530(motorized).
- Cat. No: ET-118** Stainless steel 3 frames. deep(Tangential)/9 frames shallow (radial) Nylon cage with honey tank, dia.530(Manual).
- Cat. No: ET-119** Stainless steel 3 frames. deep(Tangential)/9 frames shallow (radial) Nylon cage with honey tank, dia.530(motorized).
- Cat. No: ET-120** Stainless steel 4 frames. deep (Tangential) dia.530 (manual).
- Cat. No: ET-121** Stainless steel 4 frames. deep (Tangential) dia.530 (motorized).
- Cat. No: ET-122** Stainless steel 4 frames. deep (Tangential),withhney tank dia.530 (manual).
- Cat. No: ET-123** Stainless steel 4 frames. deep (Tangential), with honey tank dia.530 (motorized).



**ET-120**  
**ET-112**  
**ET-114**



**ET-116**  
**ET-118**  
**ET-122**

# Honey Harvest

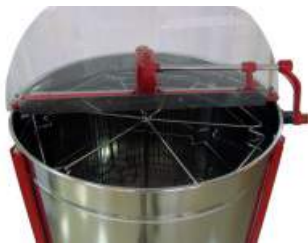
## Hobby Extractors

- Stainless steel tank well polished,
- Stainless steel basket.
- Free wheel transmission hand drive or gear motor multi speed..
- Nylon honey gate dia. 50.
- Transparent lids with hinges.
- Tank height (cm): 62.
- Total height (cm) : 115cm.
- Tank diameter (cm) : dia.64.
- Height floor to gate (cm): 45cm.



**ET-124**

ET-140



ET-125

**ET-141**

- Cat. No: ET-124** Stainless steel 4 frames deep/ 8 frames shallow (Tangential) dia.640 (manual).
- Cat. No: ET-125** Stainless steel 4 frames deep/ 8 frames shallow (Tangential) dia.640 (motorized).
- Cat. No: ET-140** Stainless steel 6 frames deep (Tangential) dia.640 (manual).
- Cat. No: ET-141** Stainless steel 6 frames deep (Tangential) dia.640 (motorized).

ET-120 & ET-121



ET-124 & ET-125



# Honey Harvest

## Radial Extractors

- Cat. No: ET-145 9 frames radial
- Cat. No: ET-148 12 frames radial.
- Cat. No: ET-150 18 frames radial.
- Cat. No: ET-152 24 frames radial.
- Cat. No: ET-154 36 frames radial.
- Cat. No: ET-156 48 frames radial.
- Cat. No: ET-158 60 frames radial.
- Cat. No: ET-160 120 frames radial.  
(Smooth reel)



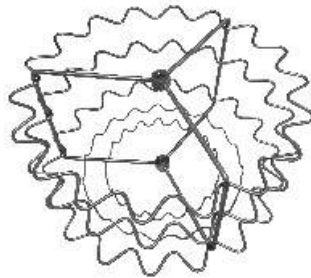
ET-145



ET-148



ET-154



ET-150



ET-156



ET-158



ET-160

# Honey Harvest

## Reversible Extractors



**ET-200**



**ET-200**



**ET-210**



**ET-220**

- **Cat. No: ET-200** Reversible 4 frames 25x42x5.
- **Cat. No: ET-201** Reversible 4 frames 30x42x5.
- **Cat. No: ET-202** Reversible 4 frames 34x42x5.
- **Cat. No: ET-210** Reversible 6 frames 25x42x5.
- **Cat. No: ET-211** Reversible 6 frames 30x42x5.
- **Cat. No: ET-212** Reversible 6 frames 34x42x5.
- **Cat. No: ET-220** Reversible 8 frames 25x42x5.
- **Cat. No: ET-221** Reversible 8 frames 30x42x5.
- **Cat. No: ET-222** Reversible 8 frames 34x42x5.
- **Cat. No: ET-230** Reversible 12 frames 25x42x5.
- **Cat. No: ET-231** Reversible 12 frames 30x42x5.
- **Cat. No: ET-232** Reversible 12 frames 34x42x5.
- **Cat. No: ET-240** Reversible 16 frames 25x42x5.
- **Cat. No: ET-241** Reversible 16 frames 30x42x5.
- **Cat. No: ET-242** Reversible 16 frames 34x42x5.



# Honey Harvest

## Uncapping

-Cat. No. **UP-102** plastic Scratcher B.

-Cat. No. **UP-103** plastic Scratcher B  
bending needles.



**UP-103**

**UP-102**



-Cat No. **UP-105** Scratcher stainless steel.

**UP-105**



-Cat No. **UP-108** Scratcher laser cutting.

**Up108**



-Cat. No. **UP-100** plastic Scratcher A.

-Cat. No. **UP-101** plastic Scratcher A  
bending needles.

**UP-101**

**UP-100**

# Honey Harvest

## Uncapping

-Cat No: **UP-110** *Uncapping knife 1 plastic hand many models.*

-Cat No: **UP-111** *Uncapping knife 2 wood hand big.*

-Cat No: **UP-112** *Uncapping knife 3 wood hand small.*

-Cat No: **UP-113** *Uncapping knife steam.*

-Cat No: **UP-114** *Uncapping knife electric.*

-Cat No: **UP-118** *Uncapping roller.*



**UP-110**



**UP-112**

**UP-111**



**UP-113**



**UP-118**



**UP-114**



# Honey Harvest

## Uncapping



**UP-160**



**UP-155**



**UP-165**

-Cat. No.:UP-155 comb capper.

-Cat. No: **UP-160** *Uncapping tray simple.*

-Cat. No: **UP-165** *Uncapping tray 50cm size.*

-Cat. No: **UP-166** *Uncapping tray 100 size.*

-Cat. No: **UP-168** *Professional uncapping tray 200cm.*

-Cat. No: **UP-170** *Uncapping machine.*



**UP-166**



**UP-170**



**UP-168**

# Honey Harvest

## Filters



**AS-182**



**AS-183**

-Cat. No. **AS-182** Double strainer A.

-Cat. No. **AS-183** Double strainer B.



**AS-185**



**AS-184**

-Cat. No. **AS-184** Double strainer c.

-Cat. No. **AS-185** Double strainer D.



**AS-193**



**AS-197**

-Cat. No: **AS-180** Filter stainless steel.  
Fit barrels diameter from 30cm to 35cm.

-Cat. No: **AS-181** Filter stainless steel.  
Fit barrels diameter from 35 to 55cm.



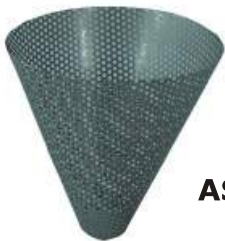
**AS-190**



**AS-192**

-Cat. No: **AS-190** Filter nylon conic 32 cm.  
Available in fine and ultra fine mesh.

-Cat. No: **AS-192** Filter nylon conic 45 cm.  
Available in fine and ultra fine mesh.



**AS-195**



**AS-181**

**AS-180**

-Cat. No: **AS-193** Filter nylon round 32 cm.  
Available in fine and ultra fine mesh.

-Cat. No: **AS-195** Filter stainless steel conic.

-Cat. No: **AS-197** stand for filter conic.

-Cat. No: **AS-199** Frame filter nylon.  
Available in 2 sizes

-Cat. No: **AS-200** honey mixer 1.

-Cat. No: **AS-201** honey mixer 2.

-Cat. No: **AS-202** honey mixer 3



**AS-202**

**AS-201**



**AS-200**

**AS-199**





# Honey Harvest

## Honey Storage



- Cat. No: **HS-024** Honey tank A 25kg.
- Cat. No: **HS-025** Honey tank A 30kg.
- Cat. No: **HS-026** Honey tank A 50kg.
- Cat. No: **HS-028** Honey tank A 100kg.
- Cat. No: **HS-030** Honey tank A 200kg.
- Cat. No: **HS-034** Honey tank A 300kg.
- Cat. No.: HS-036 Honey tank A 400kg.
- Cat. No.: HS-037 Honey tank A 500kg.



**HS-111**



AS-205  
AS-206

- Cat. No: AS-205 heater for conics filter, diameter 32cm.
- Cat. No: AS-206 heater for conics filter, diameter 45cm.

- Cat. No: **HS-111** Legs.  
legs for honey tanks, many sizes.

- Cat. No.: HS-040 Honey tank B 25kg.
- Cat. No.: HS-041 Honey tank B 30kg.
- Cat. No.: HS-042 Honey tank B 50kg.
- Cat. No.: HS-043 Honey tank B 100kg.
- Cat. No.: HS-044 Honey tank B 200kg.
- Cat. No.: HS-045 Honey tank B 300kg.
- Cat. No.: HS-046 Honey tank B 400kg.
- Cat. No.: HS-047 Honey tank B 500kg.

### German Style



# Honey Harvest

## Accessories & Parts

AS-211  
AS-212



-Cat. No: AS-211 Motor.

Gearbox motor, 80W,  
240V , variable speed  
2 direction.

-Cat. No: AS-212 Motor.

Gearbox motor, 80W,  
110V. , variable speed  
2 direction.



AS-001



AS-002



AS-003



AS-004



AS-005



AS-008



AS-210

-Cat. No: AS-210 Manual machine part.

Manual drive with  
free wheeling & brake.



AS-001



AS-002

-Cat. No: **AS-001** Honey gate nylon 4cm.  
Made from food grade nylon,  
and stainless steel screws.

-Cat. No: **AS-002** Honey gate nylon 5cm.  
Made from food grade nylon,  
and stainless steel screws.

-Cat. No: **AS-003** Honey gate 4cm.  
Stainless steel.

-Cat. No: **AS-004** Honey gate 5cm.  
Stainless steel.

-Cat. No: **AS-005** Honey gate nylon 4cm.

-Cat. No: **AS-008** handle stainless steel.



# Queen Rearing

## Nucs & Rearing Tools



QR-121

QR-120

-Cat. No: **QR-120** Polystyrene nuc.  
*Complete set with 3 frames & feeder.*

-Cat. No: **QR-121** Ultra feeder.



QR-234

QR-233

-Cat. No: **QR-233** Clip catcher plastic.

-Cat. No: **QR-234** Clip catcher stainless steel.

-Cat. No: **QR-230** Plunger marking cage.

-Cat. No: **QR-231** Marking queen cage.

-Cat. No: **QR-235** Marking queen pen.



QR-231



QR-230



QR-235

# Queen Rearing

## Nucs & Rearing Tools



QR-220



QR-174

-Cat. No: QR-140 Grafting Tool Plastic.

-Cat. No: QR-141 Grafting Tool stainless steel.

-Cat. No: QR-142 Grafting Tool magnifying.

-Cat. No: QR-143 Grafting Tool swiss style.  
Have 2 models for right & left hand.

-Cat. No: QR-170 Plastic cell strip (single).

-Cat. No: QR-171 Plastic cell strip (double).

-Cat. No: QR-180 Royal jelly spoon.

-Cat. No: QR-174 Plastic queen cell black.

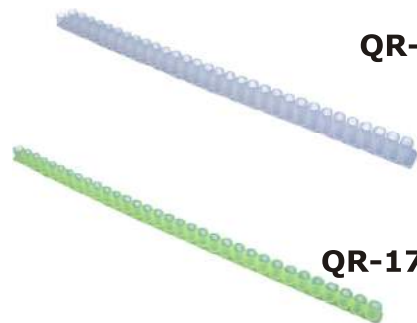
-Cat. No: QR-175 queen rearing set 5 pieces.

-Cat. No: QR-220 Queen mailing cage.

plastic mailing cage ventilated.



QR-175



QR-171

QR-170



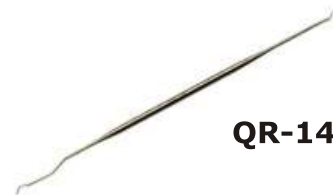
QR-143



QR-142



QR-140



QR-141



QR-180

## Toys & Decoration

- **Cat. No: HJ-040** China jars (ceramic)1.

- **Cat. No: HJ-041** China jars (ceramic)2.

- **Cat. No: HJ-042** China jars (ceramic)3.

Jar with cover + spoon+ plate ( one set).

- **Cat. No: HJ-043** China jars (ceramic)4.

3 jars as one set.



**HJ-041**



**HJ-040**



**HJ-042**



**HJ-043**



**HJ-020**



**HJ-021**



**HJ-022**

- **Cat. No: HJ-020** honey spoon wood small.

- **Cat. No: HJ-021** honey spoon wood bigl.

- **Cat. No: HJ-022** honey spoon stainless steel.

- **Cat. No: TG-023** Bee Badge metal (silver color).

**TG-023**



- **Cat. No: TG-024** Bee Badge metal (golden lcolor).

**TG-024**



-Cat.No.: TG-030 Key chain (Metal)

-Cat.No.: TG-035 Key chain (Metal)

-Cat.No.: TG-031 Key chain (Rubber)

-Cat.No.: TG-036 Key chain (Metal)

-Cat.No.: TG-032 Key chain (Metal)

-Cat.No.: TG-037 Key chain (Plastic)

-Cat.No.: TG-033 Key chain (Rubber)

-Cat.No.: TG-034 Key chain (Plastic)



**TG-031**



**TG-037**



**TG-034**



**TG-032**



**TG-030**



**TG-036**



**TG-033**

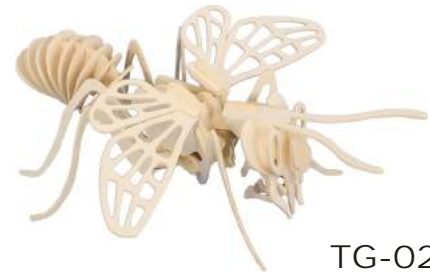


**TG-035**

## Toys & Decoration

- Cat. No: TG-025 *Wood craft.*

Beautiful wood craft for bee and bumble bee.



TG-025

- Cat. No.: TG-040 Bee Toy 1
- Cat. No.: TG-041 Bee Toy 2
- Cat. No.: TG-042 Bee Toy 3
- Cat. No.: TG-043 Bee Toy 4
- Cat. No.: TG-044 Bee Toy 5
- Cat. No.: TG-045 Bee Toy 6
- Cat. No.: TG-046 Bee Toy 7



TG-043



TG-044

- Cat. No.:TG-011 Bee Hat
- Cat. No.:TG-012 Bee Band



TG-011



TG-012

**Solid**



TG-042



TG-041

TG-046

- Cat. No.:TG-015 Plush Toy1
- Cat. No.:TG-016 Plush Toy2
- Cat. No.:TG-017 Plush Toy3
- Cat. No.:TG-018 Plush Toy4



TG-045



TG-040

**plush**



TG-015



TG-016



TG-017



TG-018

- Cat. No: TG-010 Bee Anatomy.

A full color guide illustrate interior of bee anatomy include:

1. Digestive and excretory systems.
2. Circulatory, respiratory, and nervous systems.
3. Endocrine system.
4. Reproductive organs.



TG-010



# Bee Products

## Royal Jelly



BP-134



BP-135

- Cat. No: BP-130 *Fresh royal jelly.*

Packaging: aluminum bag or plastic can, 1kg.

- Cat. No: BP-134 *Royal jelly powder.*

Packaging: aluminum bag, 1kg, 5kg, 12.5kg.

- Cat. No: BP-135 *Royal jelly capsule.*

Packaging: aluminum bag, 1kg, 5kg, 12.5kg.



BP-130

## Wax



BP-140



BP-145

- Cat. No: BP-140 *pure beeswax.*

Packaging: aluminum bag, 1kg, 5kg, 12.5kg.

- Cat. No: BP-145 *Paraffin wax.*

Packaging: aluminum bag, 1kg, 5kg, 12.5kg.

- Cat. No: BP-148 *Ozokerite wax.*

Packaging: aluminum bag, 1kg, 5kg, 12.5kg.



BP-145





# Bee Products

## Pollen

- Cat. No: BP-100 *mixed pollen*.

Packaging: aluminum bag, 1kg, 5kg, 12.5kg.

- Cat. No: BP-101 *Rape pollen*.

Packaging: aluminum bag, 1kg, 5kg, 12.5kg.

- Cat. No: BP-102 *Tea pollen*.

Packaging: aluminum bag, 1kg, 5kg, 12.5kg.

- Cat. No: BP-103 *Lotus pollen*.

Packaging: aluminum bag, 1kg, 5kg, 12.5kg.

- Cat. No: BP-104 *Watermelon pollen*.

Packaging: aluminum bag, 1kg, 5kg, 12.5kg.

- Cat. No: BP-105 *Sunflower pollen*.

Packaging: aluminum bag, 1kg, 5kg, 12.5kg.



BP-103



BP-105



BP-104



BP-106



BP-101



BP-102



BP-100

## Propolis

- Cat. No: BP-120 *Propolis Tablet*.

Packaging: aluminum bag, 1kg, 5kg, 12.5kg.

- Cat. No: BP-122 *Propolis capsule*.

Packaging: aluminum bag, 1kg, 5kg, 12.5kg.

- Cat. No: BP-124 *Propolis Powder*.

Packaging: aluminum bag, 1kg, 5kg, 12.5kg.

- Cat. No: BP-126 *Natural refined propolis block*.

Packaging: aluminum bag, 1kg, 5kg, 12.5kg.



BP-122



BP-120



BP-124



BP-126



# *Orient Bee Supplies*

All What Beekeepers Need

Factory address:

101,B, No.18, Mubei xi lu,  
Tianhe, Guangzhou , China

Tel-fax: + -86-32031945

Mobile1: 13660087267

Mobile2: 13725148028

Mobile3: 13825053836

[www.orientbee.com](http://www.orientbee.com)

[info@orientbee.com](mailto:info@orientbee.com)