

Types of Eggs, Larvae and Pupae

ENTO-5101

- Some common types of eggs are as follows:

1. Spherical:

- Rounded eggs, e.g., lemon butterfly, citrus leaf miner, hawk moth and red cotton bug

2. Oval:

- Egg-like in shape, e.g., bean aphid, silverfish

3. Elongate:

- Elongate shape, e.g., house fly, ak grasshopper



4. Stalked:

- These are with a pedicel or stalk. E.g., whiteflies, green lacewing

5. With appendages:

- with thread-like appendages which come out from the upper side
- e.g., water scorpions and stink bugs

6. Sculptured:

- with various designs or sculpturing,
- e.g., malarial mosquito and cabbage butterfly



TYPES OF LARVAE

1. Campodeiform:

- Elongate and flattened body
- Long thoracic legs
- Usually cerci on the end of abdomen,
- e.g., diving beetles, rove beetles



2. Carabiform:

- Modified form of campodeiform larva
- Flattened body, shorter legs and no cerci
- e.g., ground beetles and fireflies



3. Eruciform:

- Cylindrical with both thoracic and abdominal legs
- e.g., butterflies and moths



4. Scarabaeiform:

- Cylindrical and C-shaped with usually thoracic but no abdominal legs
- e.g., scarab beetles and pulse beetles



5. Elateriform:

- Thin, elongate, cylindrical with short, thoracic legs
- e.g., click beetles and darkling beetles



6. Platyform:

- Body is very broad with short or no legs
- e.g., some syrphid flies



7. Vermiform:

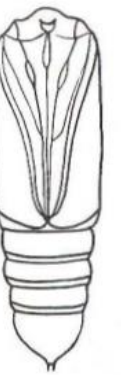
- Cylindrical, elongate, narrowing anteriorly and without legs
- e.g., flies, fleas and parasitic wasps



TYPES OF PUPAE

1. Obtect:

- The appendages (antennae, legs and wing pads) are firmly glued to the body,
- e.g., butterflies, moths and many beetles
- The obtect pupa of a butterfly is also called **Chrysalis**



OBTECT (BUTTERFLY)





EXARATE (WASP)

2. Exarate:

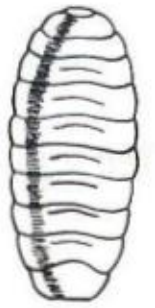
The appendages are free and not glued to the body

e. g., most wasps and bees, beetles



3. Coarctate:

- It is like an exarate pupa covered in a loose hardened case which is called puparium.
- This puparium is formed from last larval skin which is not shed but retained as a body 'covering
- e.g., most flies



COARCTATE (HOUSE FLY)

