

Spatial Data preparation Spatial Referencing

Spatial Data preparation

Data formats in ArcGis: Shape files

- Point shape files
- Line shape files
- Polygon shape files
- Not part of a geodatabase
- Can be edited in ArcGis

Spatial Data preparation

Data formats in ArcGis: Geodatabase

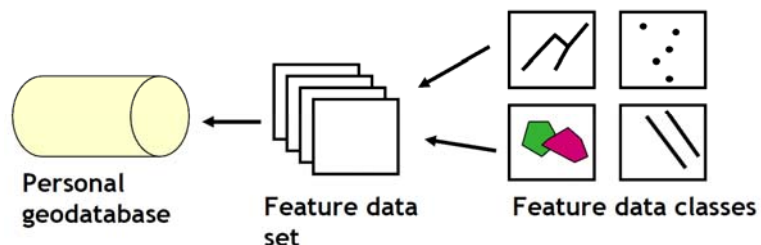
- Point feature classes
- Line feature classes
- Polygon feature classes
- Part of a geodatabase
- Feature classes with the same extent and projection can be grouped together in a feature data set
- Can be edited in ArcGis

Sami Alkeredmi-2012

Spatial Data preparation

Data formats in ArcGis: Geodatabase

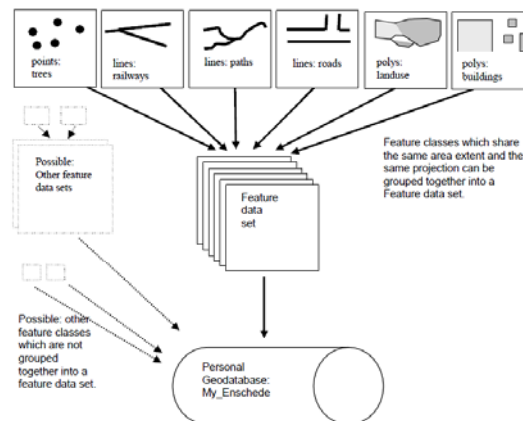
Geodatabase feature classes: Overview



Sami Alkeredmi-2012

Spatial Data preparation

Data formats in ArcGis: Geodatabase
Example of a geodatabase structure



Sami Alkeredmi-2012

Spatial Data preparation

What is a Geodatabase?

A Geodatabase is a database that stores geographic information. It is a data model that was introduced by ESRI in the ArcGIS software.

Sami Alkeredmi-2012

Spatial Data preparation

What is a Geodatabase?

A Geodatabase is a database that stores geographic information. It is a data model that was introduced by ESRI in the ArcGIS software.

Sami Alkeredmi-2012

Spatial Data preparation

Types of Geodatabases:

Personal Geodatabase, the File Geodatabase and the large (ArcSDE) Geodatabase.

Sami Alkeredmi-2012

Spatial Data preparation

Types of Geodatabases:

- Personal Geodatabase stores data in MS Access database. Personal Geodatabases can be read by multiple users but only edited by one. Its maximum size is 2GB. A Personal Geodatabase is useful for storing comparatively small data sets.
- The File Database stores data sets a folder of files. File Geodatabases can be used across different users on different platforms.
- The large Geodatabase stores data in a separate Oracle, SQL server, Informix or DB2 database that is connected to ArcGIS via ArcSDE (Spatial data engine).

Sami Alkeredmi-2012

Spatial Data preparation

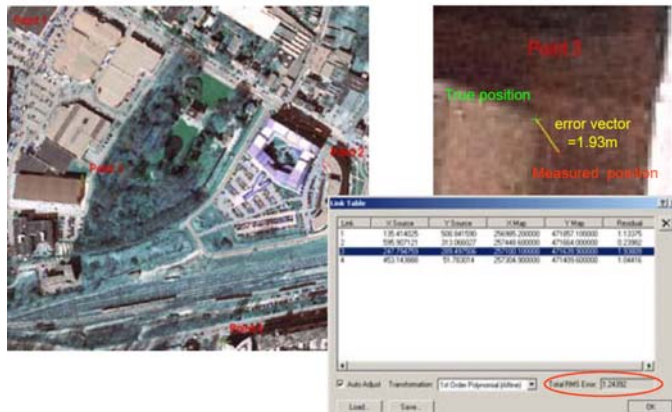
Create a Geodatabase:

- CREATE A FILE GEODATABASE
- CREATE A FEATURE DATA SET
- CREATE FEATURE CLASSES
- CREATE ATTRIBUTE FIELDS
- LOAD THE FEATURE DATA SET IN ARCMAP
- LOAD FEATURES FROM A SHAPE FILE INTO A FEATURE CLASS

Sami Alkeredmi-2012

Spatial Referencing

IMAGE RECTIFICATION:



Sami Alkeredmi-2012

Spatial Referencing

IMAGE RECTIFICATION:

ROOT MEAN SQUARES ERROR (RMSE):

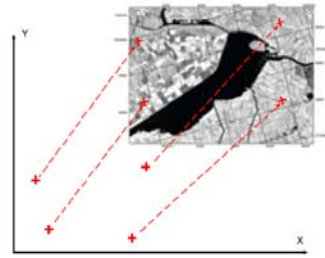
The Root Mean Squares Error (RMSE) is a statistical measure of accuracy for a coordinate measurement, indicating the average deviation of all the measured positions from their true positions.

The RMSE is used as an independent check of the quality of the Transformation.

Sami Alkeredmi-2012

Spatial Referencing

IMAGE RECTIFICATION:



Georeferencing

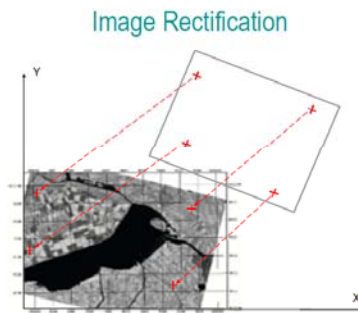


Image Rectification

Sami Alkeredmi-2012