

Middle ages

By

Natalia Molina Diaz

2°D

Medieval society

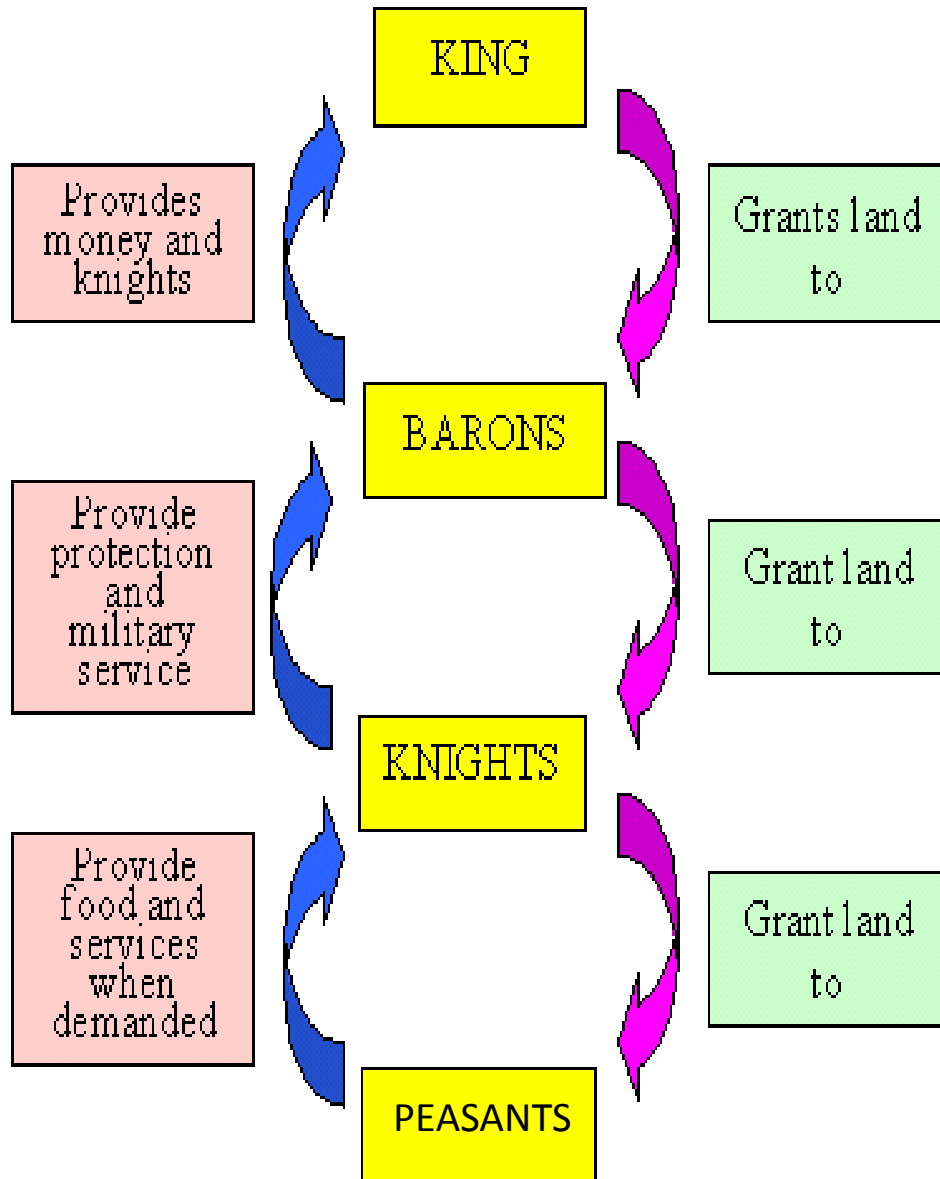
It was organized into a feudal system. The land was awarded to people in return for their services.

At the top was the king and in the bottom the peasants.

Medieval society



The Feudal Society

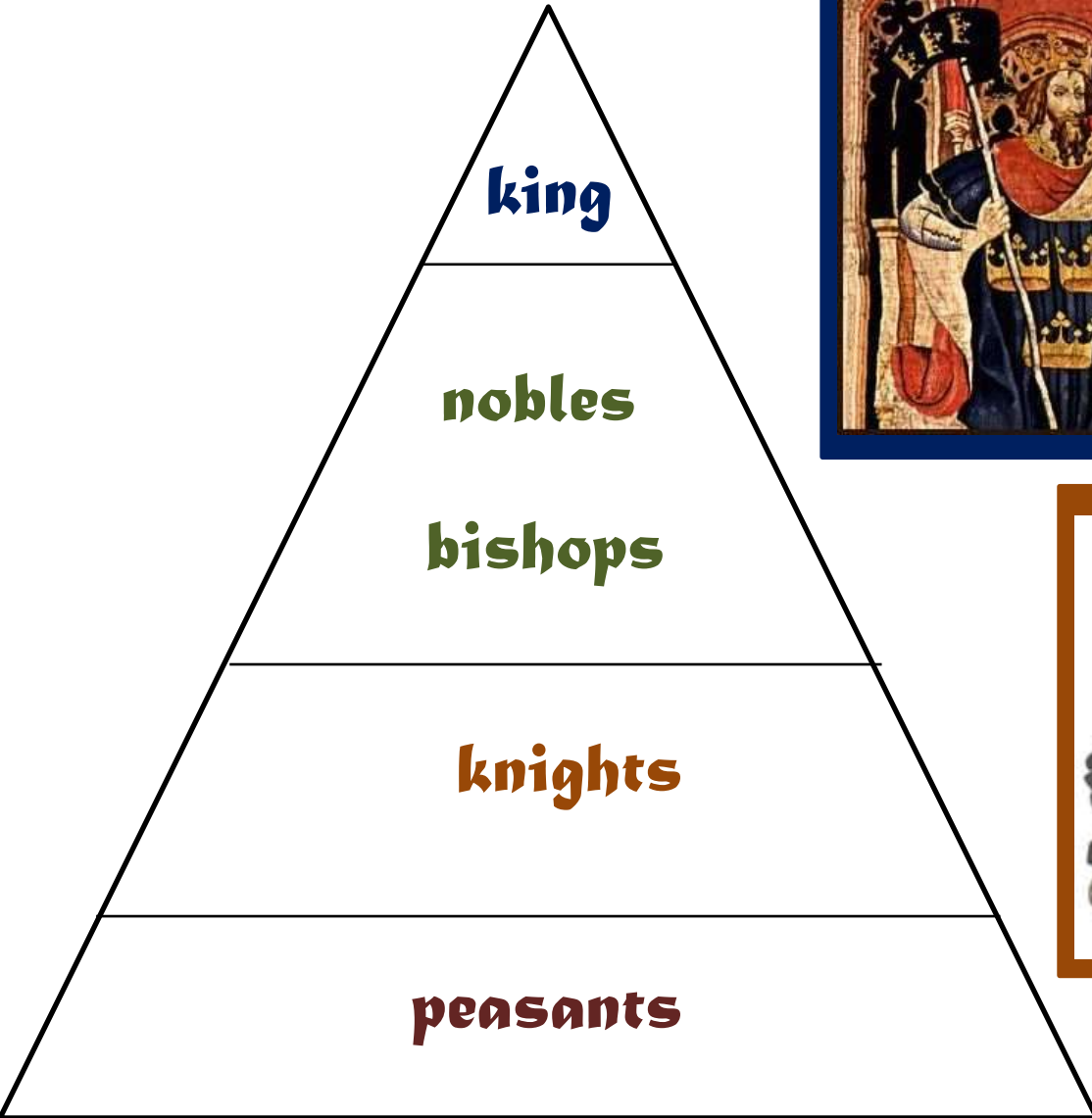


In the top was the king. He owned all the lands. He divided some of his land between the church and his nobles.

The barons, that were the most important nobles, divided some of his land between the knights that were the next in the feudal system.

The peasants were in the bottom of the feudal system.

The social pyramid



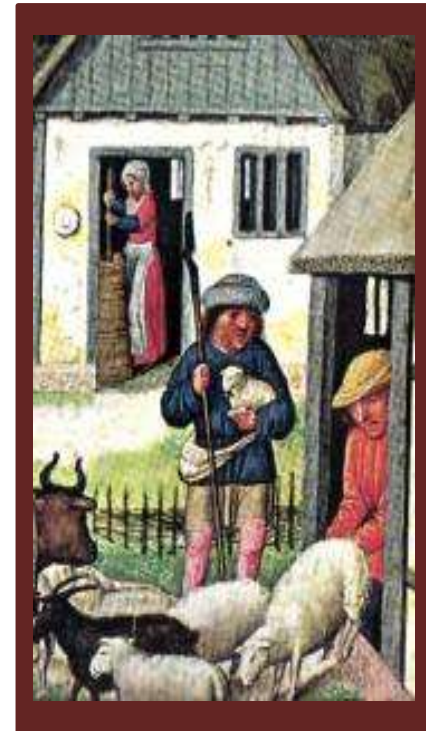
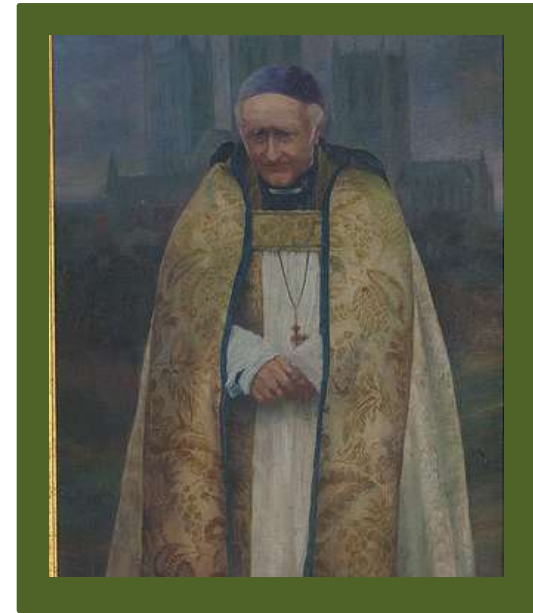
king

nobles

bishops

knights

peasants



William of Normandy

It was used in France by the Normans in 900. After William of Normandy conquered England, the system was introduced there, too.

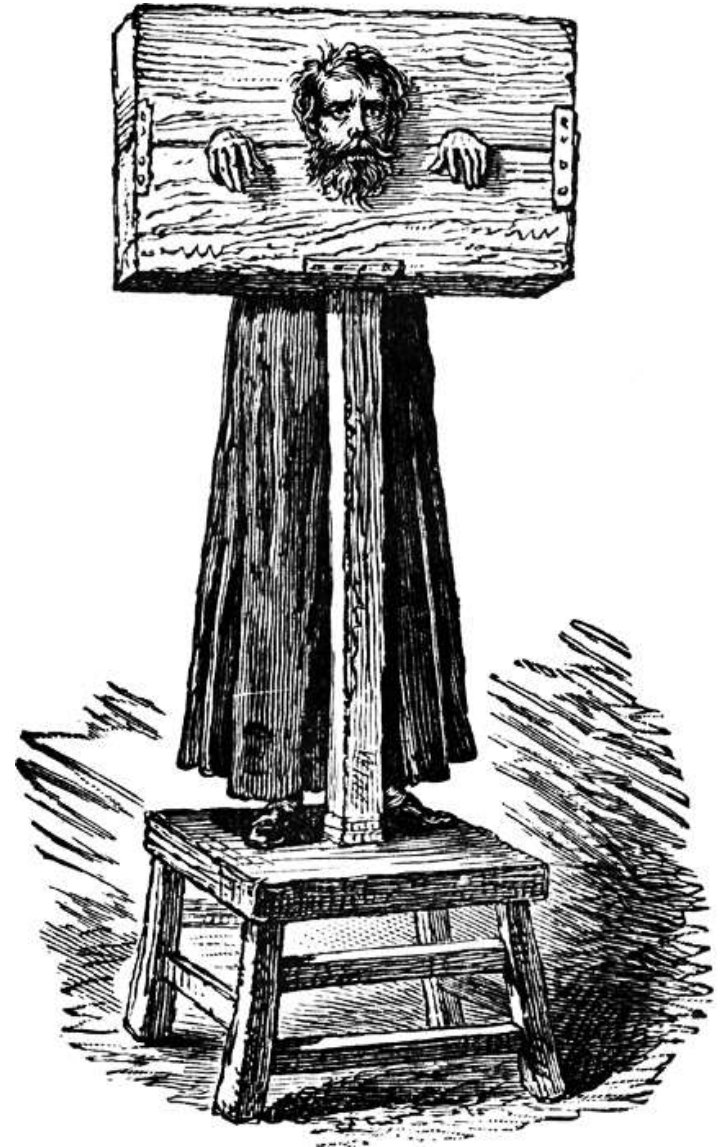
The feudal system became an established way of life throughout much of Europe for over 300 years.



Crime and Punishment

They were usually very harsh. The criminals might be dragged behind a horse, whipped or hanged, depending on the nature of their crime. They could be also locked in pillars.

Peasants who broke the law were tried by their lord in their lord's courts. Their lord had almost all the power over them.



Medieval Women

Medieval women had to work in the fields.

Spinner was always done by women. The wives and daughters of craftsmen were often employed in workshops.



In the medieval society women were inferior than men and when they married they had to give any lands to their husbands. Even they had few rights, they had to work for living .



**Some
pictures of
knights**



A medieval city

