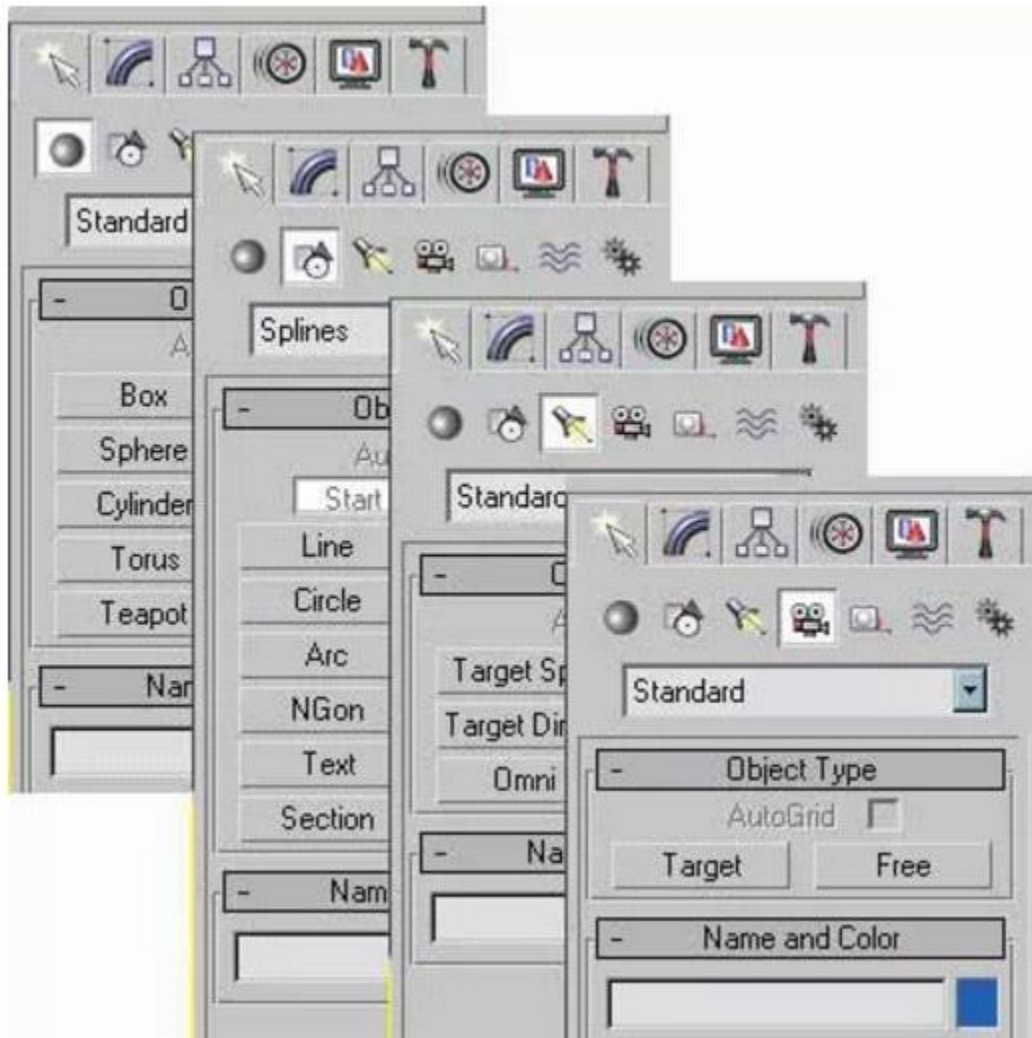


01. Main Tools and the "Create" Panel



Geometry:

Shapes:

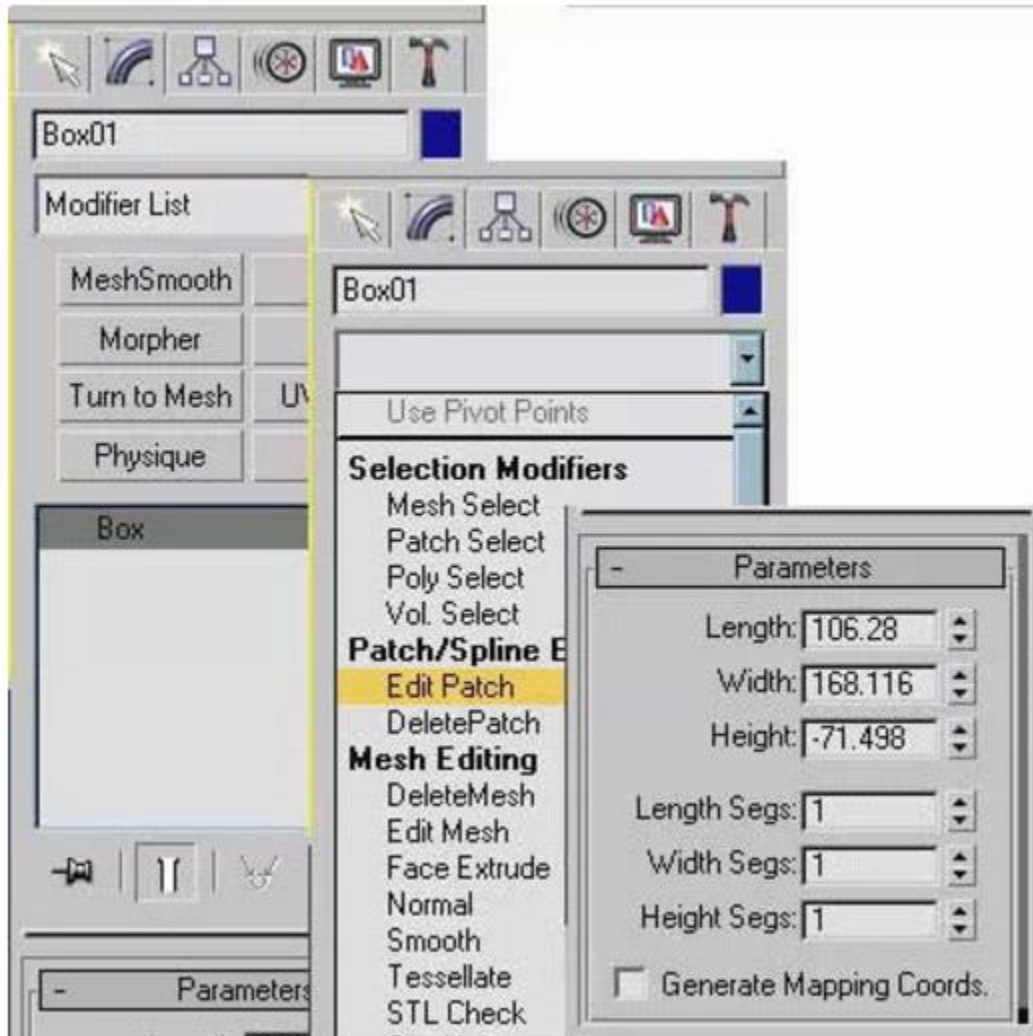
Lights:

Cameras:

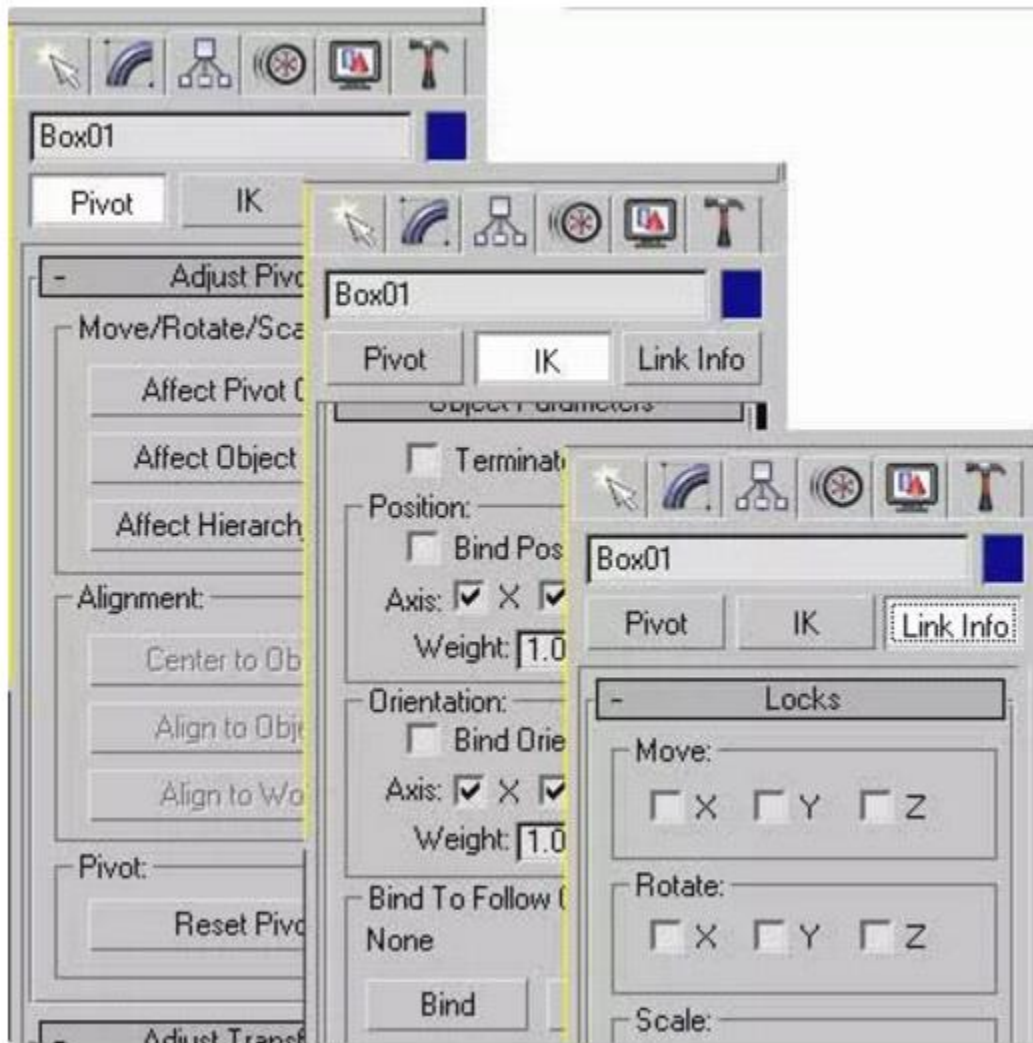
Helper

Space Warps

02. "Modify" Panel



03. "Hierarchy" Panel

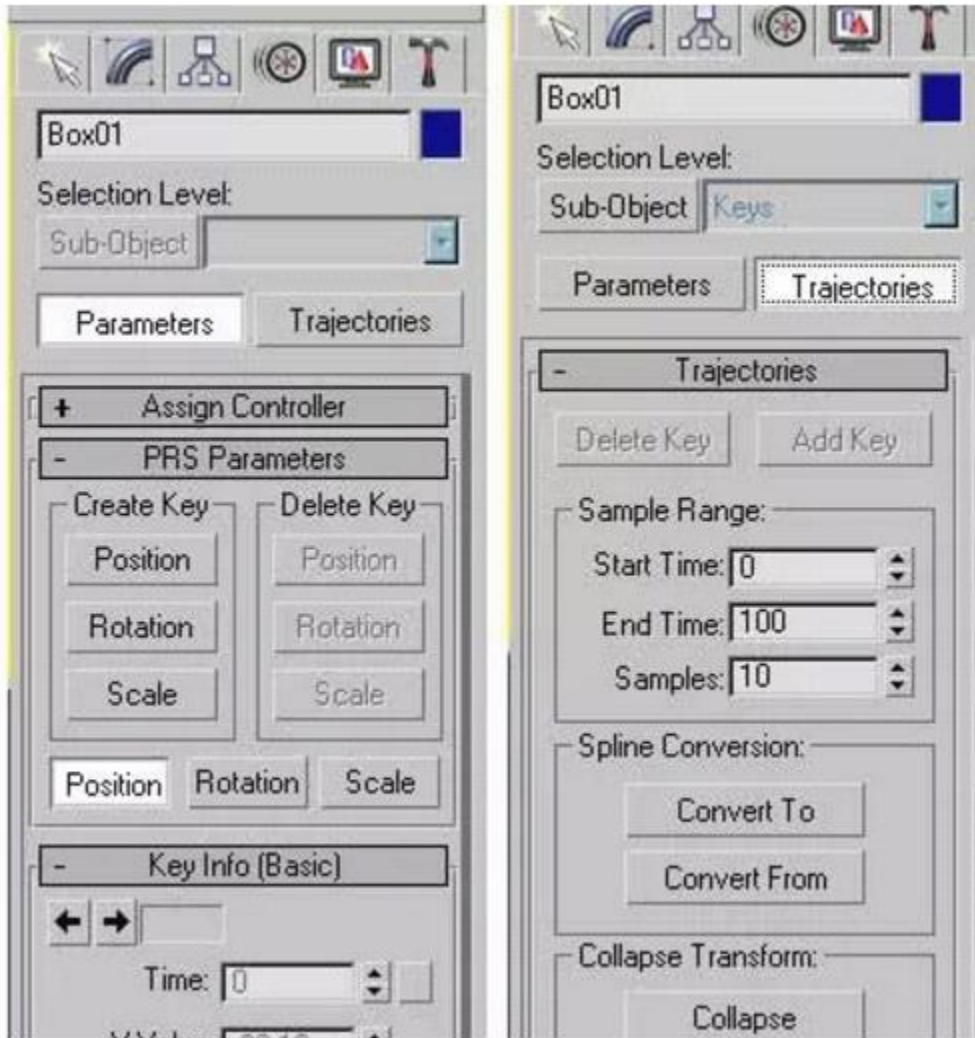


-Pivot

-IK

-Link Info

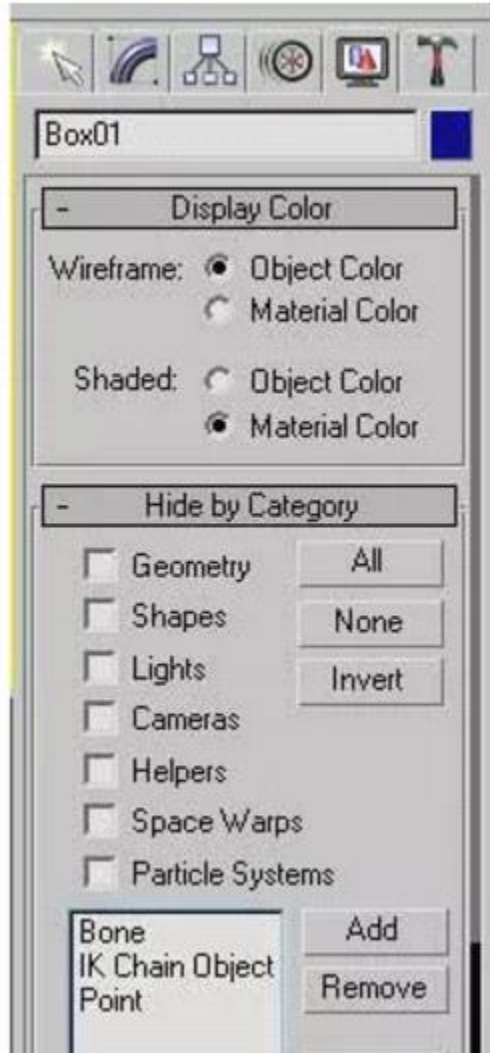
04. "Motion" Panel



-Parameters

-Trajectories

05. "Display" Panel



06. "Utilities" Panel

