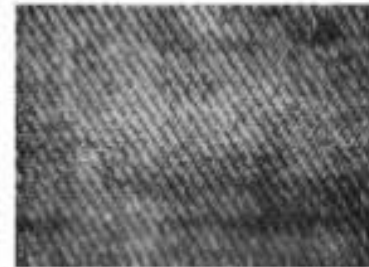
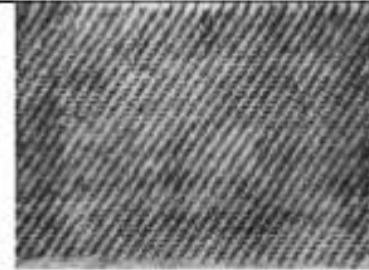
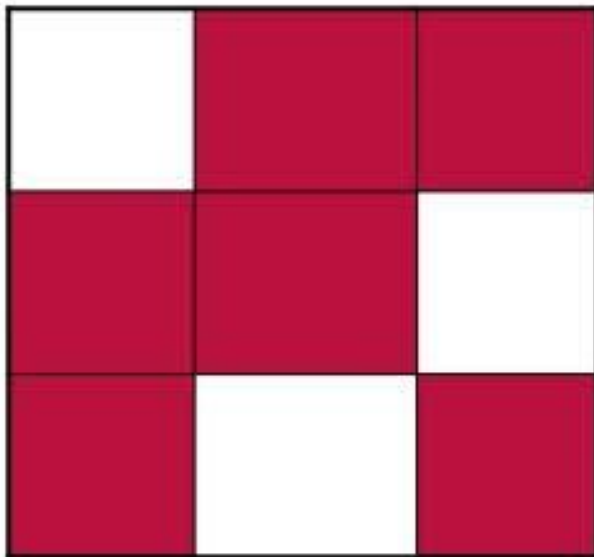


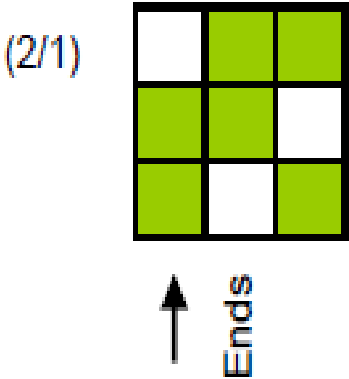
## **Twill weave**

**Twill weave produce diagonal lines in the cloth. Twill weave can be made on any number of threads that exceeds two. Twill lines are formed on both sides of the cloth and direction of the lines may be right or left.**

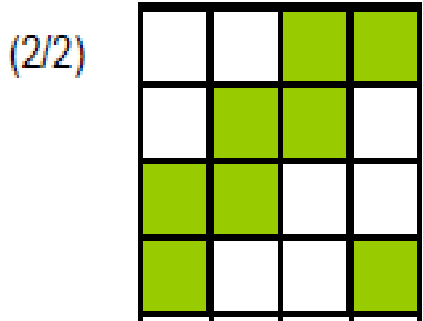
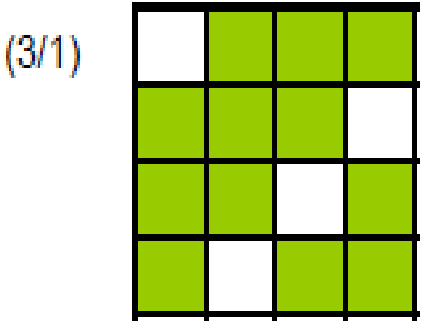


**2/1 Twill  
(shifting warp wise)**

Twill Weave



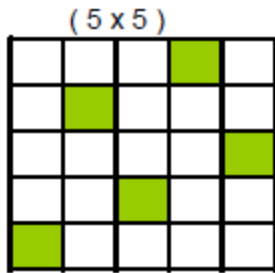
Picks  
←





# SATIN WEAVE

2 Move Satin



↑  
Ends

Picks  
←

3 Move Satin

