

Provincial Bureau of Statistics (Punjab)

1.1 Introduction

Bureau of Statistics (BOS), Government of the Punjab, is the hub of statistical data activity in the province and is responsible for collection, processing and dissemination of statistical data through periodic publications and electronic media.

Bureau of Statistics (BOS), Punjab is an attached department of the Planning and Development Department, Government of the Punjab. Punjab has its Head Office at Lahore, 9 divisional and 7 district field offices throughout the province.

1.2 Director General

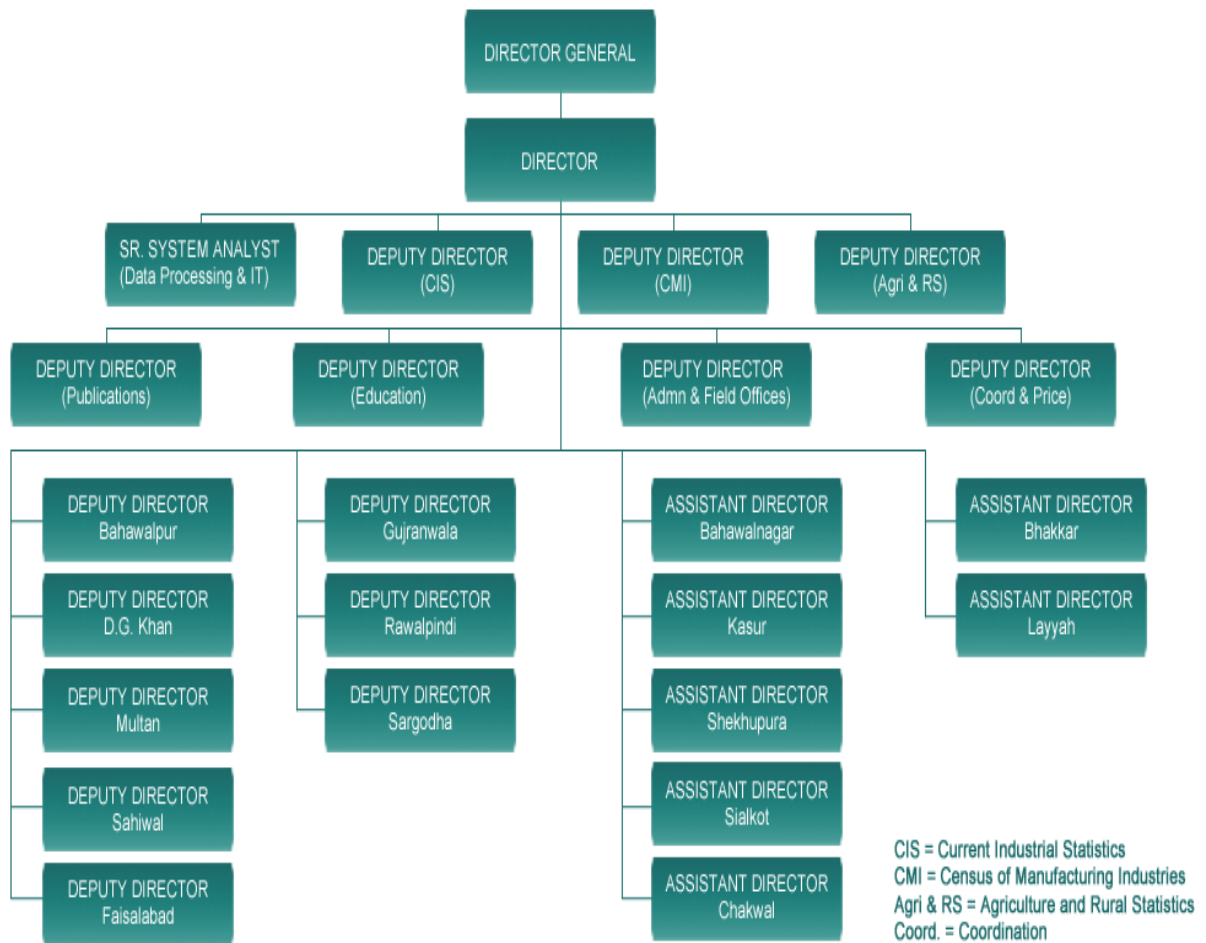
The Director General of Punjab bureau of statistics is currently Sajid Rasul, who has been the Director General of Punjab bureau of statistics since March 2016 and still holds this post.



1.3 Structure

In the structure of the Punjab Bureau of Statistics, the first is a Director General followed by a Director, then the Director of the Director works under four Deputy Directors, one of which is System analysis and one Deputy District is CS. The deputy director is a CMI and a deputy

director is Agriculture. Then there are four deputy tractors, one of whom is a publican from the education department who publishes our situation and one is a field officer and one is a price. Then the District place shoes are Deputy Director of which Bahawalpur, DG Khan, Sahiwal, Sargodha and they have shattered the assistant director who Bahawalnagar, Shekhupura, Kasur, Sialkot, Chakwal and Layyah.



1.4 Facilities

- **Human Resource and Technical Assistance**

Bureau of Statistics (BOS), Punjab provides technical assistance to male and female human resource for conducting surveys throughout the province.

- **Time Series Data for Research**

BOS is open to provide time series data regarding Agriculture, Education, Census of Manufacturing Industries (CMI) and Price. Many students from local and foreign universities use this data for research during their thesis.

- **Managements**

Management of BOS always welcomes students and teachers of different academic institutes to learn and understand the practical work of statistics. Recently, students and teachers of Sargodha University have visited different sections of BOS. Capacity Building initiative of BOS has been appreciated by various stake holders.

1.5 Budget Distribution

Years	Allocation	Modified	Expenditure
2017-18	191,106,000	290,966,000	245,518,614
2016-17	194,621,000	174,883,000	172,955,167
2015-16	184,992,000	163,525,000	159,031,150

2014-15	175,933,000	175,308,000	148,278,965
2013-14	135,410,000	175,308,000	137,096,384

1.6 Activities

- **Crop Acreage and Land Utilization Statistics for Rabi and Kharif**

For each Kharif & Rabi Season, this activity was started during 1961-62.

- **Coverage**

Collection of Crop Acreage Statistics and Land Use Statistics for each Kharif & Rabi from 26,000 Mouzas of Punjab, through Revenue Patwaris by using the Services of Director Land Record.

- **Data Users**

Revenue Department, P&D, Department Ministry of Food, Agriculture & Livestock, (Economic Wing) Islamabad. Federal Bureau of Statistics Crop Reporting Services Agriculture Department for the preparation of Final Crop Production Estimates. For Inclusion in Bureau's Publications:- Punjab Development Statistics Statistical Pocket Book of Punjab Research Institutes.

1.7 Census of Manufacturing Industries (CMI)

Census of Manufacturing Industries (CMI) is being conducted in Pakistan by Provinces under the Industrial Statistics Act, [1942](#).

- **Coverage**

CMI covers all establishments which engaged in manufacturing activities and registered under Section 2(J) of the Factories Act, [1934](#).

- **Census Operations**

FBS is Planning, preparation of questionnaire, tabulation plan, editing & preparation of CMI results at national level.

- **Provincial Directorate of Industries**

Printing and mailing questionnaire to factories, Collection of CMI Returns from the factories and their supply to the Provincial Bureau of Statistics for processing of the data.

- **Provincial Bureau of Statistics**

Provincial bureau of statistics is classified the data with editing and coding CMI returns, Computer processing of CMI Returns and supplying the results to the Federal Bureau of Statistics. Registration of factories under the factories Act, 1934 and supply of updated list of factories to the Provincial Directorates of Industries for conduct of CMI

1.8 Output

Computer printout of tabulated results to be supplied to FBS for their consolidation at national level

- **Data Users**

Federal Bureau of Statistics, Industries Department, Government of the Punjab, Chambers of Commerce, Research Scholars and Students and private departments are using these data.

1.9 Directory of Registered Factories

The Directorate of Labor Welfare, Punjab is responsible for registration and de-registration of the factories under the Factories Act, [1934](#) and the Bureau prepares and updates a Directory of Registered Factories in Punjab, The Directory contains information on factories listed district/tehsil and industry wise, The Directory also contains the information on fixed assets size and employment size etc. This directory supplemented with the latest information available with

the Directorate of Industries is used as a Frame for the CMI and Directory of registered factories is released annually.

1.10 Census of Educational Institutions

Data is collected from about one thousand Inter/Degree (Arts & Science) Colleges/Higher Secondary Schools and [319](#) Professional Colleges, Poly Technical Institutes, Colleges of Technology, Commercial Training Institutes, Teacher's Training Institutes, Vocational Institutes and Universities etc. The output of this census is the publication on statistics of Intermediate and Degree colleges in the Punjab with Name and address of Institution, Teaching staff strength and Class-wise enrolment.

- **Data Users**

Planning and development department, Government of the Punjab Education department, Government of the Punjab research scholars and students

1.11 Other Activities

Dissemination of Statistical Information through various periodic publications/reports, Coordination with the Federal Bureau of Statistics under the General Statistics Act [1975](#), Bureau's participation in various surveys conducted by National and International Agencies, Special Time Limit Assignments entrusted to the Bureau by the Planning & Development Department.