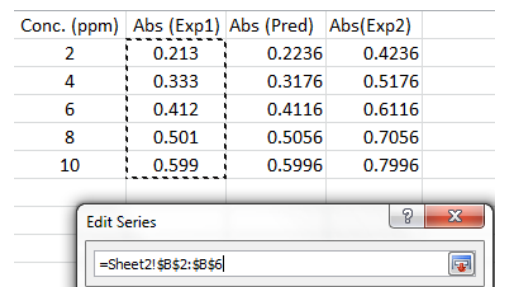
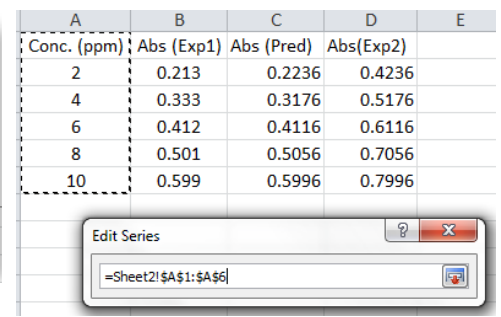
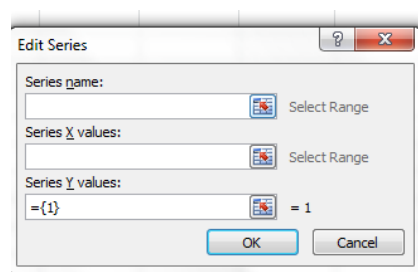
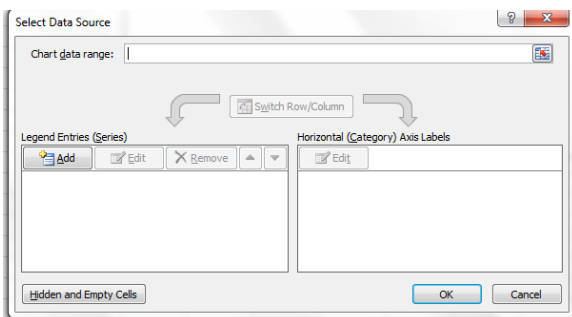
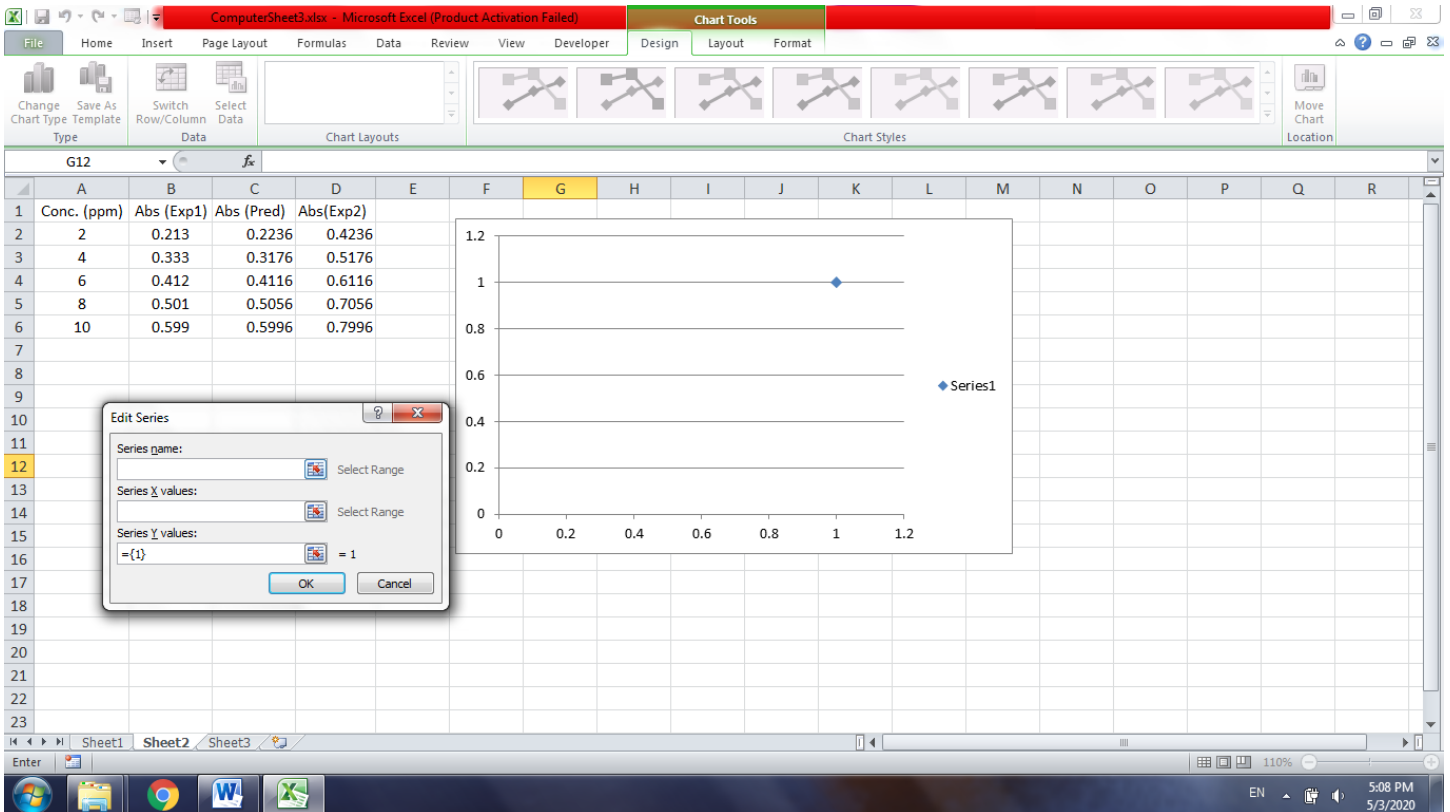
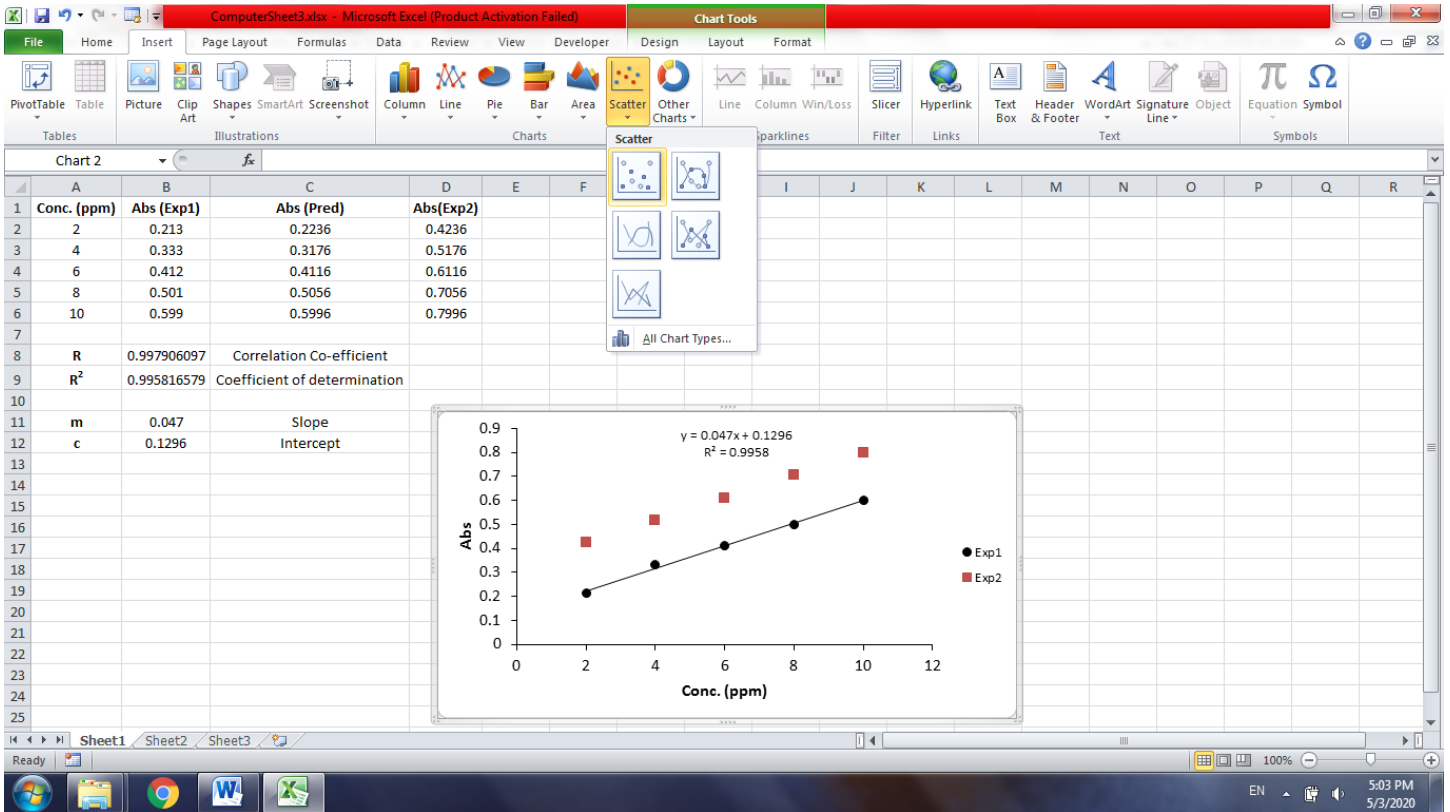
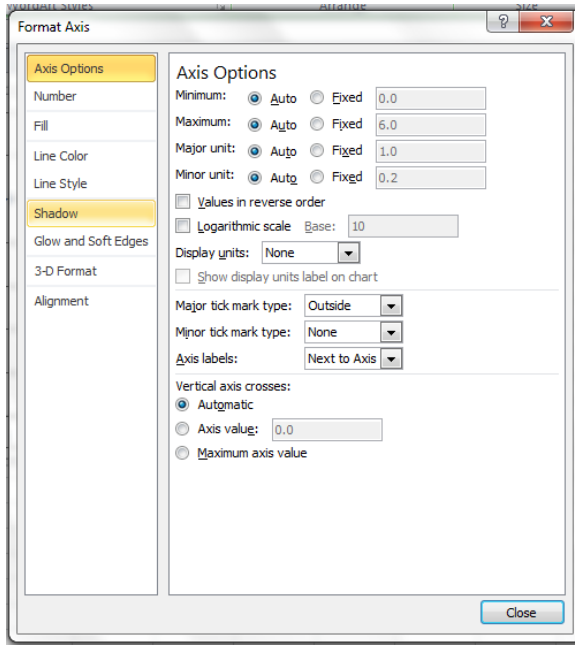
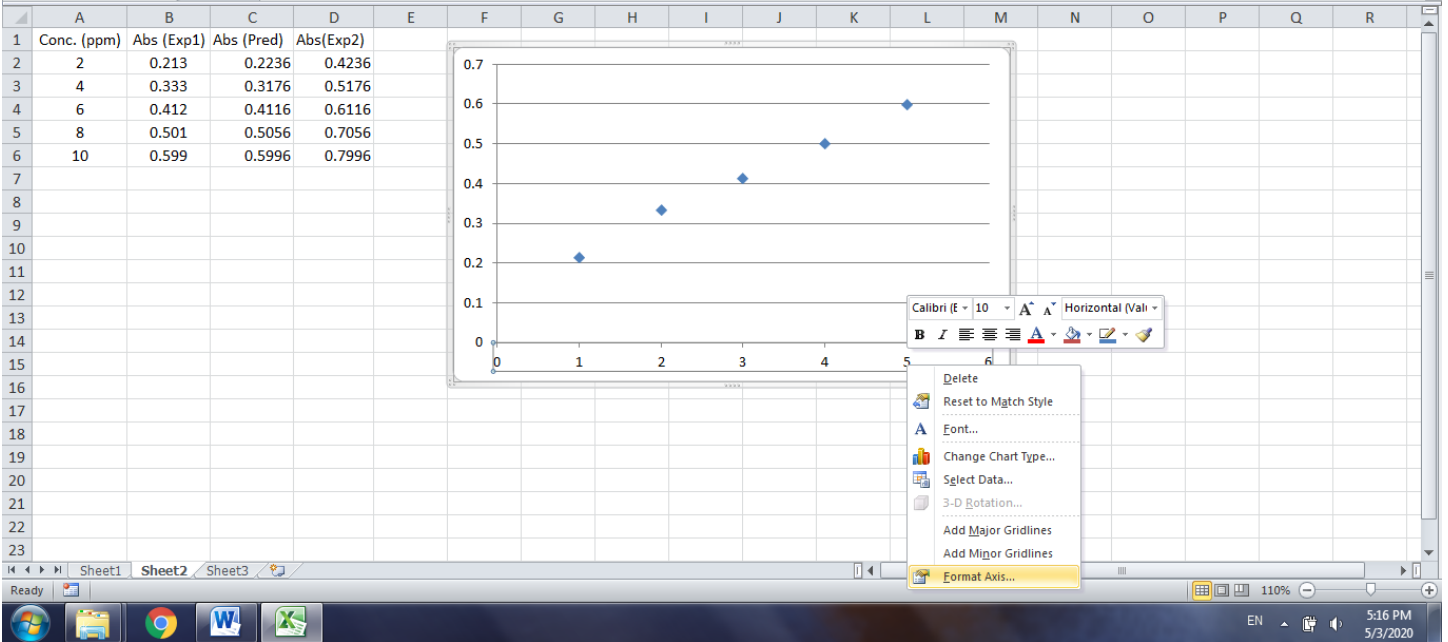
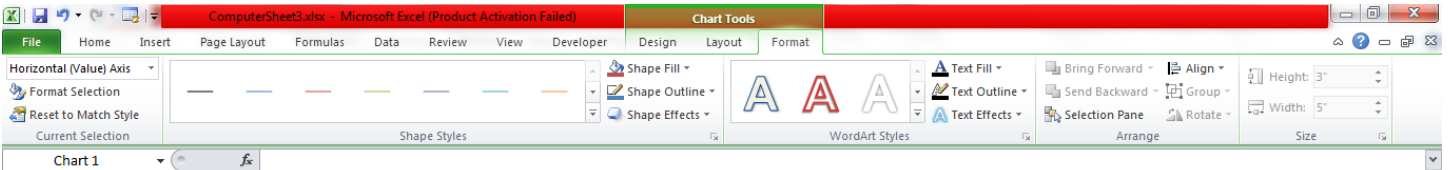
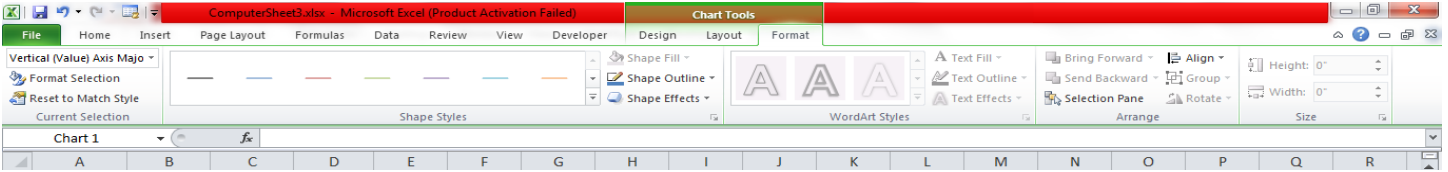
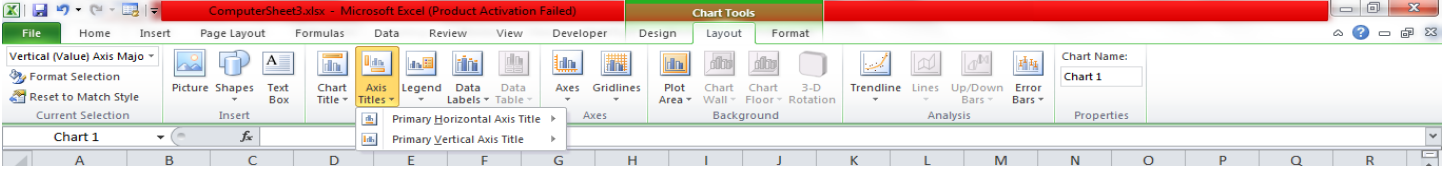
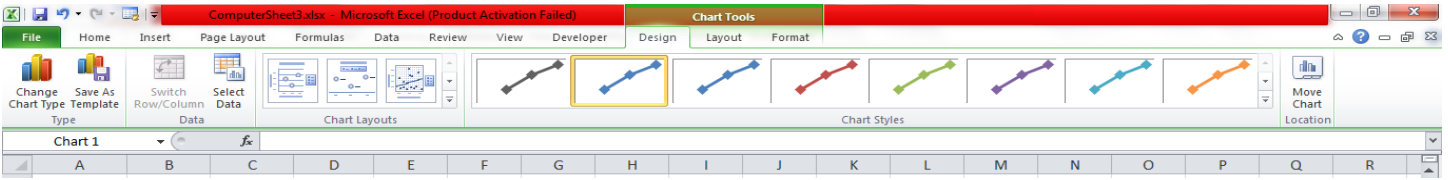


5. Insert Charts (Graphing)

(i) XY-Scatter Chart





1	Conc. (ppm)	Abs (Exp1)	Abs (Pred)	Abs(Exp2)
2	2	0.213	0.2236	0.4236
3	4	0.333	0.3176	0.5176
4	6	0.412	0.4116	0.6116
5	8	0.501	0.5056	0.7056
6	10	0.599	0.5996	0.7996

ComputerSheet3.xlsx - Microsoft Excel (Product Activation Failed)

Chart Tools: Design, Layout, Format

Series 1: Format Selection, Reset to Match Style, Current Selection

Chart 1: $=SERIES(,Sheet2!$A$1:$A$6,Sheet2!$B$2:$B$6,1)$

1	Conc. (ppm)	Abs (Exp1)	Abs (Pred)	Abs(Exp2)
2	2	0.213	0.2236	0.4236
3	4	0.333	0.3176	0.5176
4	6	0.412	0.4116	0.6116
5	8	0.501	0.5056	0.7056
6	10	0.599	0.5996	0.7996

ComputerSheet3.xlsx - Microsoft Excel (Product Activation Failed)

Chart Tools: Design, Layout, Format

Series 1 Trendline 1: Format Selection, Reset to Match Style, Current Selection

Chart 1: $=SERIES(,Sheet2!$A$1:$A$6,Sheet2!$B$2:$B$6,1)$

1	Conc. (ppm)	Abs (Exp1)	Abs (Pred)	Abs(Exp2)
2	2	0.213	0.2236	0.4236
3	4	0.333	0.3176	0.5176
4	6	0.412	0.4116	0.6116
5	8	0.501	0.5056	0.7056
6	10	0.599	0.5996	0.7996

Format Trendline

Trendline Options

Trend/Regression Type

- Exponential
- Linear
- Logarithmic
- Polynomial Order: 2
- Power
- Moving Average Period: 2

Trendline Name

- Automatic: Linear (Series1)
- Custom:

Forecast

Forward: 0.0 periods

Backward: 0.0 periods

Set Intercept = 0.0

Display Equation on chart

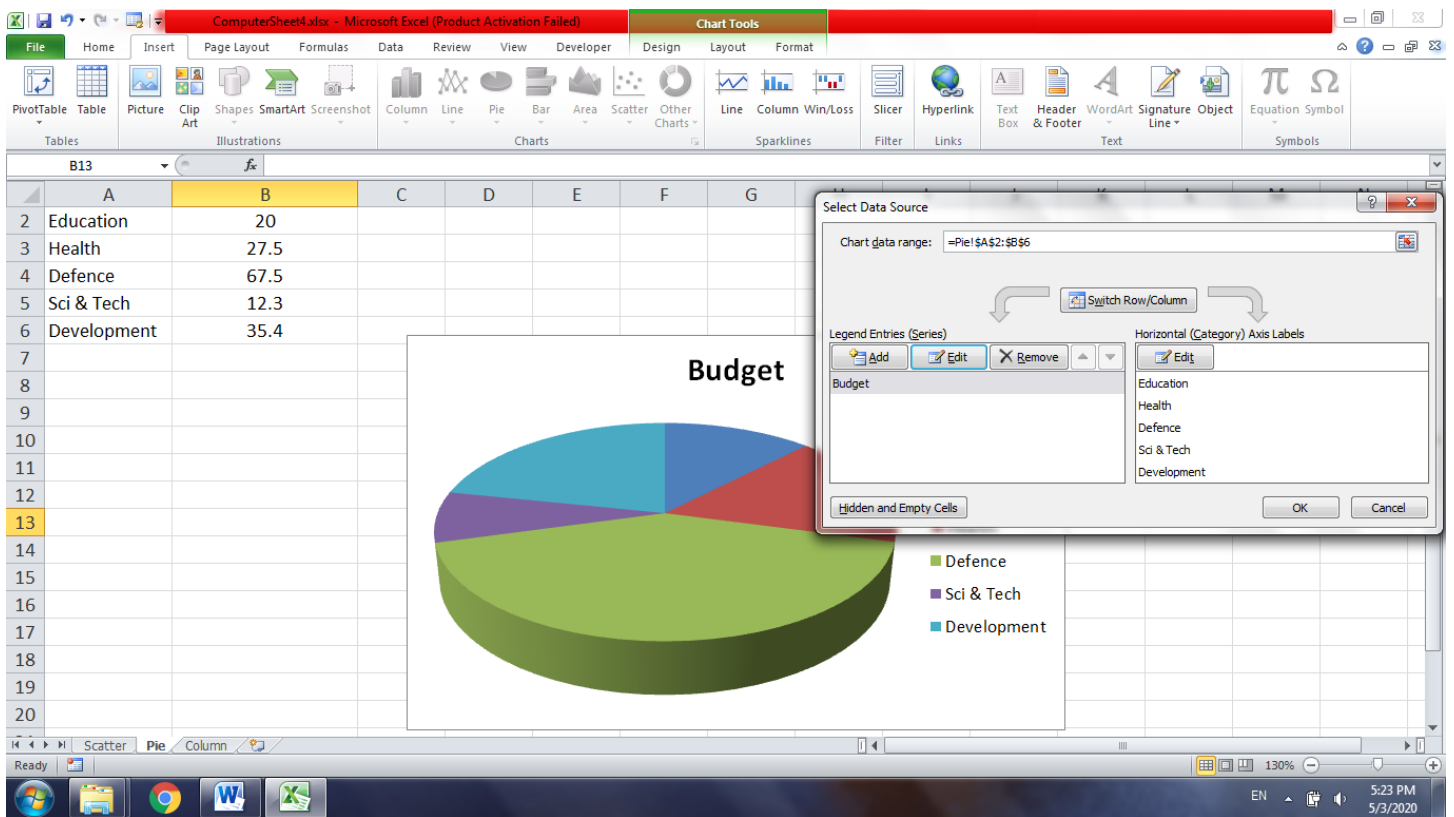
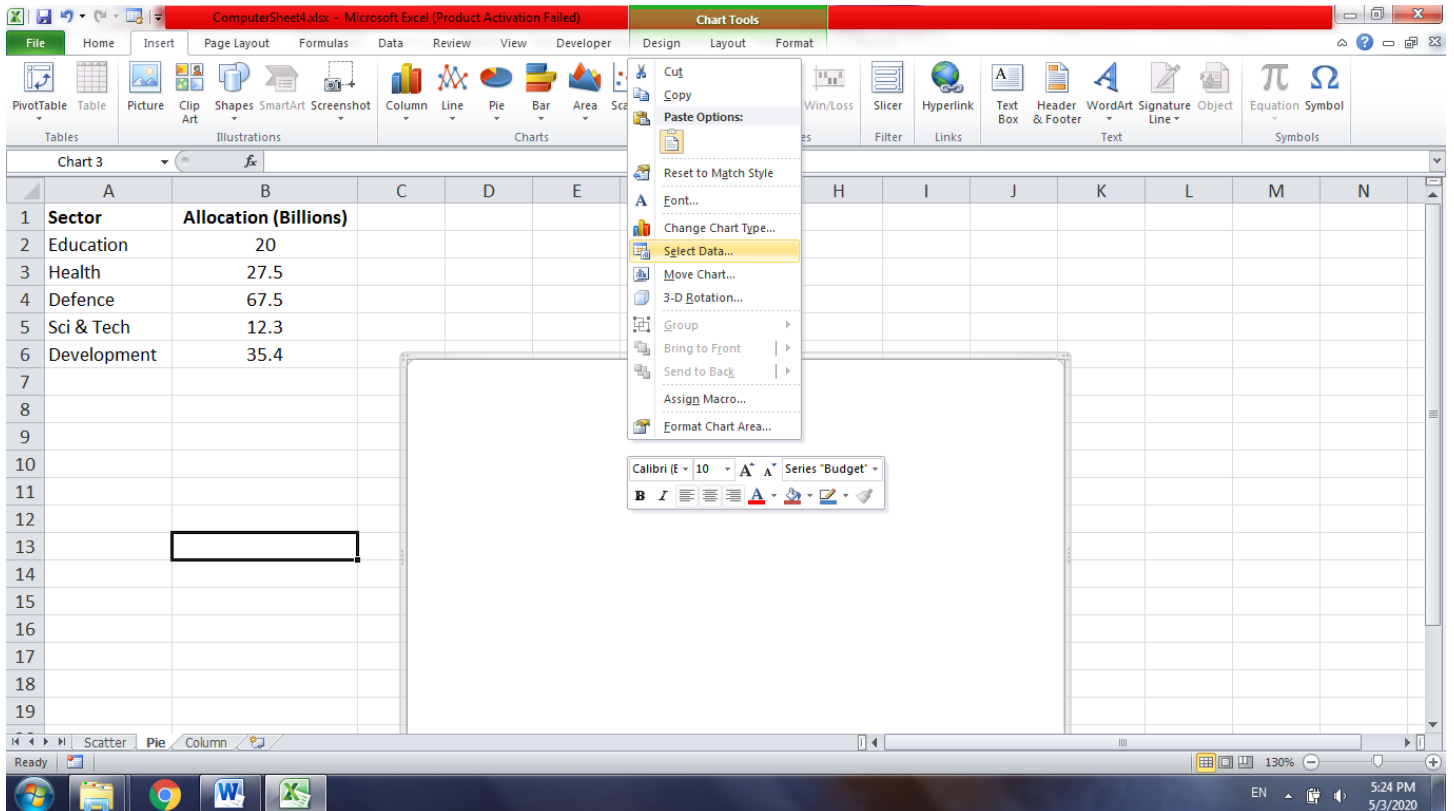
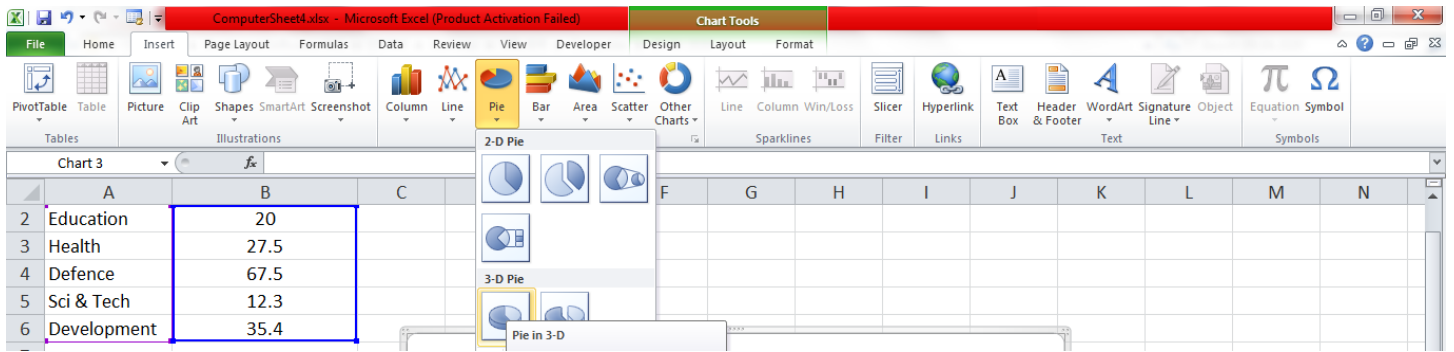
Display R-squared value on chart

Close

Ready

5:20 PM 5/3/2020

(ii) Pie-Chart



(ii) Column-Chart

