

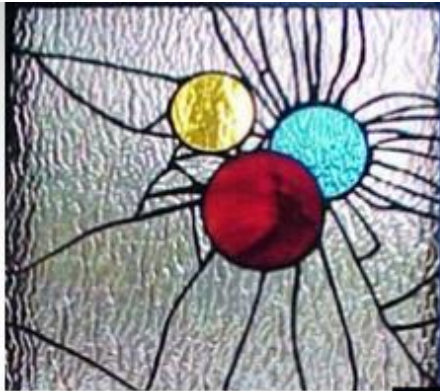
Art Deco

# What is Art Deco?

- ⦿ Taking its name from the Paris Exposition Internationale des Arts Decoratifs of 1925, Art Deco is a style associated with the late 1920s and early 1930s with emphasis on richly-coloured and geometric pattern, new materials and styles and a decorative approach to modernism.

# Style . . .

- geometric and angular shapes
- chrome, glass, shiny fabrics, mirrors and mirror tiles
- stylised images of aeroplanes, cars, cruise liners, skyscrapers
- nature motifs - shells, sunrises, flowers
- theatrical contrasts - highly polished wood and glossy black lacquer mixed with satin and furs



Look at these curved and geometric patterns based on Art Deco. Look at the use of bold colour.



**Art Deco**  
**1234567890**

# Influences . . .

- art nouveau - deco kept the nature motifs of its predecessor but discarded its flowing organic shapes and pastels for bolder materials and colours such as chrome and black
- cubism -painters such as Picasso were experimenting with space, angles and geometry
- early Hollywood - the glamorous world of the silver screen filtered through to design using shiny fabrics, subdued lighting, and mirrors. Cocktail cabinets and smoking paraphernalia became highly fashionable

# CHARACTERISTICS

- **MATERIALS**

- ART DECO MATERIALS INCLUDED STUCCO, CONCRETE, AND SMOOTH-FACED STONE. STEEL AND ALUMINUM WERE OFTEN USED ALONG WITH GLASS BLOCKS AND DECORATIVE OPAQUE PLATE GLASS.

- **ROOF**

- ART DECO DESIGNERS ADORNED FLAT ROOFS WITH PARAPETS, SPIRES, OR TOWER-LIKE CONSTRUCTS TO ACCENTUATE A CORNER OR ENTRANCE. DECORATIVE CURIOSITIES SUCH AS CHIMNEYS WERE ADDED TO FURTHER ENHANCE THE DESIGN.

# ART DECO ARCHITECTURE IN UNITED STATE



- The Empire State Building is a 103-story skyscraper located in Midtown Manhattan, New York City. Its name is derived from the nickname for New York, the Empire State. It stood as the world's tallest building for nearly 40 years (from early 1932 until 1970). Following the September 11 attacks in 2001, (terrorist attack) the Empire State Building was again the tallest building in New York, until 2012.
- The Empire State Building is generally thought of as an American cultural icon. It is designed in the distinctive Art Deco style and has been named as one of the Seven Wonders of the Modern World by the American Society of Civil Engineers. It was designated as a National Historic Landmark in 1986.

Empire State Building



# ART DECO INTERIOR DESIGN



- COLOR: THE MOST POPULAR COLORS WERE GLOSSY BLACK, CHROME, SILVER, YELLOW AND RED. YOU COULD ALSO USE CREAM, OFF WHITES, BEIGE, OYSTER AND SHADES OF GREEN.
- THE LIVING ROOM BELOW IS A STUNNING EXAMPLE OF DECO INTERIORS. THE COLORS, TONES AND SLICK STYLE REPRESENT THIS ERA BEAUTIFULLY. CLASSIC AND DEFINITELY TASTEFULLY PUT TOGETHER.



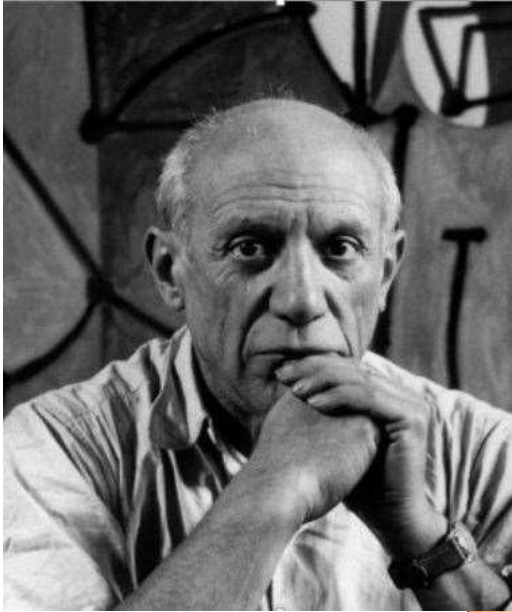
# ART DECO ARTIST

- TAMARA DE LEMPICKA
- PABLO PICASSO
- PIERRE BRISSAUD
- JOSEPH CSAKY
- JOHN AUSTEN
- ROLAND ANSIEAU
- ALEKSANDRA EKSTER

# TAMARA DE LEMPICKA

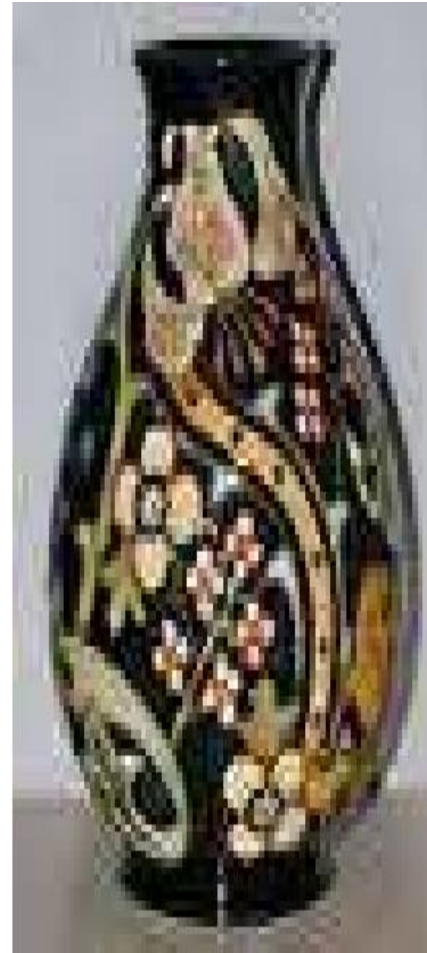


# PABLO PICASSO





# ART DECO PORCELAIN



# Characteristic of Art Deco Jewelry



- The Art Deco period is one of the most popular design periods in jewelry's history. The style reflected the gaudy and playful attitudes of the era and gave birth to forms and motifs that continue to live on today. While the Art Deco period covers the early 1920s until 1960s. Art Deco jewelry design is defined by geometric forms and bold colors. Diamonds were extremely popular in the period and were often accompanied by the bright colors of rubies (red), sapphires (blue) and emeralds (green). Some of the great jewelry houses, including Cartier, Tiffany and Van Cleef &

# CHARACTERISTIC OF ART DECO FURNITURE



- CHAIRS
- ART DECO CHAIRS TYPICALLY FEATURE CURVED LINES AND ORGANIC, HUMANLIKE FORMS. THESE CURVES ARE OFTEN JUXTAPOSED AGAINST ANGULAR LINES, CREATING THE ATTRACTIVE CONTRAST THAT WAS CHARACTERISTIC OF ART DECO DESIGN.



- CABINETS
- ART DECO CABINETS ARE GENERALLY VERY LARGE, RIGID, AND OFTEN COMPOSED OF LACQUERED WOOD. MANY CRAFTSMEN LEFT THE WOOD NATURAL TO SHOW THE DISTINCTIVE GRAINS OF EXOTIC TIMBERS.