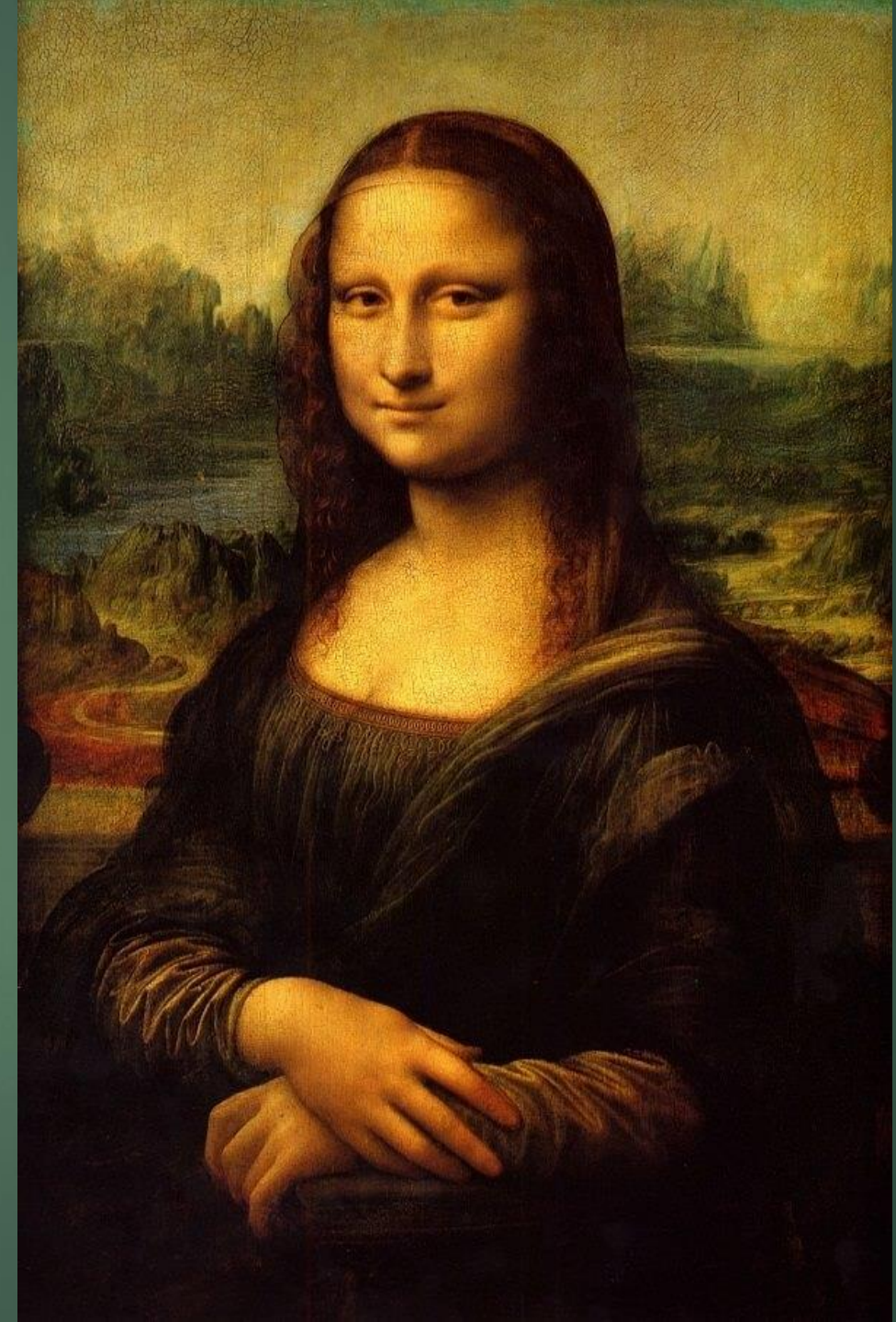


# Mona Lisa Portrait Presentation

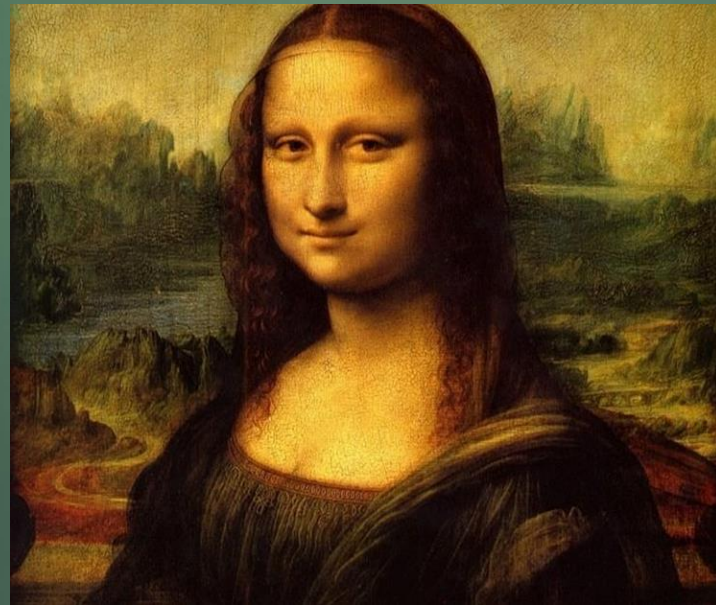
BY AWAIS NAQVI

# Mona Lisa by Leonardo Da Vinci

- ▶ Mona Lisa, also known as La Gioconda, is the wife of Francesco del Giocondo. This painting is painted as oil on wood. The original painting size is 77 x 53 cm (30 x 20 7/8 in) and is owned by the Government of France and is on the wall in the Louvre in Paris, France.
- ▶ This figure of a woman, dressed in the Florentine fashion of her day and seated in a visionary, mountainous landscape, is a remarkable instance of Leonardo's sfumato technique of soft, heavily shaded modeling. The Mona Lisa's enigmatic expression, which seems both alluring and aloof, has given the portrait universal fame.



# Facts You Might not Know about the Masterpiece





# Some historians believe Mona Lisa is a Self-Portrait of Leonardo da Vinci.

- ▶ Leonardo da Vinci died in 1519, and he is buried at a French castle. Italy's National Committee for Cultural Heritage is undertaking an investigation, and plans to dig up his skull. They want to rebuild Leonardo's face, using CSI-style technology. Will he resemble the mysterious Mona Lisa?



# It is a painting but not a canvas.

- ▶ Da Vinci's famous masterpiece is painted on a poplar plank. Considering he was accustomed to painting larger works on wet plaster, a wood plank does not seem that outlandish. Canvas was available to artists since the 14th century, but many Renaissance masters preferred wood as a basis for their small artworks.

# A thief made her famous.

- ▶ Although in the art world, the painting had always been an acknowledged masterpiece, it wasn't until it was stolen in the summer of 1911 that it would capture the attention of the general public. Newspapers spread the story of the crime worldwide. When the painting finally returned to the Louvre two years later, practically the whole world was cheering.



# She cannot be bought or sold

- ▶ Truly priceless, the painting cannot be bought or sold according to French heritage law. As part of the Louvre collection, "Mona Lisa" belongs to the public, and by popular agreement, their hearts belong to her.

The end