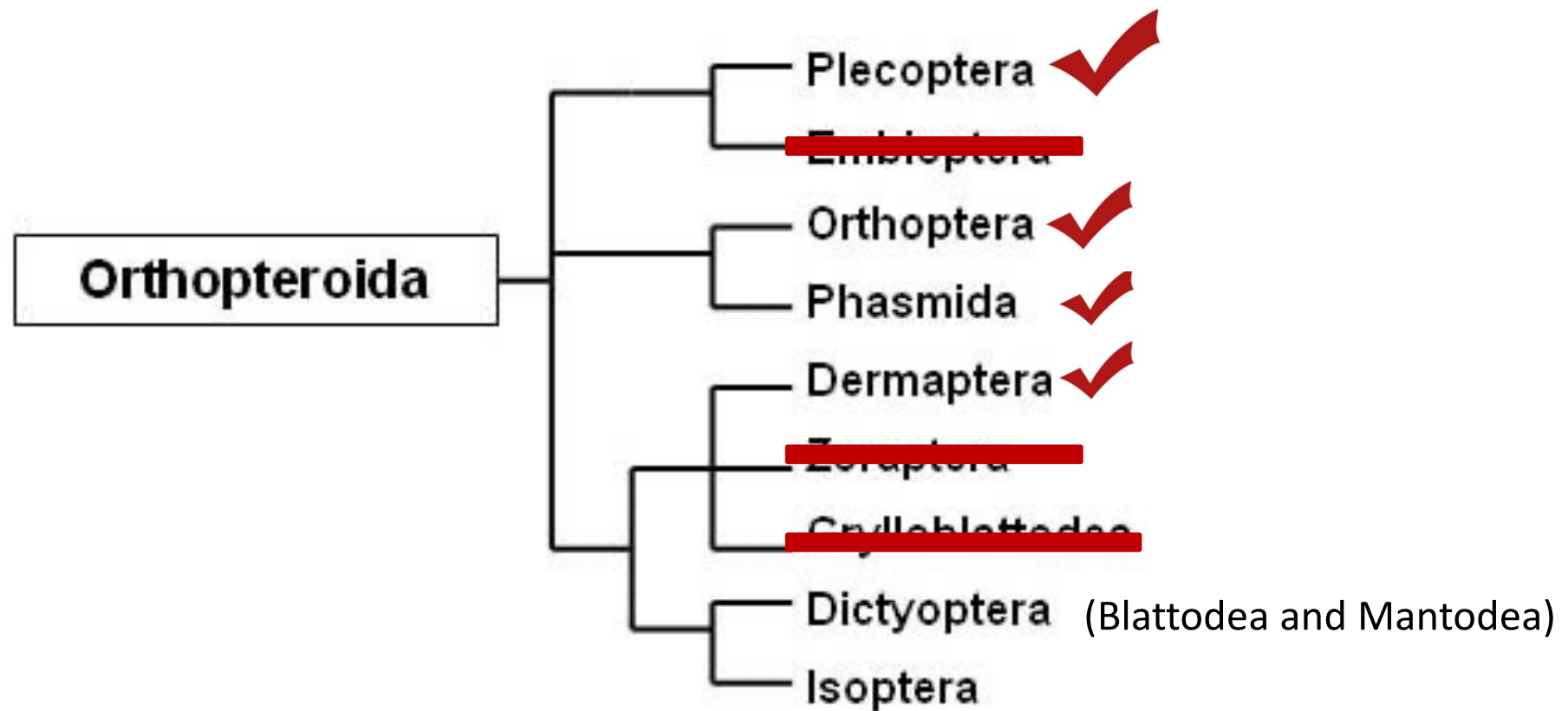


- Pterygota: Winged True Insects
  - Paleoptera: Ephemeroptera and Odonata
  - Neoptera: wings fold flat onto back
    - Exopterygota (simple metamorphosis)
      - Orthopteroida (mandibulate mouthparts, large anal lobe in the hind wing)



ORDER: Mantodea – Mantids

two families, but one is limited to Florida

1. Mantidae – Mantids

*Stagomantis carolina*





*Gonatista grisea*  
Lichen mimic native to  
southeastern U.S.



*Ootheca* – egg case



Chinese mantis – *Tenodera aridifolia*

## ORDER: Blattodea – Roaches

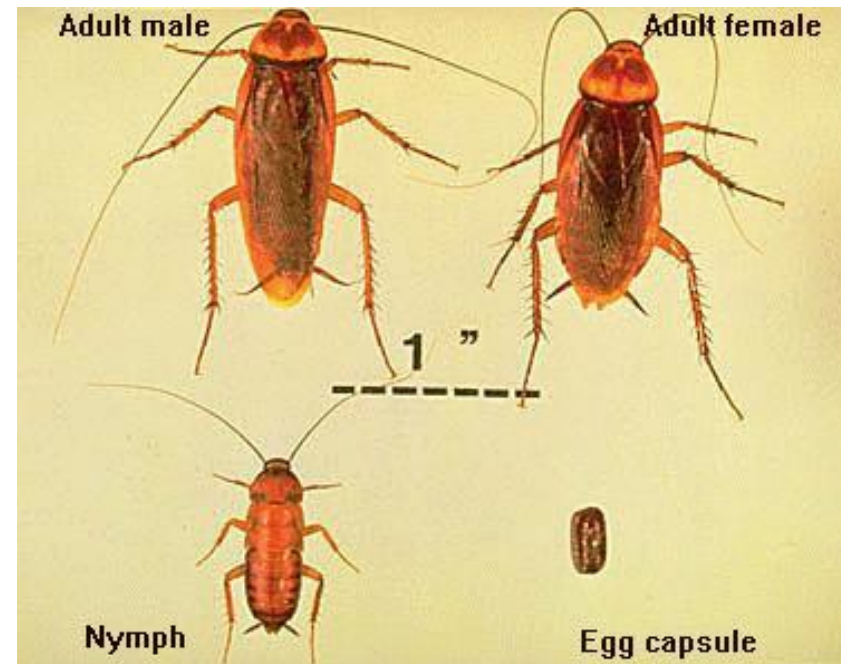
- head is concealed from above by an enlarged pronotum
- legs unmodified for jumping, grasping
- usually **no stridulating organs**
- tarsi 5-segmented
- wings generally present, but may be reduced
- eggs also in oothecae
- omnivorous



## ORDER: Blattodea – Roaches

### 1. Blattidae

- ventroposterior margin of front femora with spines of equal length, or decreasing in length distally
- female subgenital plate divided lengthwise; male styli similar
- generally large (25mm)
- includes the Oriental cockroach (*Blatta orientalis* L.) and American cockroach (*Periplaneta americana* (L.)) . The American is large (2 in.) – “Palmetto Bugs” – (from Africa)



ORDER: Blattodea – Roaches (~50)

1. Blattidae
2. Blatellidae
  - spines on front femora quite variable
  - smaller
  - subgenital plate of female entire (not divided)

German cockroach  
*Blattella germanica* (L.)



Wood roach  
*Parcoblatta* spp.



Brown-banded cockroach  
*Supella longipalpa* (Fabricius)



## ORDER: Blattodea – Roaches (~50)

1. Blattidae
2. Blatellidae
3. Blaberidae

- includes the largest roaches in U. S.
- spines on front femora just at tip, or also three on ventromedial margin
- no oothecae; they retain it in uterus and give live birth

Madiera cockroach

*Rhyparobia maderae*





- Pterygota: Winged True Insects
  - Paleoptera: Ephemeroptera and Odonata
  - Neoptera: wings fold flat onto back
    - Exopterygota (simple metamorphosis)
      - Orthopteroida (mandibulate mouthparts, large anal lobe in the hind wing)

