

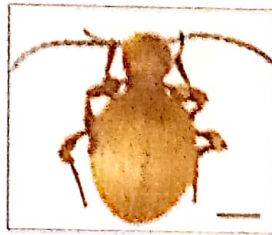
# Identifying families of beetles of stored products

## Adult beetles

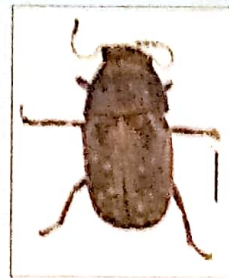
Families of beetles can be identified using Figure E or the Key to adult beetles (on page 14).



Anobilidae, Anobilineae  
Anobidid beetles  
See page 18



Anobilidae, Ptininae  
Spider beetles  
See page 22



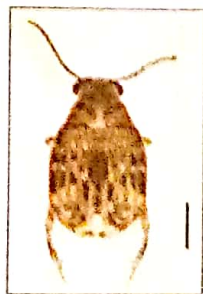
Anthribidae  
Anthribid beetles  
See page 27



Bostrichidae  
Bostrichid beetles  
See page 30



Cleridae  
Clerid beetles  
See page 36



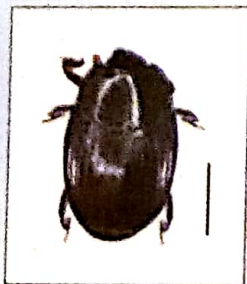
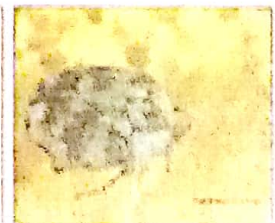
Chysomelidae,  
Bruchinae  
(Bruchidae)  
Bruchid beetles  
See page 39



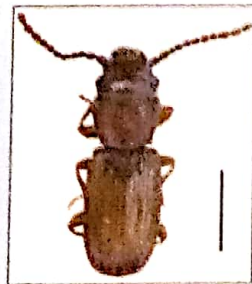
Curculionidae  
Weevils  
See page 46



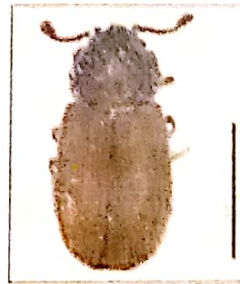
Dermestidae  
Dermestid beetles  
See page 52



Histeridae  
Histerid beetles  
See page 72



Laemophloeidae  
(Cucujidae)  
Flat grain beetles  
See page 75



Cryptophagidae  
Minute mould  
beetles  
See page 79



Lathrididae  
Minute mould  
beetles  
See page 79



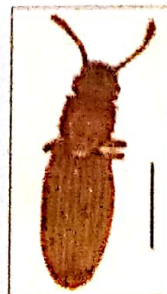
Lophocateridae  
Lophocaterid  
beetles  
See page 81



Mycetophagidae  
Hairy fungus beetles  
See page 83



Nitidulidae  
Sap beetles  
See page 85



Silvanidae  
Silvanid beetles  
See page 89

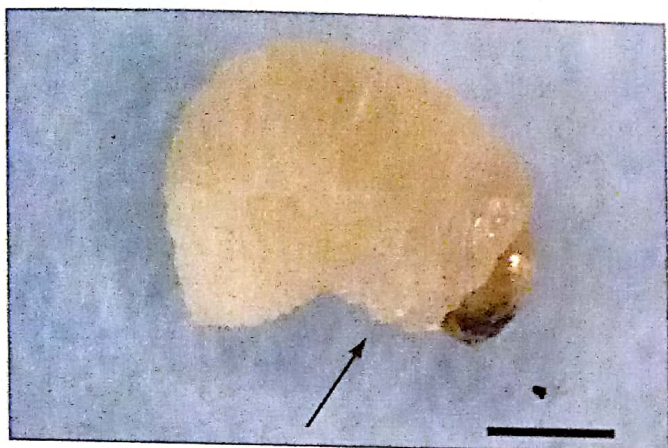


Tenebrionidae  
Tenebrionid beetles  
See page 93



Trogossitidae  
Trogossitid beetles  
See page 119

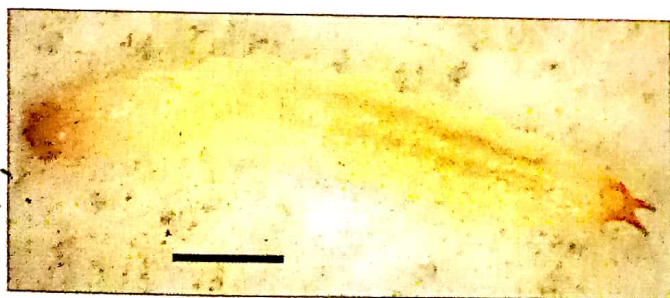
A comprehensive key to larvae of beetles associated with stored products is provided in Anderson (1987).



**Apodous:** legless, immobile, lives internally within foodstuff.



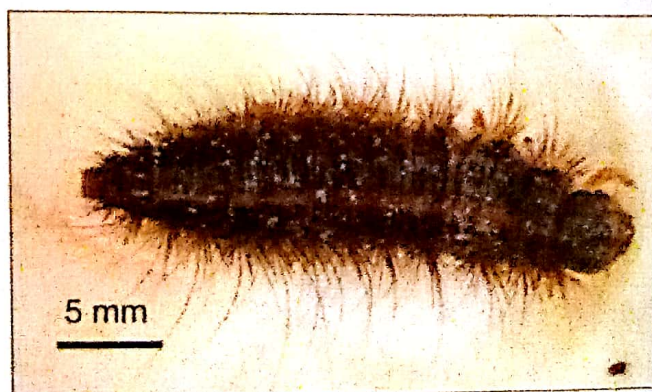
**Scarabaeiform:** effectively immobile when mature, develops into characteristic 'C' shape as it matures, thorax enlarged relative to abdomen, legs partly or full developed. Lives internally within foodstuff for all or all but initial stage of life.



Left: **Campodeiform:** elongate flattened body with well developed legs, cuticle usually very pale and translucent, head capsule and/ or last abdominal segment may be pigmented. Very active, lives freely within commodity.



**Elateriform:** body is long and cylindrical, cuticle leathery, legs relatively short. Active, lives freely within commodity.



**Eruciform:** larvae oval or elongate, species very 'hairy' some with characteristic hastisetae. Active, lives freely within commodity.

Figure F. Larval forms of beetles