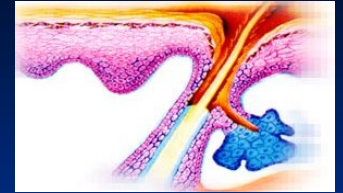




# BASIC SKIN LESIONS

By  
DR.ZAIB AHMAD  
Dermatology Department

# What is dermatology



The branch of medicine concerned with the  
diagnosis & treatment of

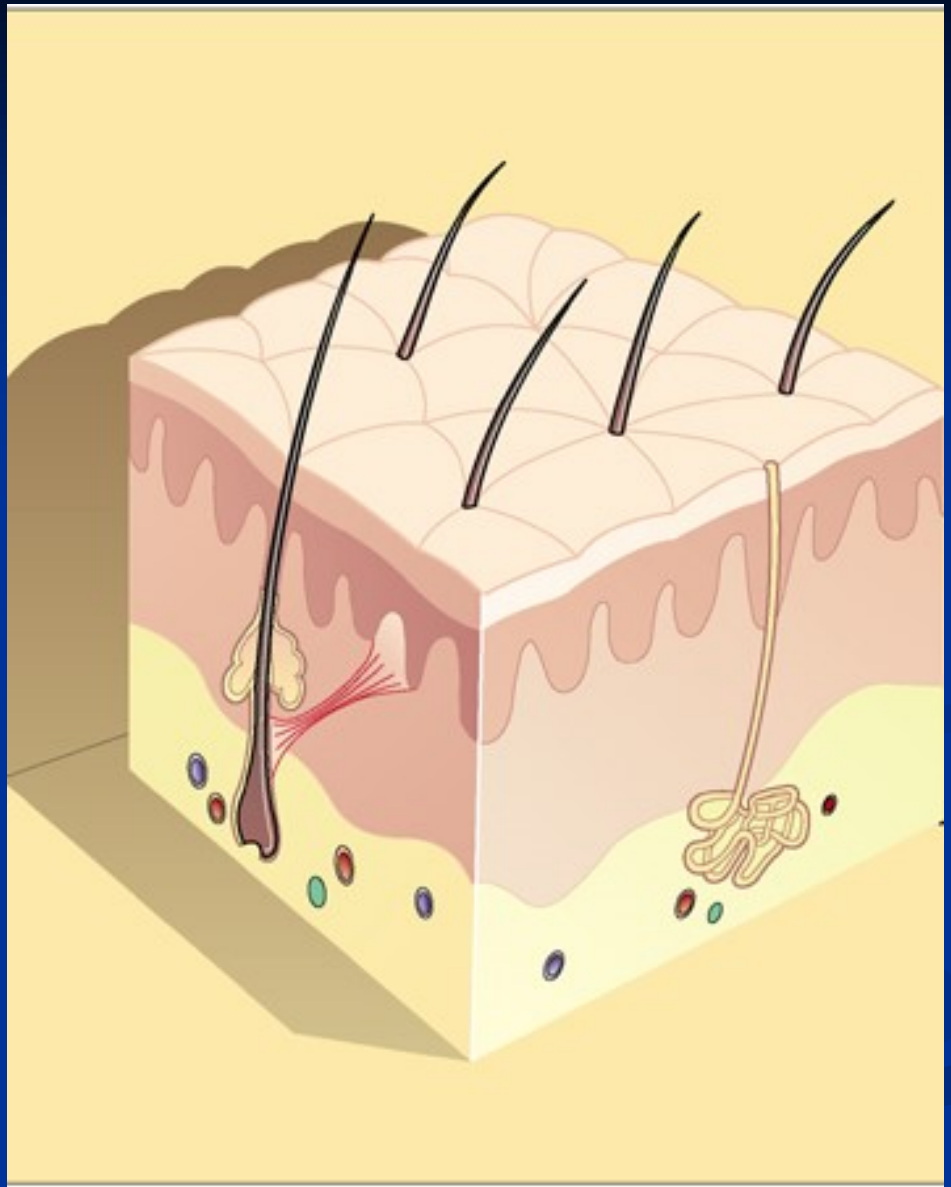
*Skin diseases*

# Gross Skin Structure

Epidermis

Dermis

Subcutaneous Fat

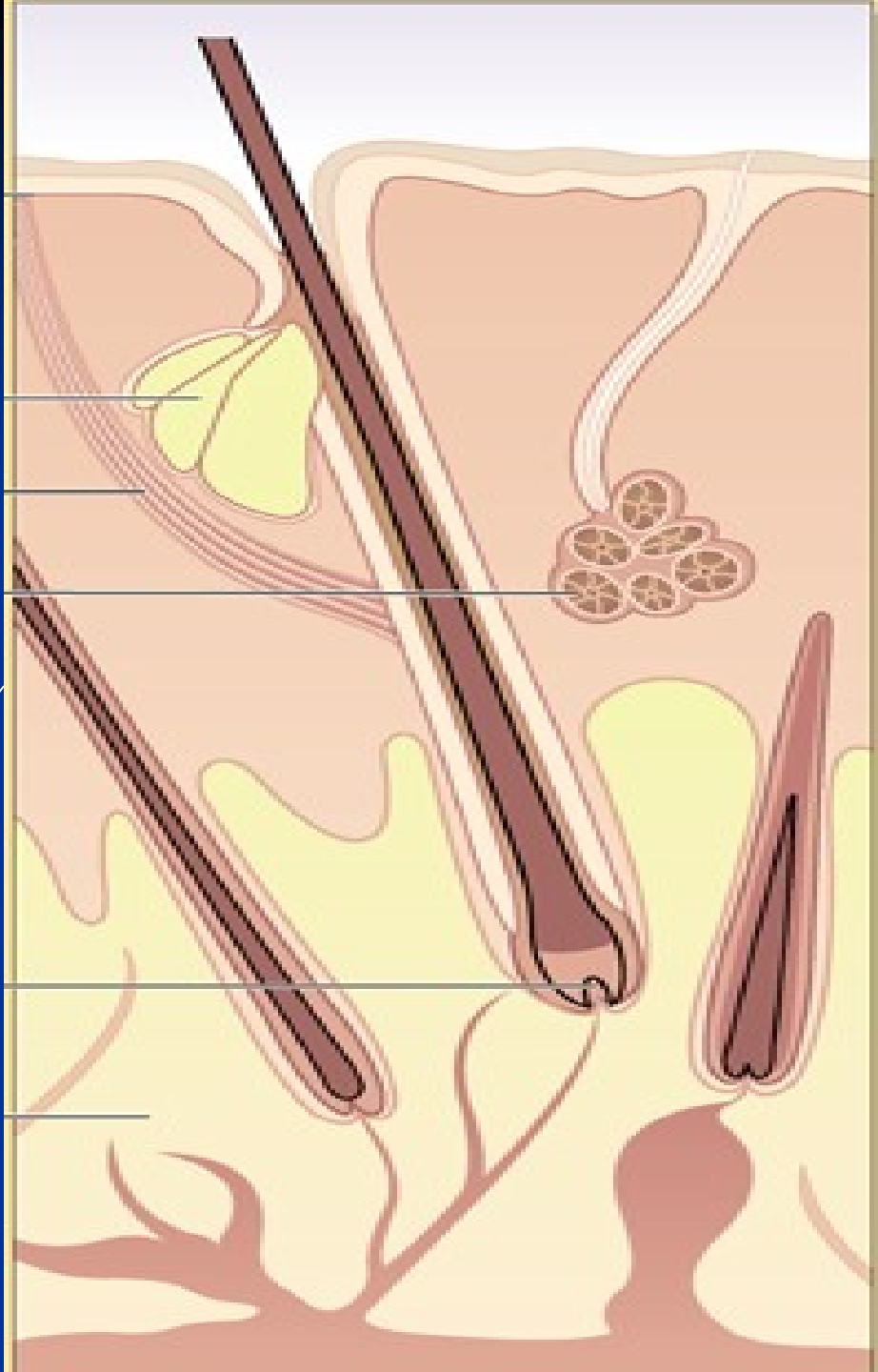


# Skin Appendages

Sebaceous Glands

Sweat Glands

Hair Follicles



# Epidermis

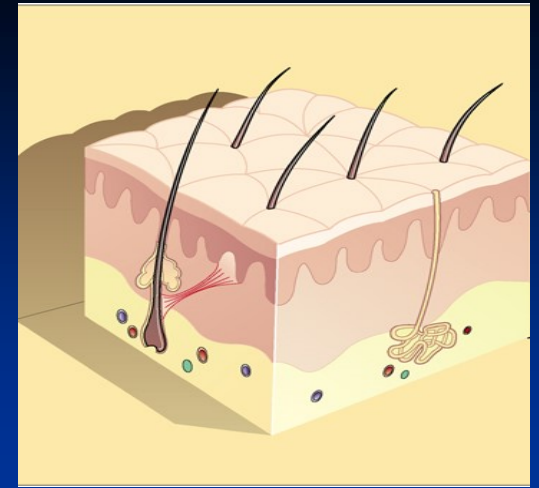
Stratum Basale

Stratum Spinosum

Stratum Granulosum

Stratum Corneum



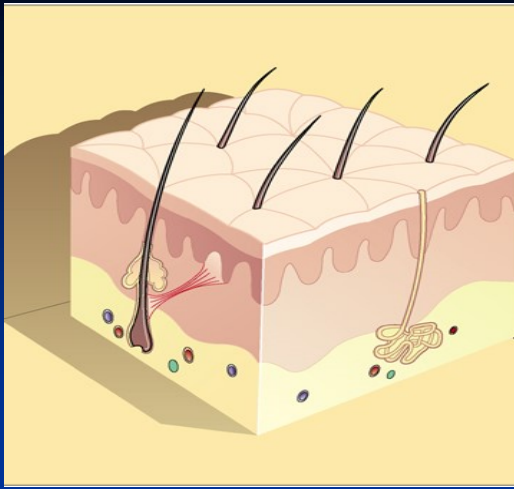


# Skin

Largest Body Organ

*Having*

Critically Important Functions



## Functions

- Barrier
- Temperature Regulation
- Mechanical
- Immunological
- Sensory & autonomic
- Vit. D synthesis
- Cosmetic



# Basic skin lesions

- Macule
- Patch
- Papule
- Nodule
- Plaque
- Hyperpigmentation
- Hypopigmentation
- Vesicle
- Bulla
- Pustule
- Scab

# Basic skin lesions

- Scale
- Exfoliation
- Excoriation
- Lichenification
- Erosion
- Ulcer
- Scar
- Erythema
- Purpura
- Burrow
- Comedone
- Weal

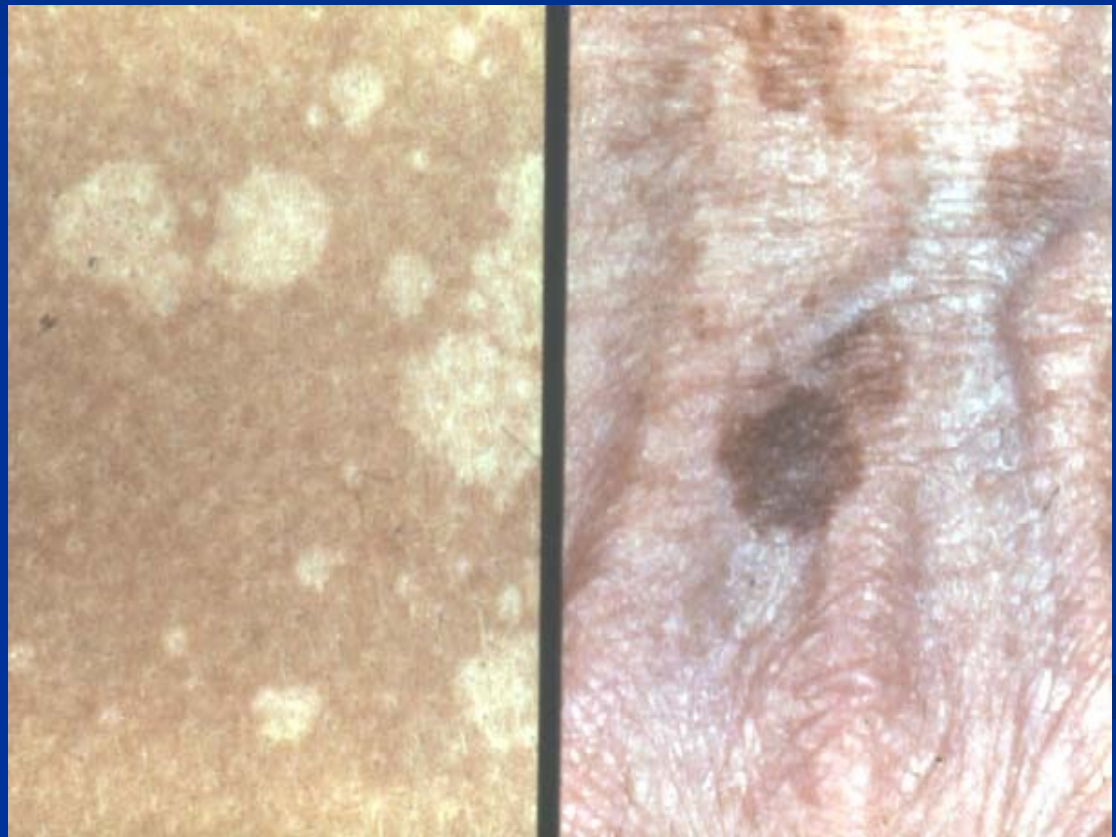
# MACULE / PATCH

## MACULE (Spot)

- Change in the color
- Not palpable
- $< 1$  cm

## PATCH

- Change in the color
- Not palpable
- $> 1$  cm



# Hyperpigmentation

- Increased pigmentation or darkening of skin.



# Hypopigmentation

- Decreased pigmentation



# PAPULE

- Palpable lesion, solid in consistency, <1 cm



# Nodule

- Palpable lesion, solid in consistency,  $>1$  cm, circumscribed



# Plaque

- Palpable lesion, solid in consistency, >2 cm, flat topped





# VESICLE / BULLA / SCAB

## VESICLE (Blister)

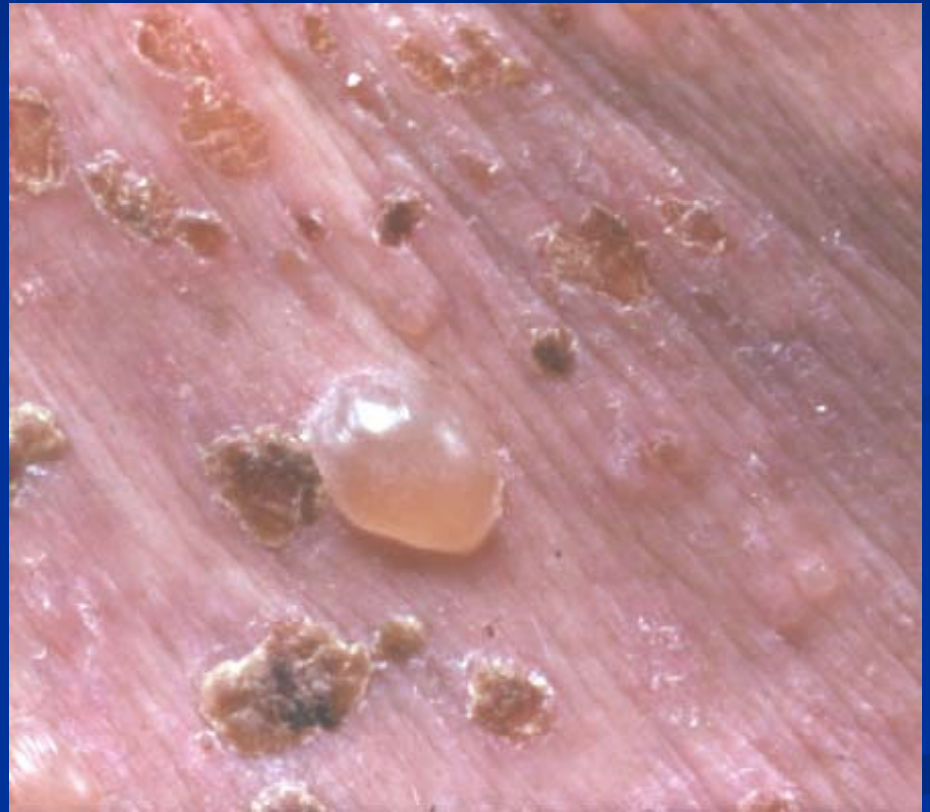
- Fluid filled cavity
- < 1 cm

## BULLA

- Fluid filled cavity
- > 1 cm

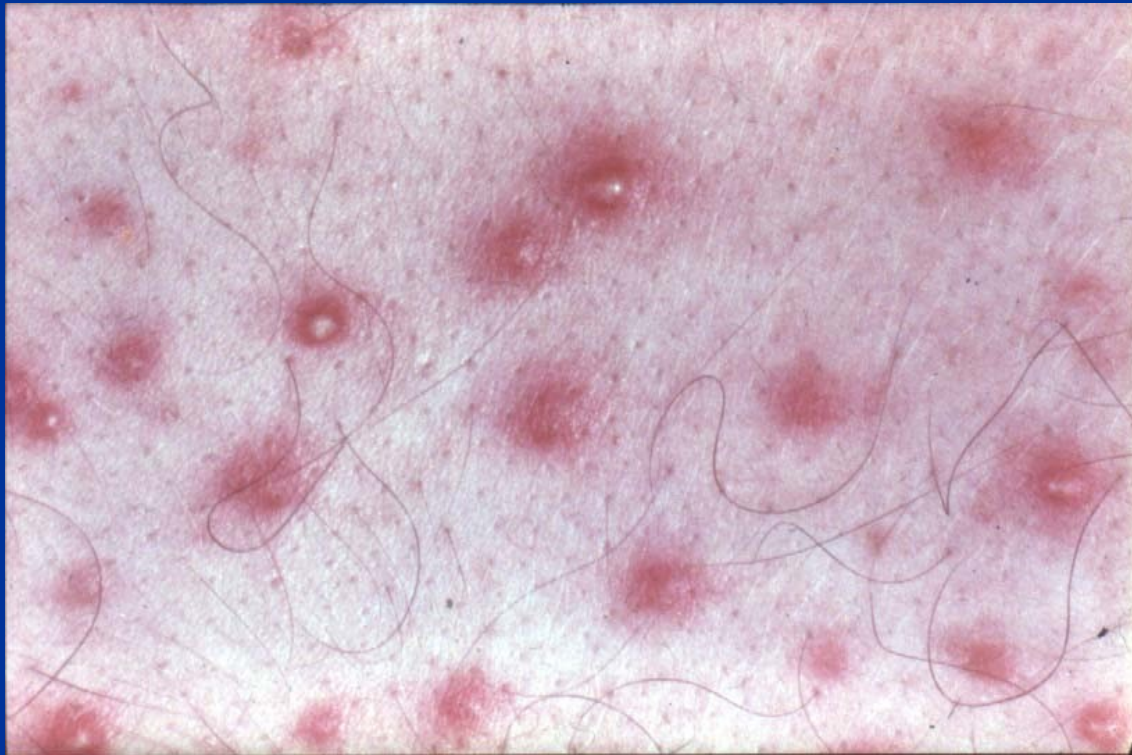
## SCAB

- Dried up fluid



# Pustule

- Pus containing cavity.



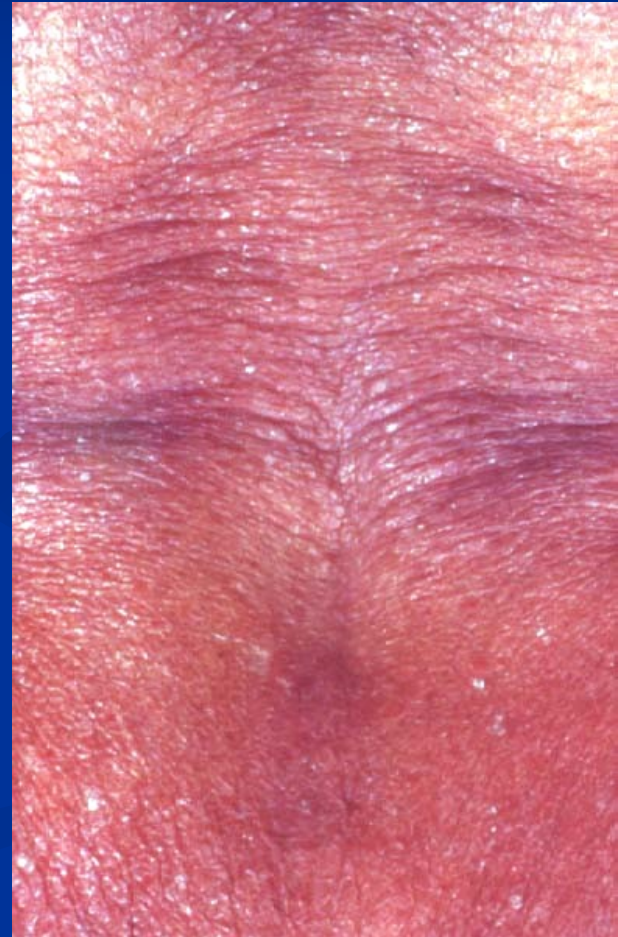
# Scale / Exfoliation

## Scale

- Separated part of upper most layer of skin

## Exfoliation

- Scaling over large area of body



# Exfoliation

- Scaling over a large area of the body.



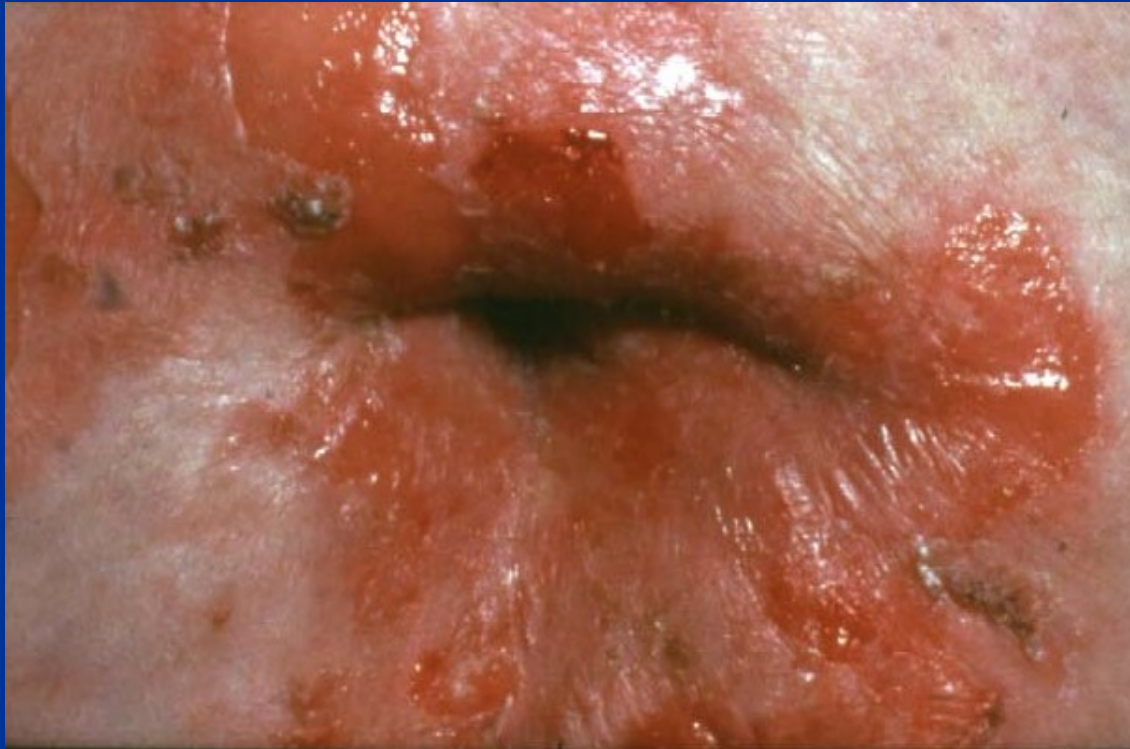
# Excoriation

- Scratch mark



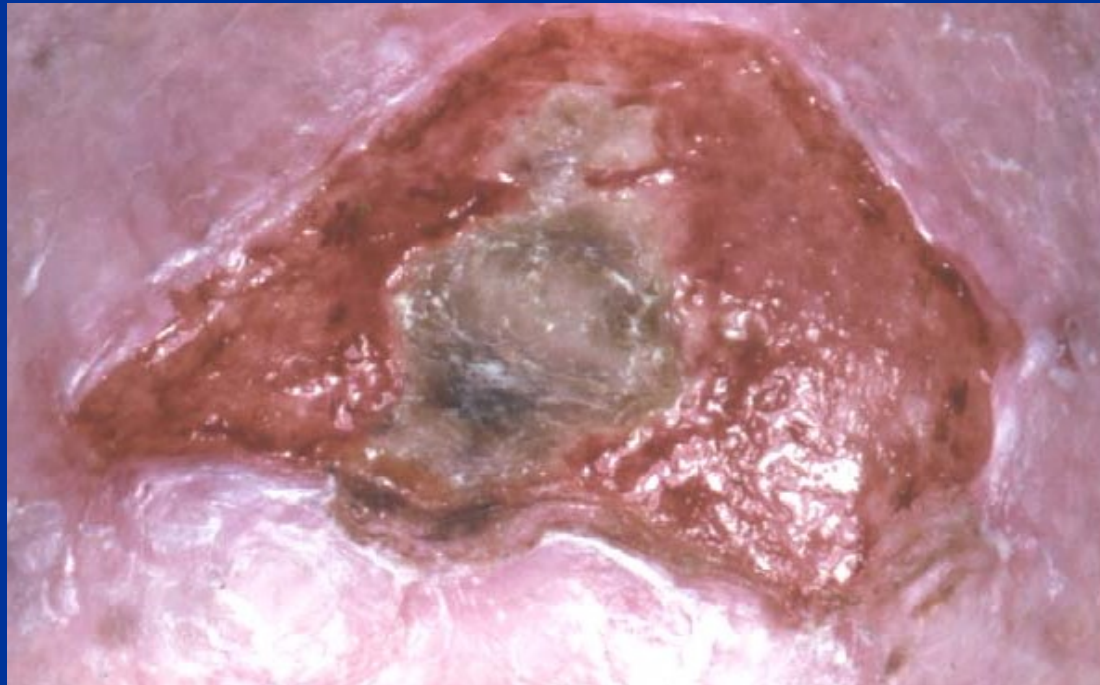
# Erosion

- Raw area due to break in skin involving epidermis only.



# Ulcer

- Loss of an epithelial surface
- In case of skin: Raw area due to loss of both epidermis & dermis.



# Scar

- Fibrous tissue replacement of normal skin





# Lichenification

- Leather like thick skin, prominent markings, usually dark



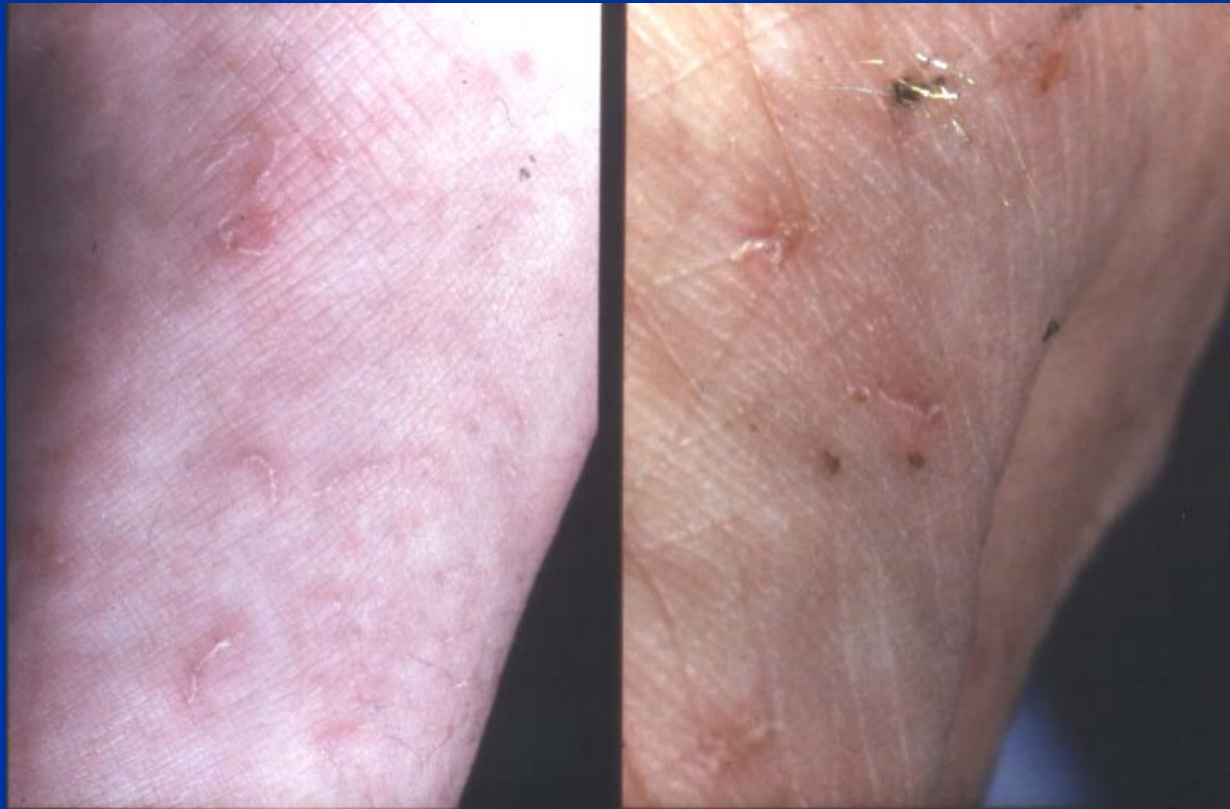
# Erythema

- Redness due to dilatation of blood vessels



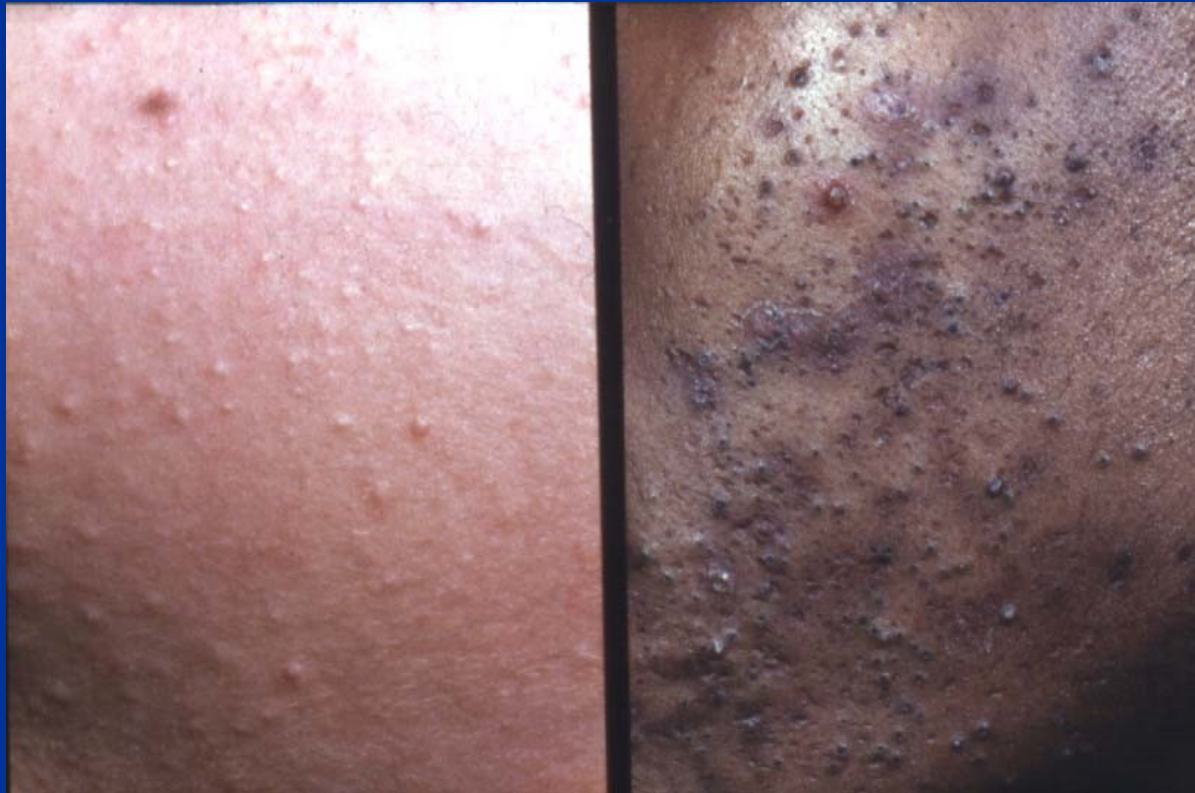
# Burrow

- Greyish-white linear, C or S-shaped scales formed by the female mite.



# Comedone

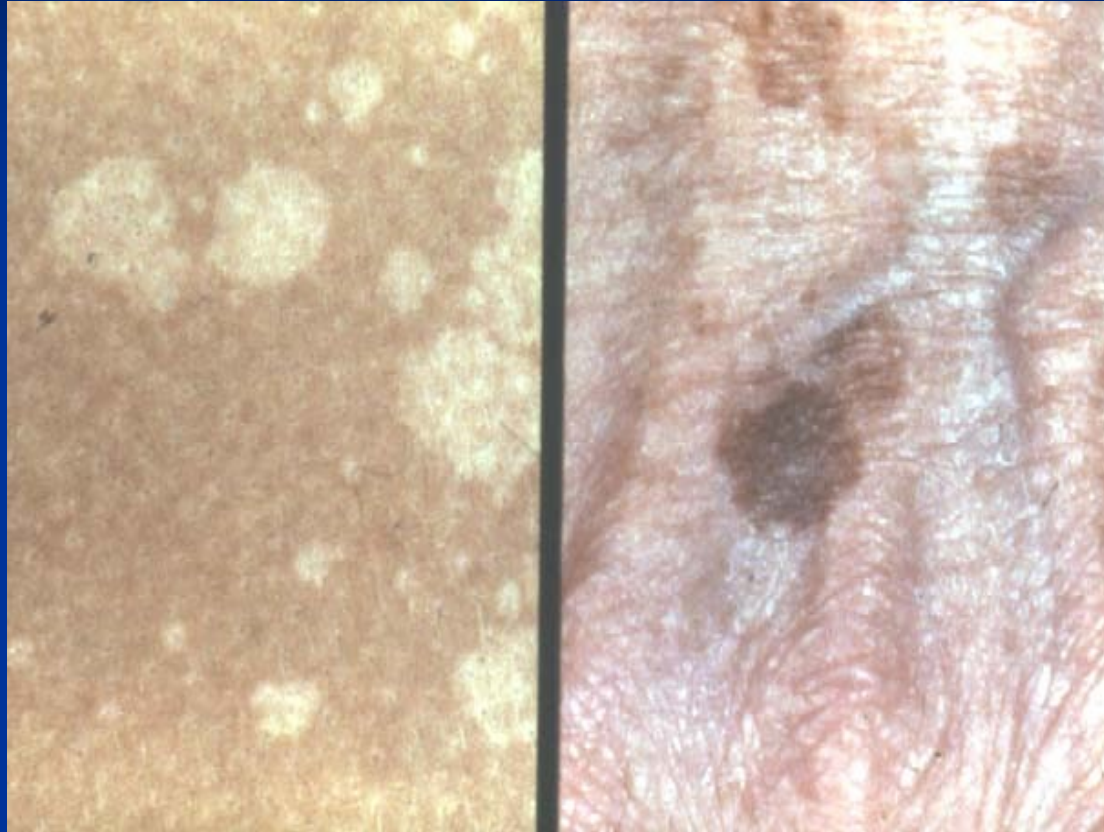
- Keratin plug blocking the mouth of the hair follicle.



# Weal

- Swelling due to oedema of the dermis







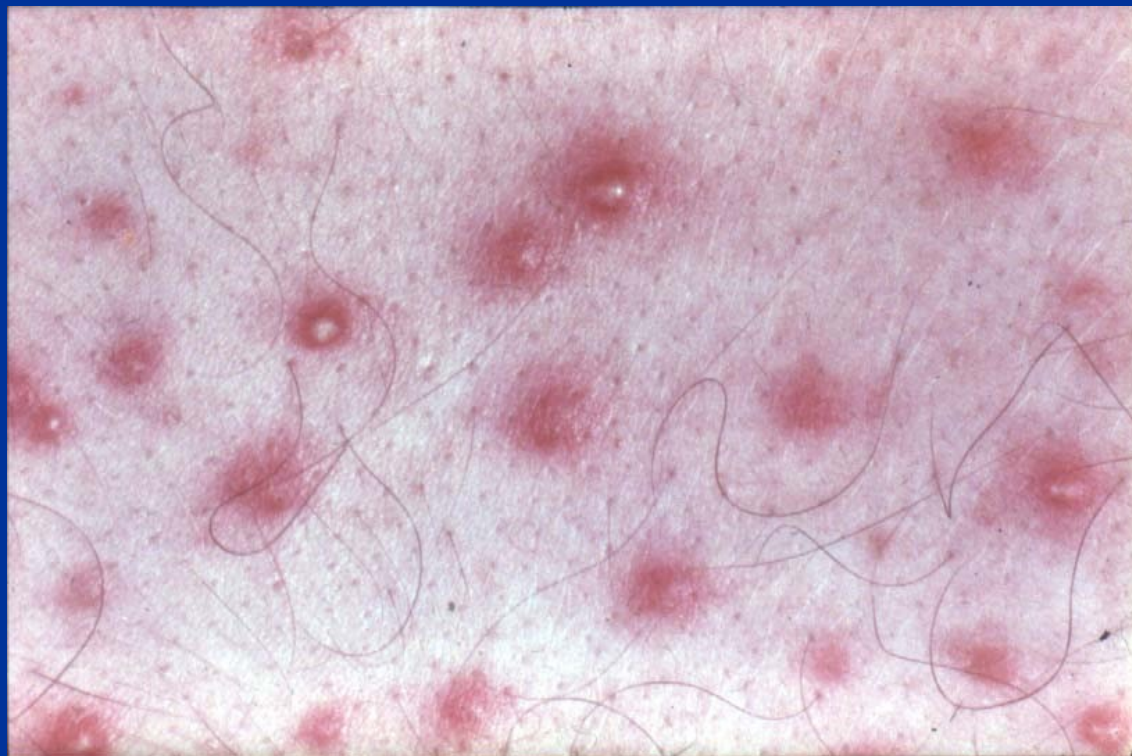


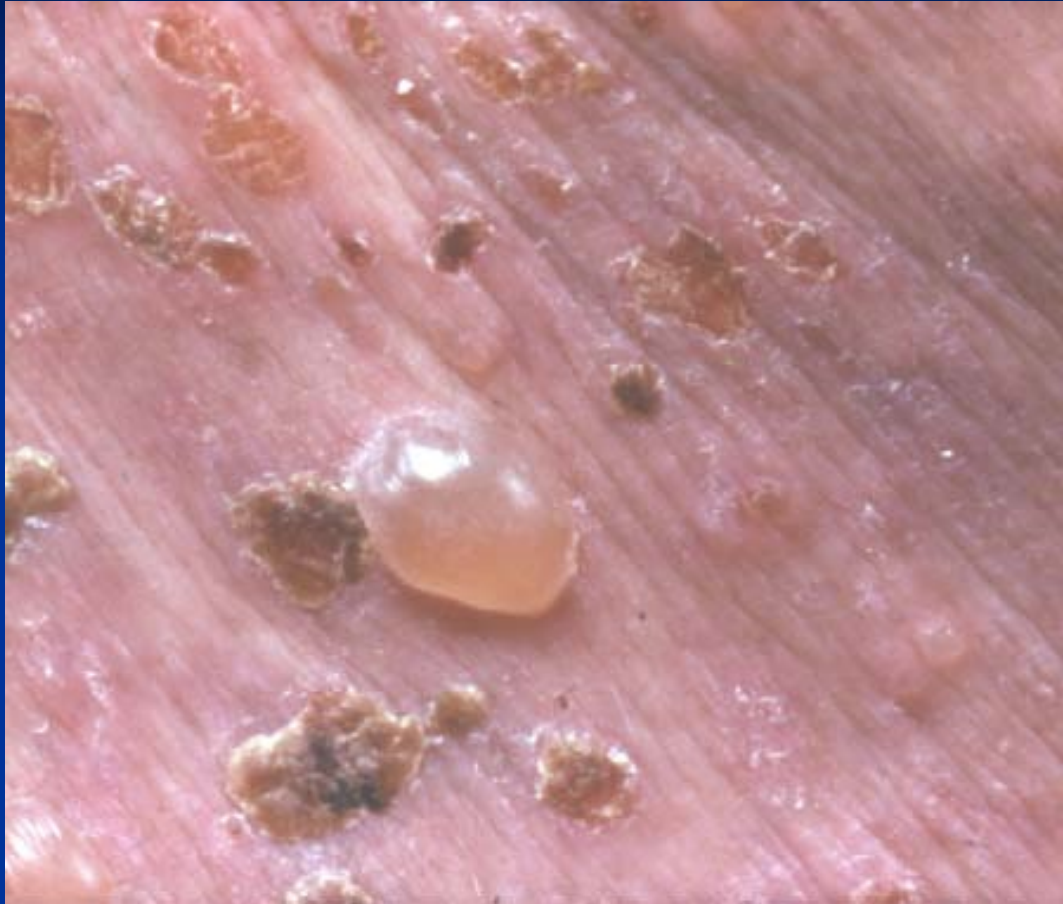




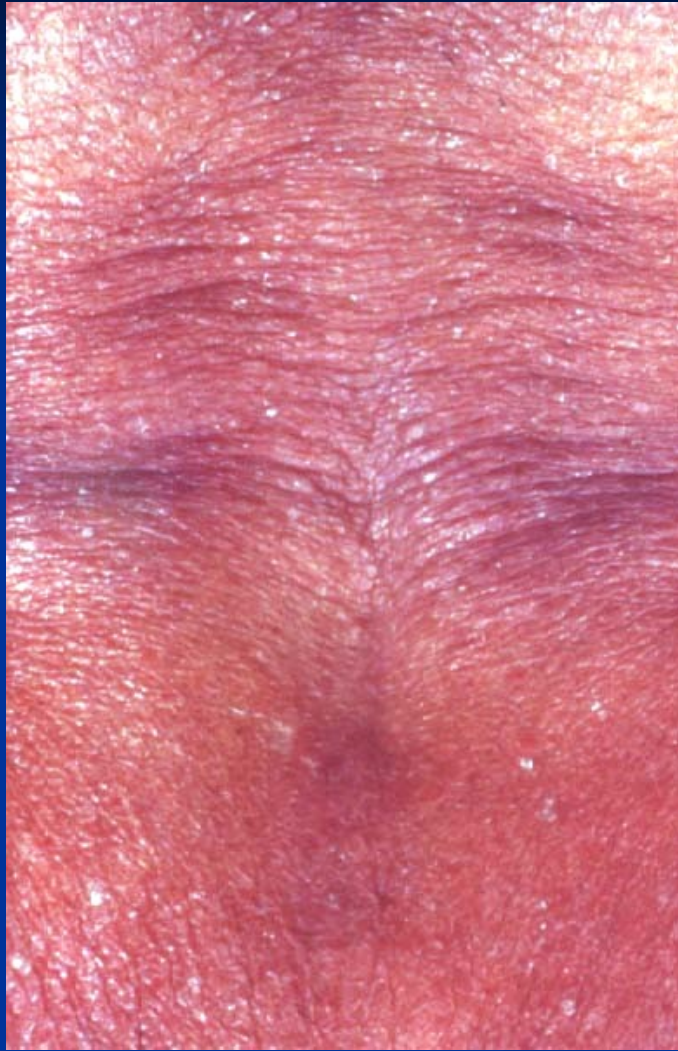








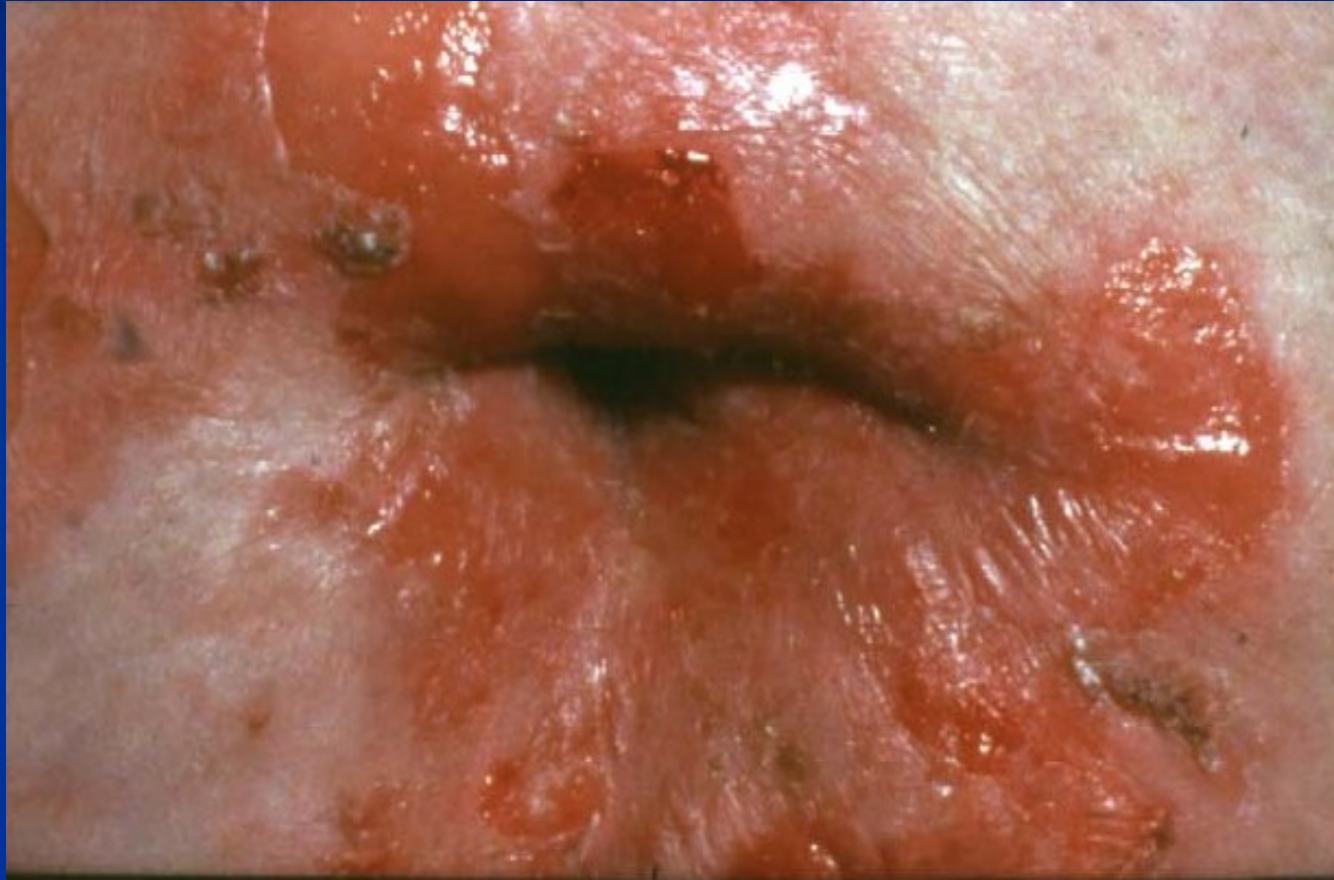








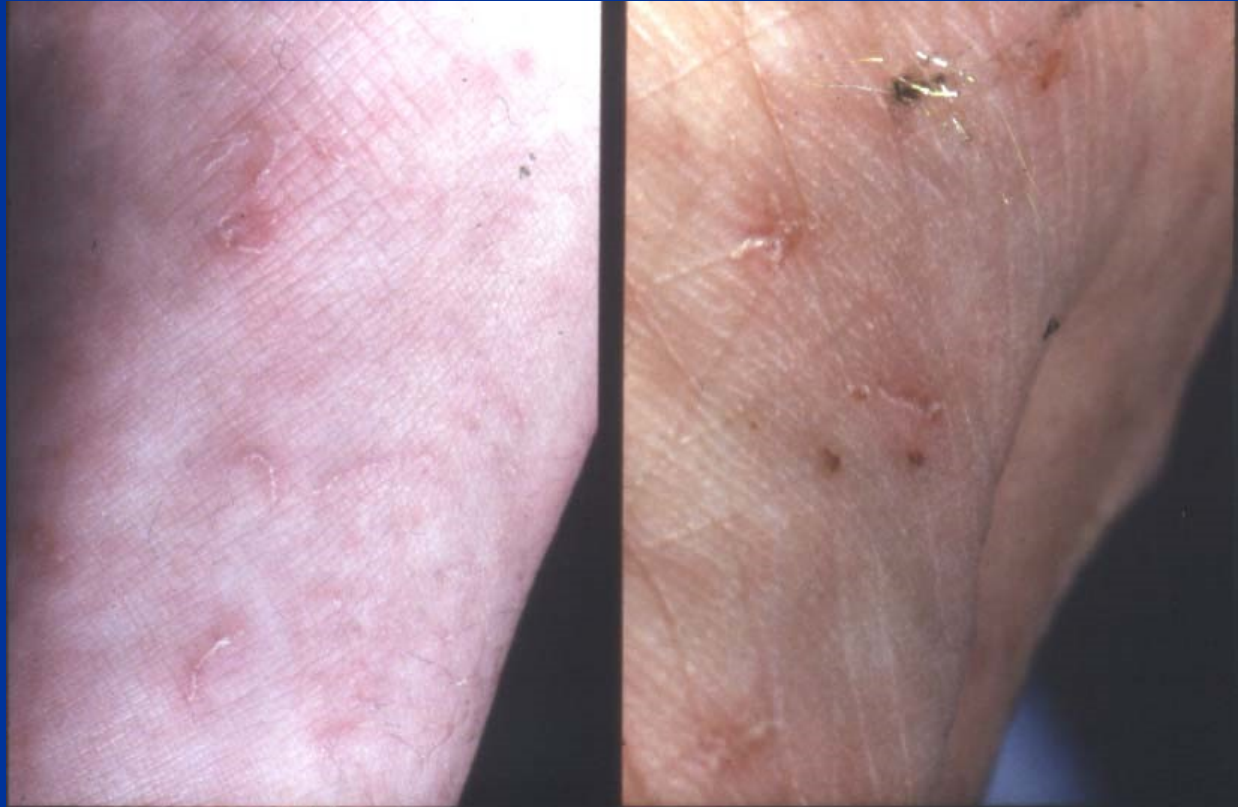


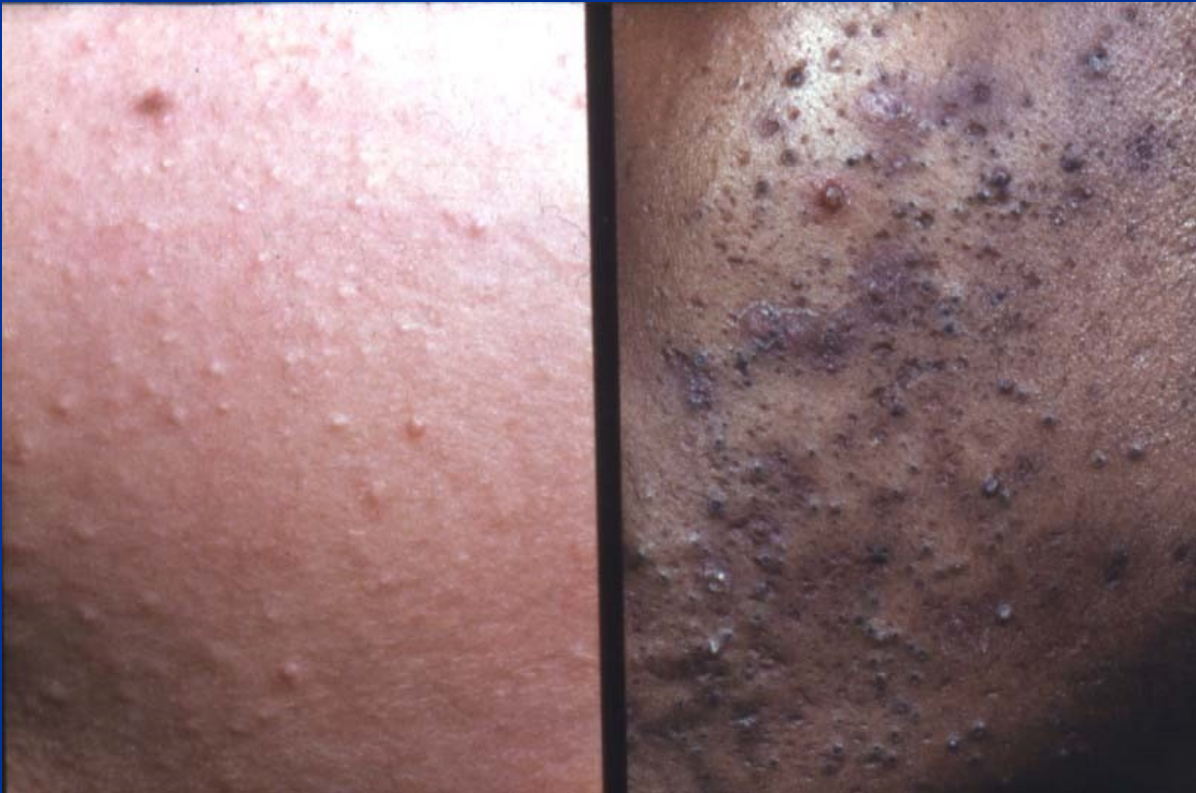


















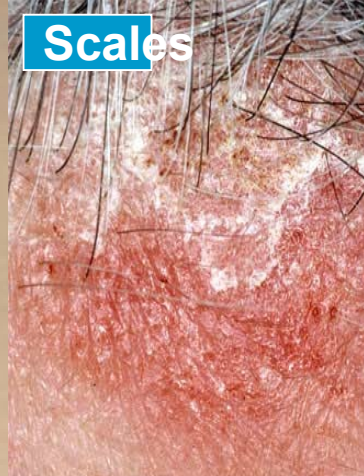
**Macule**



**Plaque**



**Bulla**



**Scales**



**Papule**



**Pustule**



**Petechiae**



**Nodule**



**Vesicle**



**Purpura**





